



Single Family



6971 SQFT



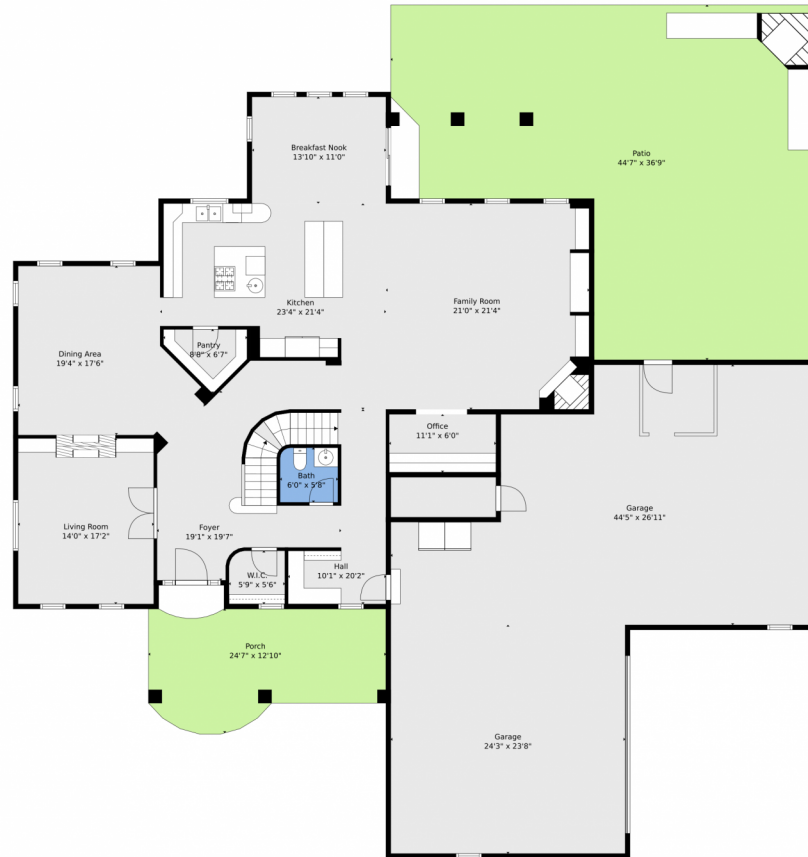
**The Bernardi Group**  
720-438-5680  
bjones@thebernardigroup.com  
<http://www.thebernardigroup.com>



Scan code  
for more  
property  
details



# 8712 Portico Lane, Longmont, CO 80503 – Main



**TOTAL: 5906 sq. ft**

BELOW GRADE: 1509 sq. ft, 1st floor: 2180 sq. ft, 2nd floor: 2217 sq. ft  
EXCLUDED AREAS: STORAGE: 328 sq. ft, PORCH: 285 sq. ft, PATIO: 1285 sq. ft,  
GARAGE: 1534 sq. ft, BALCONY: 123 sq. ft, OPEN TO BELOW: 198 sq. ft,  
UNDEFINED: 10 sq. ft, WALLS: 442 sq. ft

Floor Plan Created By V1photos.com. Measurements Deamed Highly Reliable But Not Guaranteed.



Disclaimer: Sizes and Dimensions are Approximate, Actual May Vary.



**The Bernardi Group**  
720-438-5680  
bjones@thebernardigroup.com  
<http://www.thebernardigroup.com>



# 8712 Portico Lane, Longmont, CO 80503 – 2nd Level



**TOTAL: 5906 sq. ft**

BELOW GRADE: 1509 sq. ft, 1st floor: 2180 sq. ft, 2nd floor: 2217 sq. ft  
EXCLUDED AREAS: STORAGE: 328 sq. ft, PORCH: 285 sq. ft, PATIO: 1285 sq. ft,  
GARAGE: 1534 sq. ft, BALCONY: 123 sq. ft, OPEN TO BELOW: 198 sq. ft,  
UNDEFINED: 10 sq. ft, WALLS: 442 sq. ft

Floor Plan Created By V1photos.com. Measurements Deamed Highly Reliable But Not Guaranteed.



Disclaimer: Sizes and Dimensions are Approximate, Actual May Vary.



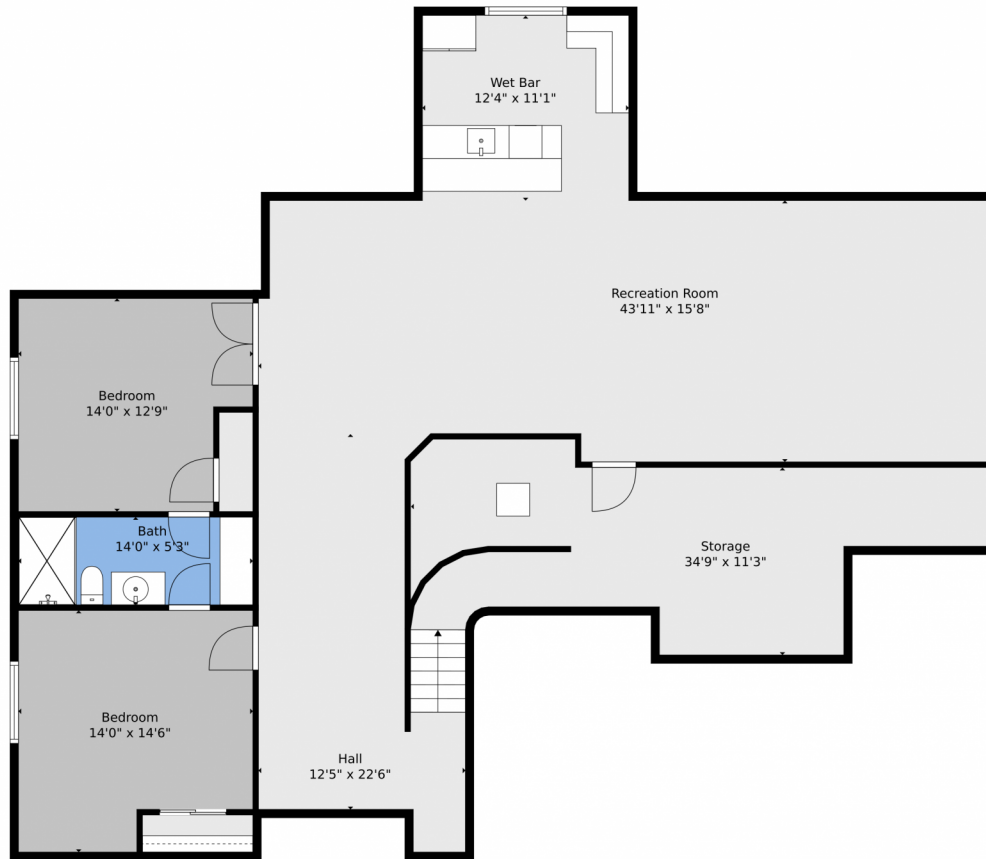
**The Bernardi Group**  
720-438-5680  
bjones@thebernardigroup.com  
<http://www.thebernardigroup.com>



Scan code  
for more  
property  
details



# 8712 Portico Lane, Longmont, CO 80503 – Lower Level



**TOTAL: 5906 sq. ft**

BELOW GRADE: 1509 sq. ft, 1st floor: 2180 sq. ft, 2nd floor: 2217 sq. ft  
EXCLUDED AREAS: STORAGE: 328 sq. ft, PORCH: 285 sq. ft, PATIO: 1285 sq. ft,  
GARAGE: 1534 sq. ft, BALCONY: 123 sq. ft, OPEN TO BELOW: 198 sq. ft,  
UNDEFINED: 10 sq. ft, WALLS: 442 sq. ft

Floor Plan Created By V1photos.com. Measurements Deamed Highly Reliable But Not Guaranteed.



Disclaimer: Sizes and Dimensions are Approximate, Actual May Vary.



**The Bernardi Group**

720-438-5680

[bjones@thebernardigroup.com](mailto:bjones@thebernardigroup.com)

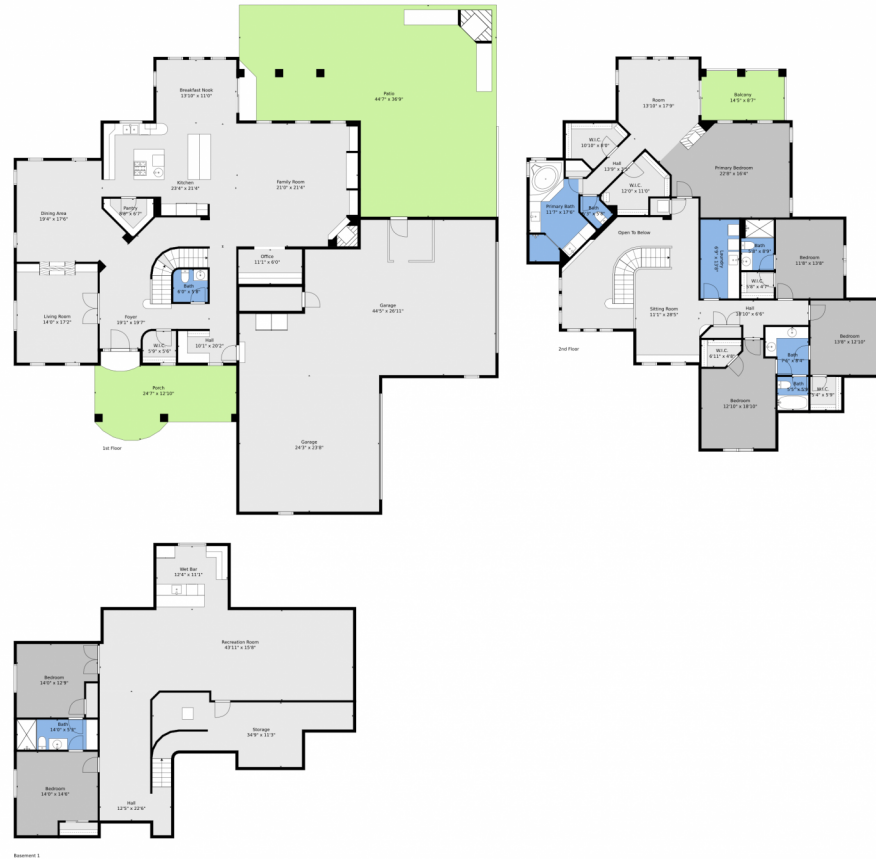
<http://www.thebernardigroup.com>



Scan code  
for more  
property  
details



# 8712 Portico Lane, Longmont, CO 80503 – All Levels



**TOTAL: 5906 sq. ft**  
BELOW GRADE: 1509 sq. ft, 1st floor: 2180 sq. ft, 2nd floor: 2217 sq. ft  
EXCLUDED AREAS: STORAGE: 328 sq. ft, PORCH: 285 sq. ft, PATIO: 1285 sq. ft,  
GARAGE: 1534 sq. ft, BALCONY: 123 sq. ft, OPEN TO BELOW: 198 sq. ft,  
UNDEFINED: 10 sq. ft, WALLS: 442 sq. ft

Floor Plan Created By V1photos.com. Measurements Deamed Highly Reliable But Not Guaranteed.



Disclaimer: Sizes and Dimensions are Approximate, Actual May Vary.



**The Bernardi Group**  
720-438-5680  
bjones@thebernardigroup.com  
<http://www.thebernardigroup.com>



Scan code  
for more  
property  
details

