

Single Family



1280 SQFT



3 Beds



2 Baths



2 Car



0.09 Acre



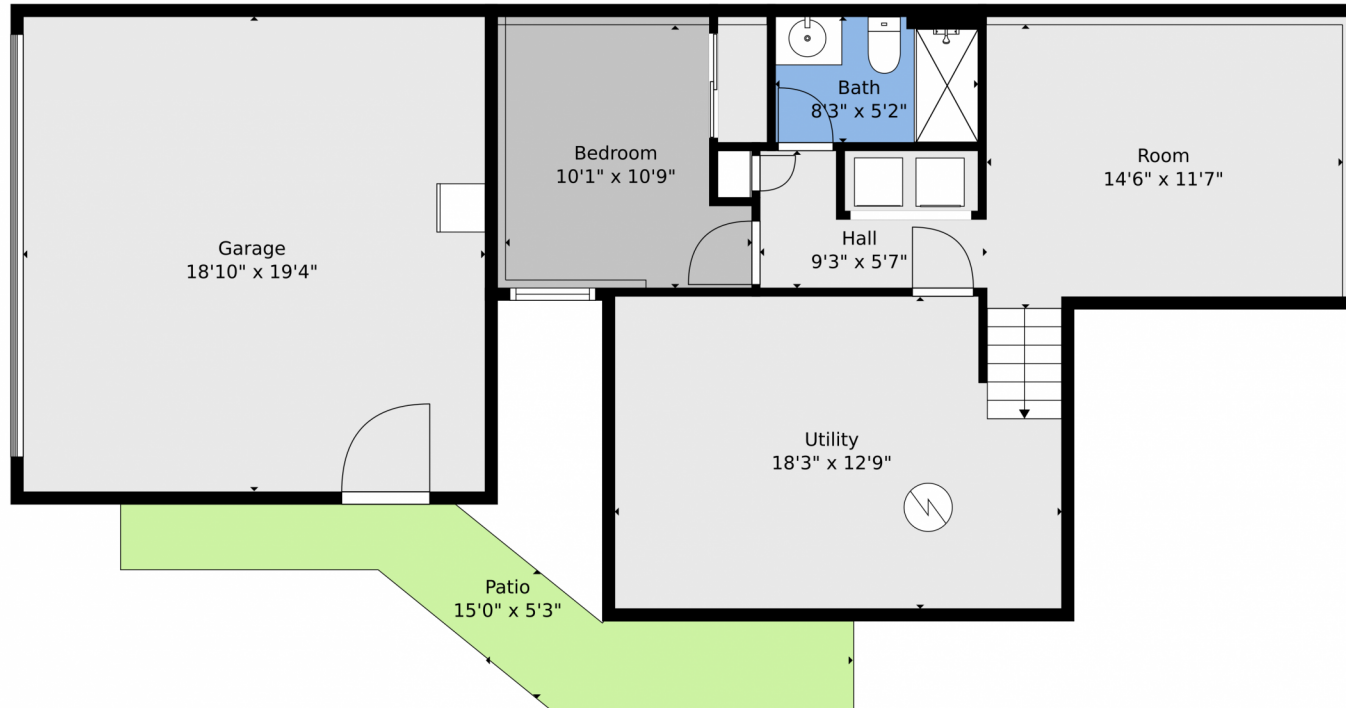
Beth Smart
303-549-6907
beth@bethsmart.com



Scan code
for more
property
details



523 East Chiswick Circle, Highlands Ranch, CO 80126 — Lower Level



TOTAL: 1178 sq. ft
1st floor: 398 sq. ft, 2nd floor: 367 sq. ft, 3rd floor: 413 sq. ft
EXCLUDED AREAS: GARAGE: 366 sq. ft, PATIO: 108 sq. ft, UTILITY: 231 sq. ft,
PORCH: 61 sq. ft, WALLS: 183 sq. ft

Floor Plan Created By V1photos.com. Measurements Deamed Highly Reliable But Not Guaranteed.

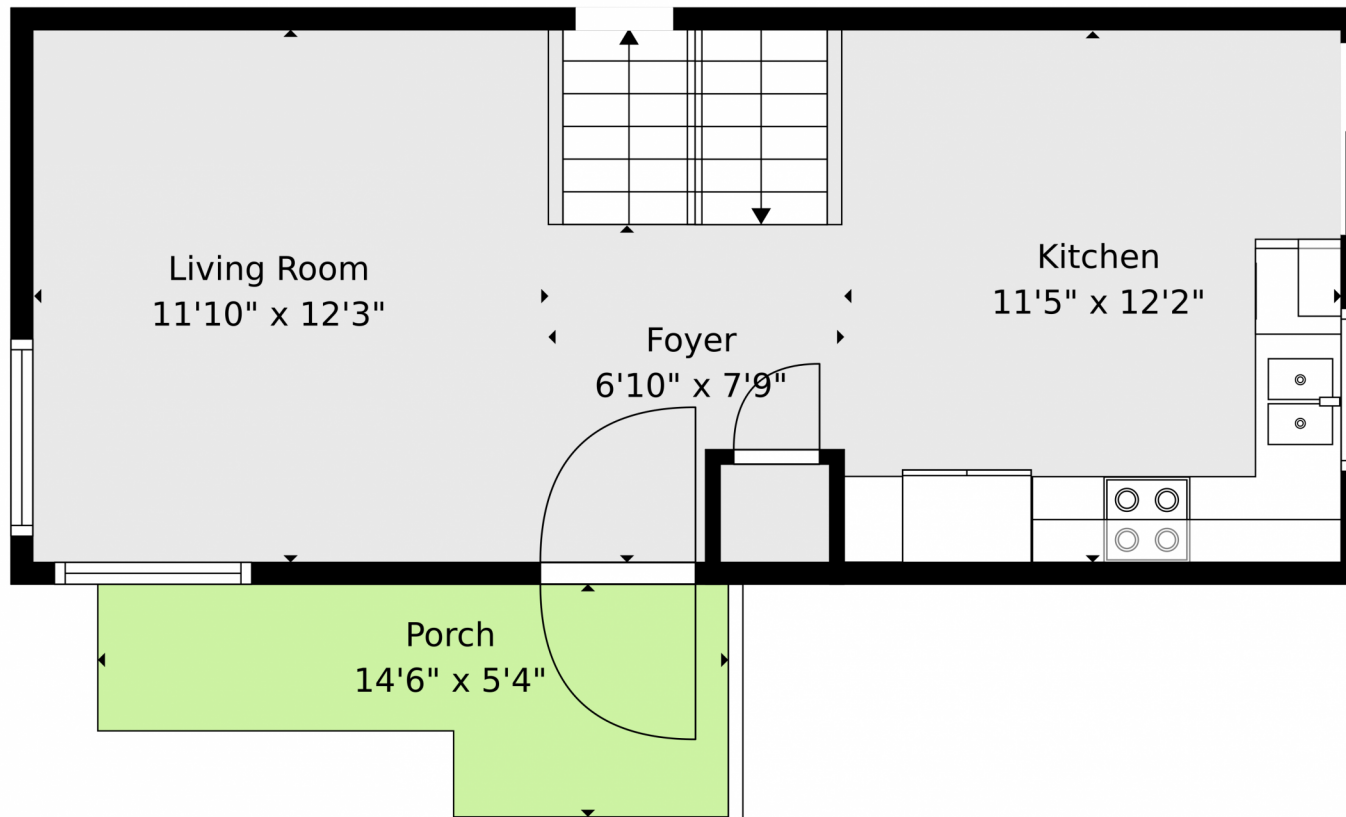


Disclaimer: Sizes and Dimensions are Approximate, Actual May Vary.



Beth Smart
303-549-6907
beth@bethsmart.com





TOTAL: 1178 sq. ft
1st floor: 398 sq. ft, 2nd floor: 367 sq. ft, 3rd floor: 413 sq. ft
EXCLUDED AREAS: GARAGE: 366 sq. ft, PATIO: 108 sq. ft, UTILITY: 231 sq. ft,
PORCH: 61 sq. ft, WALLS: 183 sq. ft

Floor Plan Created By V1photos.com. Measurements Deamed Highly Reliable But Not Guaranteed.



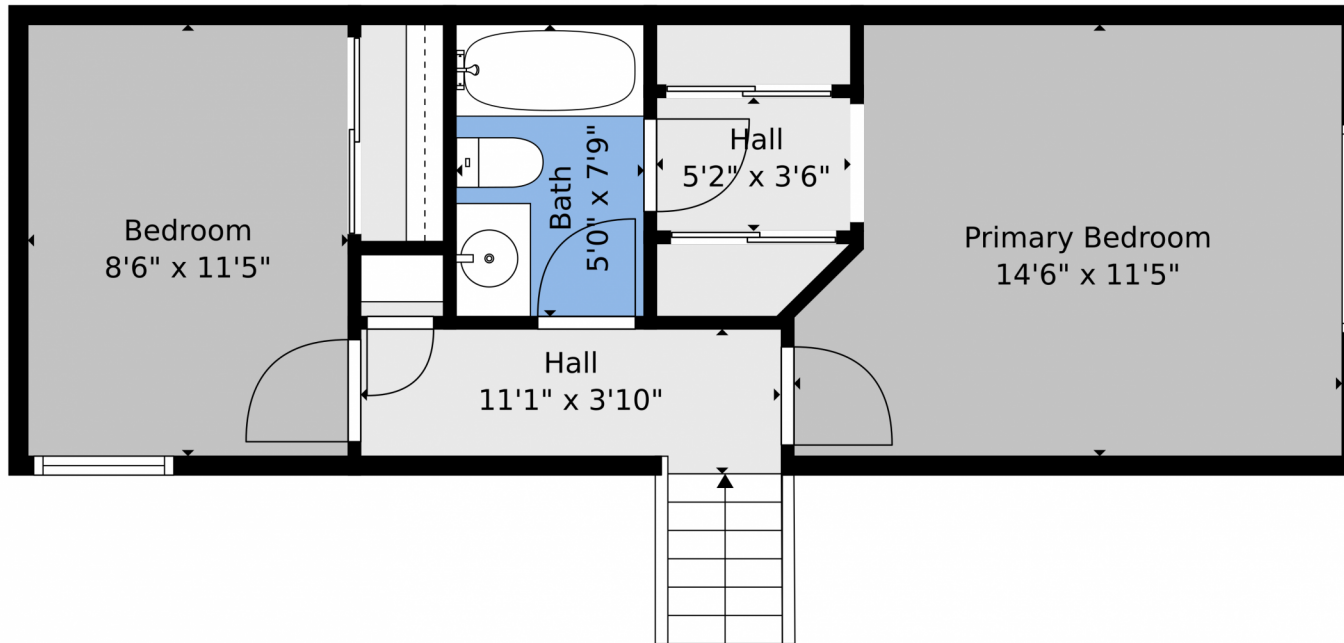
Disclaimer: Sizes and Dimensions are Approximate, Actual May Vary.



Beth Smart
303-549-6907
beth@bethsmart.com



523 East Chiswick Circle, Highlands Ranch, CO 80126 — 2nd Level



TOTAL: 1178 sq. ft
1st floor: 398 sq. ft, 2nd floor: 367 sq. ft, 3rd floor: 413 sq. ft
EXCLUDED AREAS: GARAGE: 366 sq. ft, PATIO: 108 sq. ft, UTILITY: 231 sq. ft,
PORCH: 61 sq. ft, WALLS: 183 sq. ft

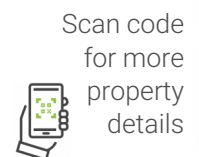
Floor Plan Created By V1photos.com. Measurements Deamed Highly Reliable But Not Guaranteed.



Disclaimer: Sizes and Dimensions are Approximate, Actual May Vary.



Beth Smart
303-549-6907
beth@bethsmart.com



Scan code
for more
property
details



523 East Chiswick Circle, Highlands Ranch, CO 80126 — All Levels



TOTAL: 1178 sq. ft
1st floor: 398 sq. ft, 2nd floor: 367 sq. ft, 3rd floor: 413 sq. ft
EXCLUDED AREAS: GARAGE: 366 sq. ft, PATIO: 108 sq. ft, UTILITY: 231 sq. ft,
PORCH: 61 sq. ft, WALLS: 183 sq. ft

Floor Plan Created By V1photos.com, Measurements Deamed Highly Reliable But Not Guaranteed.



Disclaimer: Sizes and Dimensions are Approximate, Actual May Vary.



Beth Smart
303-549-6907
beth@bethsmart.com

