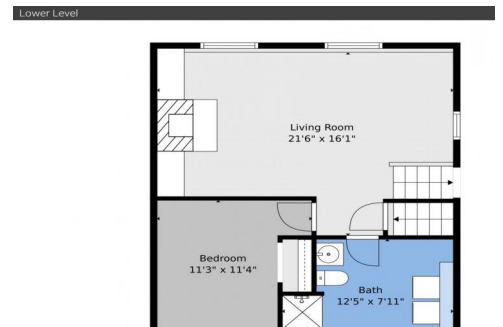




6552 South Dover Street
Littleton, CO 80123

MLS # 6800037



Single Family



2058 SQFT



Danielle Marcus

303-669-7974

danielle@themarcusteam.com

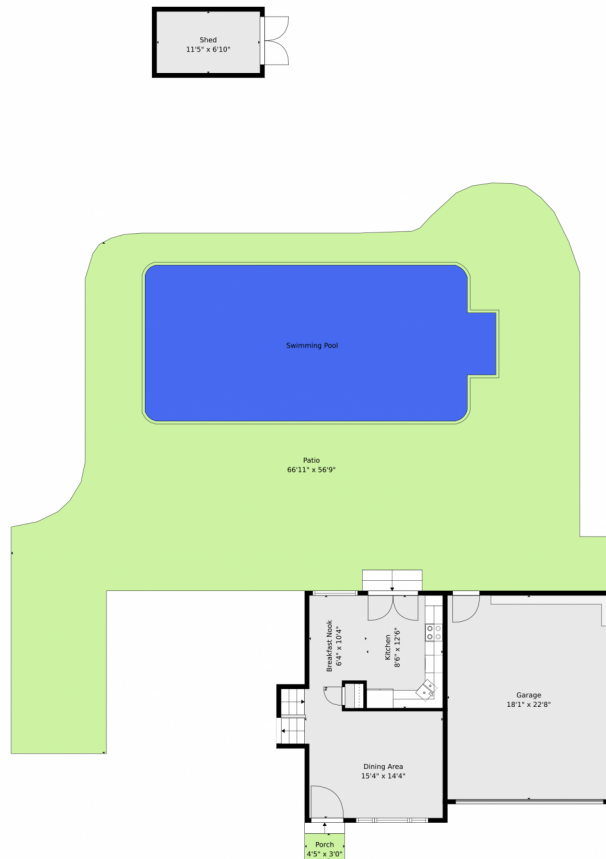
<https://www.themarcusteam.com>



Scan code
for more
property
details



6552 South Dover Street, Littleton, CO 80123 — Main Level



TOTAL: 1830 sq. ft

Basement 1: 340 sq. ft, 1st floor: 530 sq. ft, 2nd floor: 385 sq. ft, 3rd floor: 575 sq. ft
EXCLUDED AREAS: UTILITY: 38 sq. ft, GARAGE: 409 sq. ft, SHED: 79 sq. ft,
PORCH: 19 sq. ft, PATIO: 1882 sq. ft, WALLS: 234 sq. ft

Floor Plan Created By V1photos.com. Measurements Deamed Highly Reliable But Not Guaranteed.

Disclaimer: Sizes and Dimensions are Approximate, Actual May Vary.



Danielle Marcus

303-669-7974

danielle@themarkusteam.com

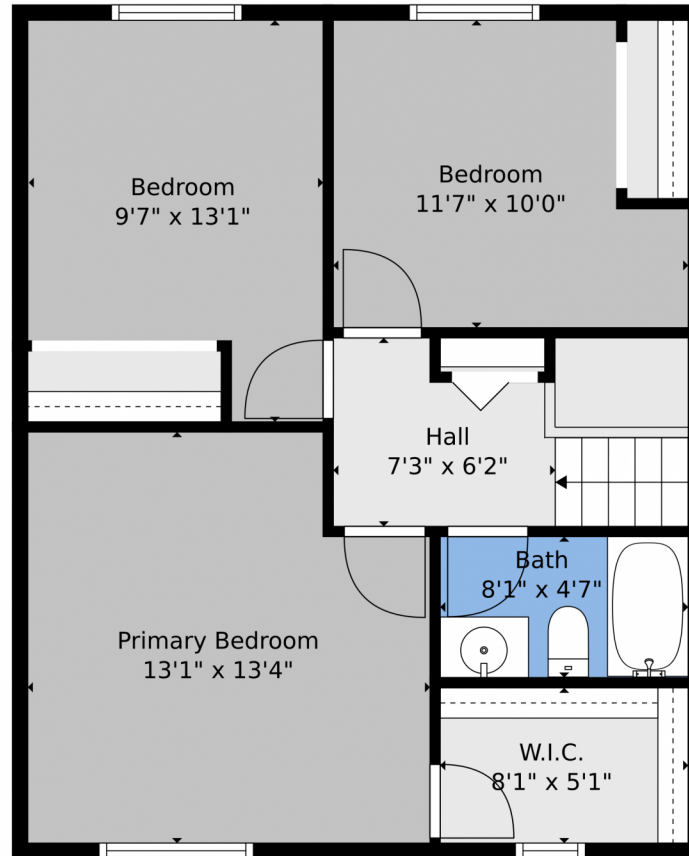
<https://www.themarkusteam.com>



Scan code
for more
property
details



6552 South Dover Street, Littleton, CO 80123 — Upper Level



TOTAL: 1830 sq. ft

Basement 1: 340 sq. ft, 1st floor: 530 sq. ft, 2nd floor: 385 sq. ft, 3rd floor: 575 sq. ft
EXCLUDED AREAS: UTILITY: 38 sq. ft, GARAGE: 409 sq. ft, SHED: 79 sq. ft,
PORCH: 19 sq. ft, PATIO: 1882 sq. ft, WALLS: 234 sq. ft

Floor Plan Created By V1photos.com. Measurements Deamed Highly Reliable But Not Guaranteed.



Disclaimer: Sizes and Dimensions are Approximate, Actual May Vary.



Danielle Marcus

303-669-7974

danielle@themarkusteam.com

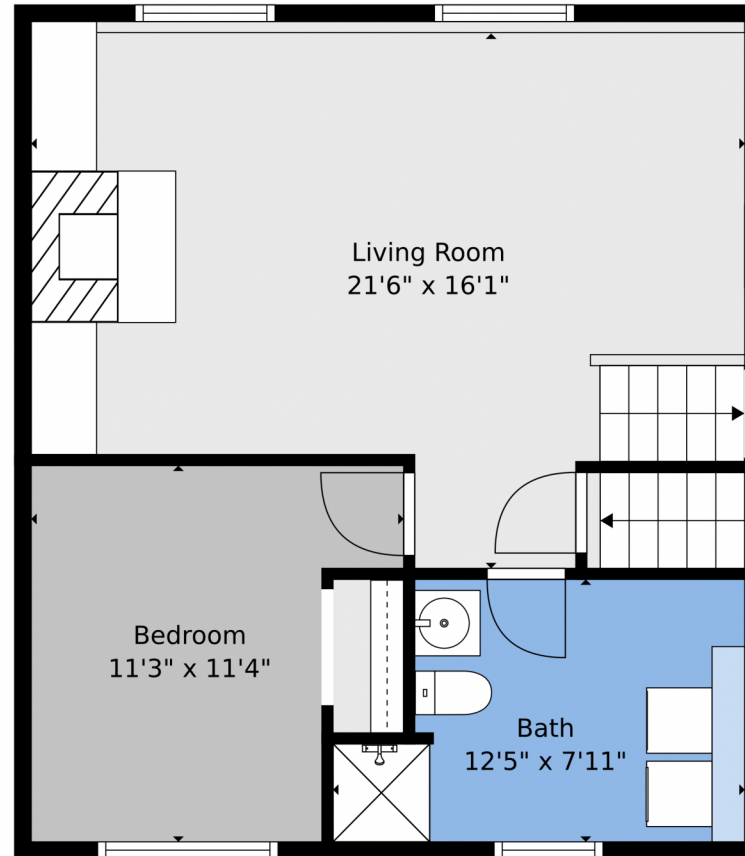
<https://www.themarkusteam.com>



Scan code
for more
property
details



6552 South Dover Street, Littleton, CO 80123 — Lower Level



TOTAL: 1830 sq. ft

Basement 1: 340 sq. ft, 1st floor: 530 sq. ft, 2nd floor: 385 sq. ft, 3rd floor: 575 sq. ft
EXCLUDED AREAS: UTILITY: 38 sq. ft, GARAGE: 409 sq. ft, SHED: 79 sq. ft,
PORCH: 19 sq. ft, PATIO: 1882 sq. ft, WALLS: 234 sq. ft

Floor Plan Created By V1photos.com. Measurements Deamed Highly Reliable But Not Guaranteed.



Disclaimer: Sizes and Dimensions are Approximate, Actual May Vary.



Danielle Marcus

303-669-7974

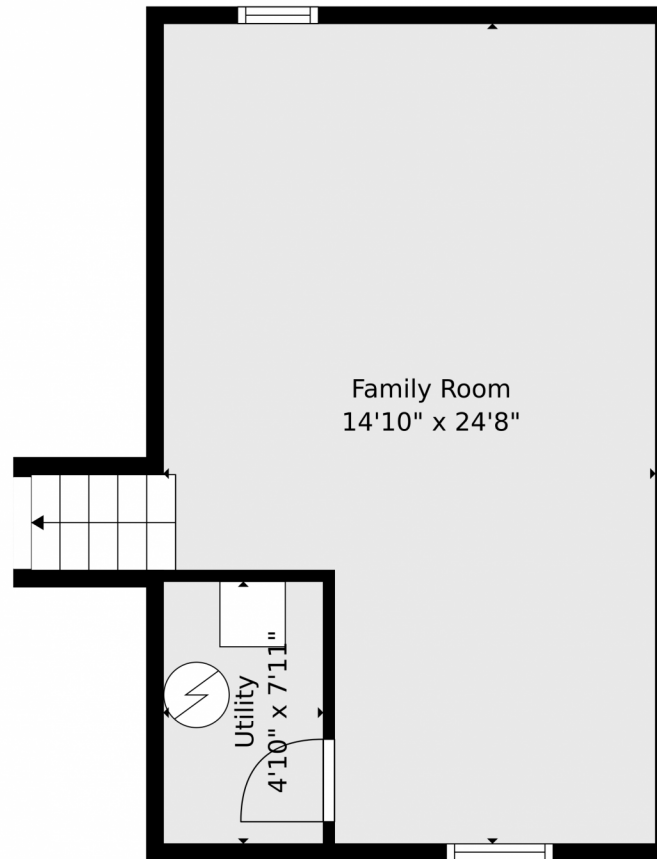
danielle@themarkusteam.com

<https://www.themarkusteam.com>



Scan code
for more
property
details





TOTAL: 1830 sq. ft

Basement 1: 340 sq. ft, 1st floor: 530 sq. ft, 2nd floor: 385 sq. ft, 3rd floor: 575 sq. ft
EXCLUDED AREAS: UTILITY: 38 sq. ft, GARAGE: 409 sq. ft, SHED: 79 sq. ft,
PORCH: 19 sq. ft, PATIO: 1882 sq. ft, WALLS: 234 sq. ft

Floor Plan Created By V1photos.com. Measurements Deamed Highly Reliable But Not Guaranteed.



Disclaimer: Sizes and Dimensions are Approximate, Actual May Vary.



Danielle Marcus

303-669-7974

danielle@themarkusteam.com

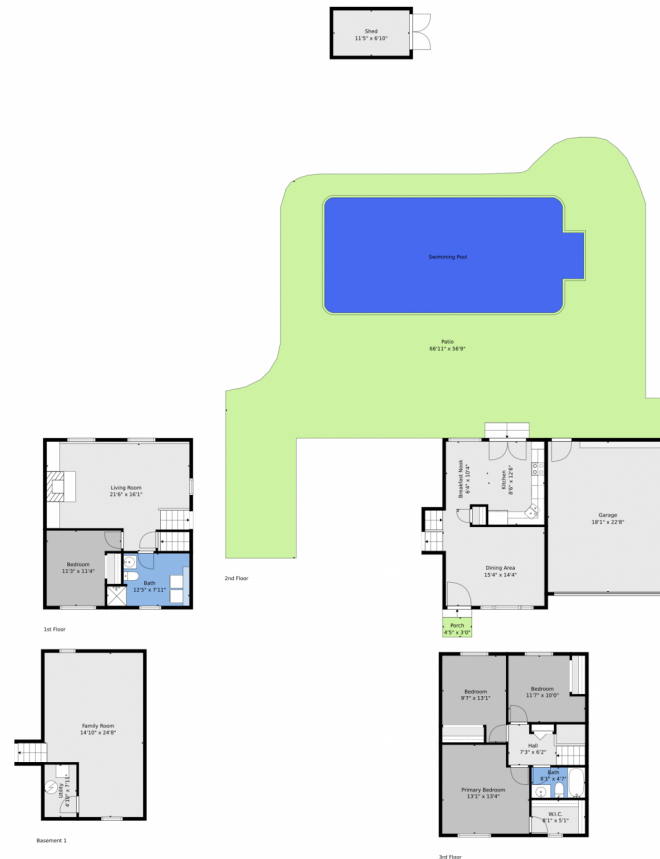
<https://www.themarkusteam.com>



Scan code
for more
property
details



6552 South Dover Street, Littleton, CO 80123 — All Levels



Basement 1: 340 sq. ft, 1st floor: 530 sq. ft, 2nd floor: 385 sq. ft, 3rd floor: 575 sq. ft
EXCLUDED AREAS: UTILITY: 38 sq. ft, GARAGE: 409 sq. ft, SHED: 79 sq. ft,
PORCH: 19 sq. ft, PATIO: 1882 sq. ft, WALLS: 234 sq. ft

Floor Plan Created By V1photos.com, Measurements Deamed Highly Reliable But Not Guaranteed

Disclaimer: Sizes and Dimensions are Approximate, Actual May Vary.



Danielle Marcus
303-669-7974
danielle@themarkusteam.com
<https://www.themarkusteam.com>



Scan code
for more
property
details

