



12 Baylor Drive
Longmont, CO 80503
COMMUNITY: Longmont Estates



Single Family



2772 SQFT



4 Beds



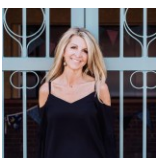
3 Baths



2 Car



0.21 Acre



Christy Hepp
303-910-5393
cnishi1068@msn.com
<https://christysellscolorado.com>



Scan code
for more
property
details



12 Baylor Drive, Longmont, CO 80503 — Main



TOTAL: 2446 sq. ft

1st floor: 641 sq. ft, 2nd floor: 1042 sq. ft, 3rd floor: 763 sq. ft
EXCLUDED AREAS: UNDEFINED: 48 sq. ft, PATIO: 373 sq. ft, DECK: 356 sq. ft,
PORCH: 104 sq. ft, GARAGE: 496 sq. ft, FIREPLACE: 6 sq. ft,
WALLS: 225 sq. ft

Floor Plan Created By V1photos.com, Measurements Deamed Highly Reliable But Not Guaranteed.



Disclaimer: Sizes and Dimensions are Approximate, Actual May Vary.



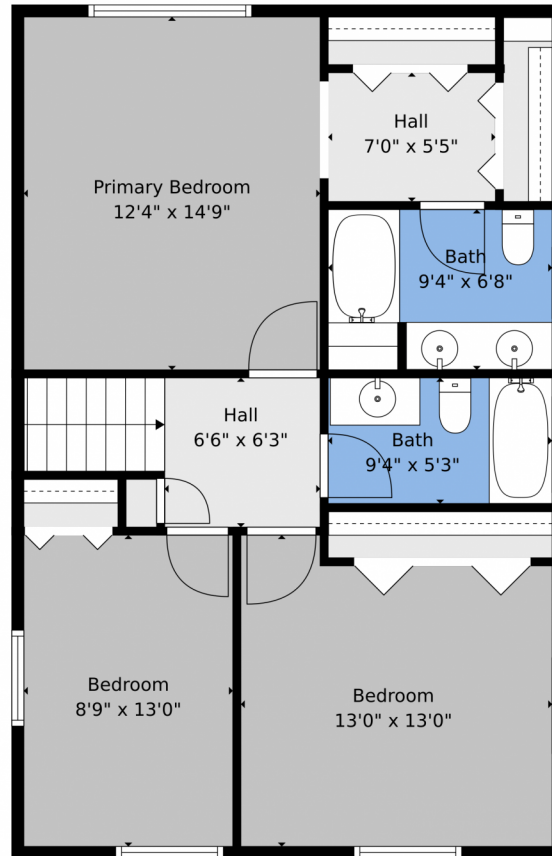
Christy Hepp
303-910-5393
cnishi1068@msn.com
<https://christysellscolorado.com>



Scan code
for more
property
details



12 Baylor Drive, Longmont, CO 80503 — 2nd Level



TOTAL: 2446 sq. ft

1st floor: 641 sq. ft, 2nd floor: 1042 sq. ft, 3rd floor: 763 sq. ft
EXCLUDED AREAS: UNDEFINED: 48 sq. ft, PATIO: 373 sq. ft, DECK: 356 sq. ft,
PORCH: 104 sq. ft, GARAGE: 496 sq. ft, FIREPLACE: 6 sq. ft,
WALLS: 225 sq. ft

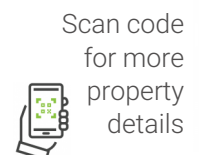
Floor Plan Created By V1photos.com, Measurements Deamed Highly Reliable But Not Guaranteed.



Disclaimer: Sizes and Dimensions are Approximate, Actual May Vary.



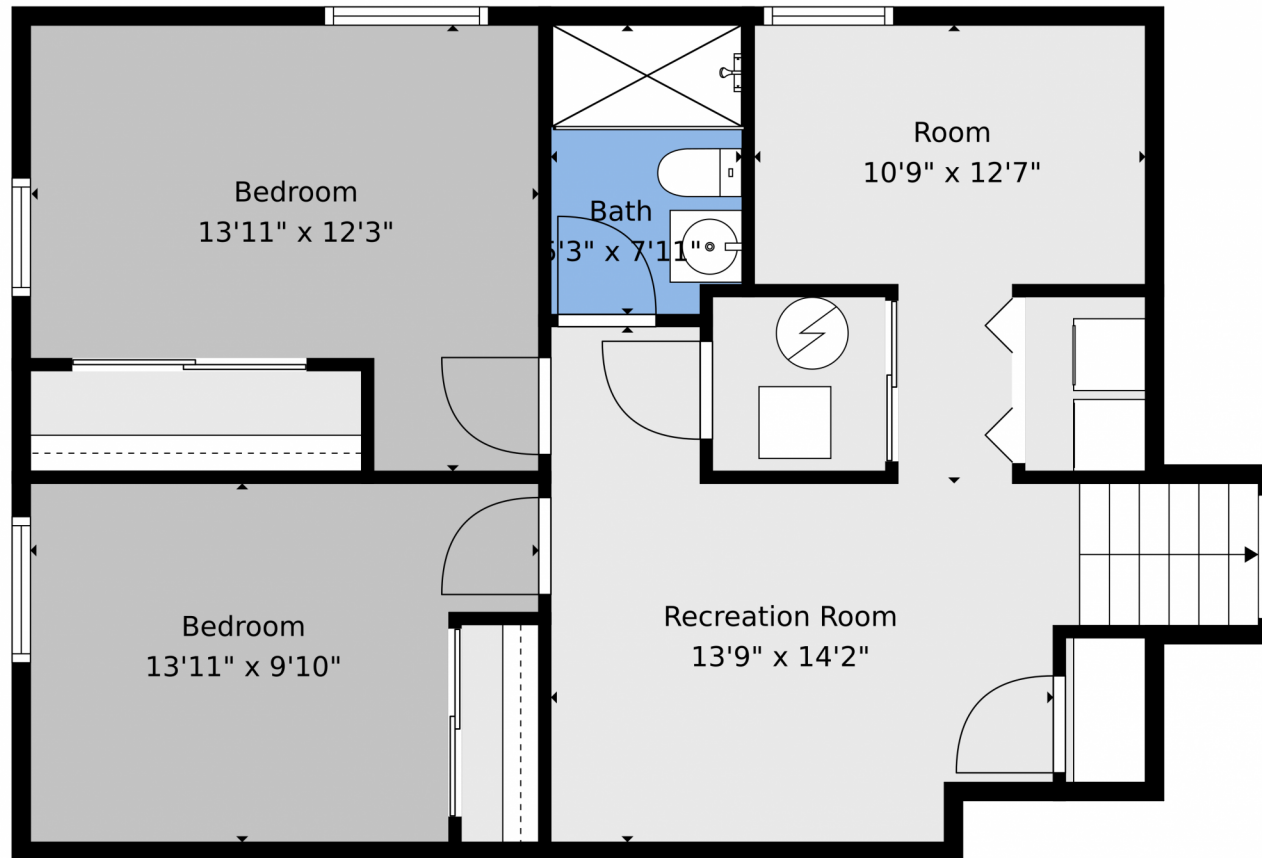
Christy Hepp
303-910-5393
cnishi1068@msn.com
<https://christysellscolorado.com>



Scan code
for more
property
details



12 Baylor Drive, Longmont, CO 80503 — Basement



TOTAL: 2446 sq. ft

1st floor: 641 sq. ft, 2nd floor: 1042 sq. ft, 3rd floor: 763 sq. ft
EXCLUDED AREAS: UNDEFINED: 48 sq. ft, PATIO: 373 sq. ft, DECK: 356 sq. ft,
PORCH: 104 sq. ft, GARAGE: 496 sq. ft, FIREPLACE: 6 sq. ft,
WALLS: 225 sq. ft

Floor Plan Created By V1photos.com, Measurements Deamed Highly Reliable But Not Guaranteed.

Disclaimer: Sizes and Dimensions are Approximate, Actual May Vary.



Christy Hepp
303-910-5393
cnishi1068@msn.com
<https://christysellscolorado.com>



Scan code
for more
property
details



12 Baylor Drive, Longmont, CO 80503 — All Levels



TOTAL: 2446 sq. ft
1st floor: 641 sq. ft, 2nd floor: 1042 sq. ft, 3rd floor: 763 sq. ft
EXCLUDED AREAS: UNDEFINED: 48 sq. ft, PATIO: 373 sq. ft, DECK: 356 sq. ft,
PORCH: 104 sq. ft, GARAGE: 496 sq. ft, FIREPLACE: 6 sq. ft,
WALLS: 225 sq. ft

Floor Plan Created By V1photos.com. Measurements Deamed Highly Reliable But Not Guaranteed.



Disclaimer: Sizes and Dimensions are Approximate, Actual May Vary.



Christy Hepp
303-910-5393
cnishi1068@msn.com
<https://christysellscolorado.com>

