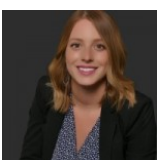


Single Family



4487 SQFT



Lauren Wilson
469-360-0750
laurenkellywilson@gmail.com



8286 Lightening View Drive, Parker, CO 80134 — Main



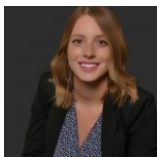
TOTAL: 4385 sq. ft

Basement 1: 1125 sq. ft, 1st floor: 1869 sq. ft, 2nd floor: 1016 sq. ft, 3rd floor: 375 sq. ft
EXCLUDED AREAS: GARAGE: 645 sq. ft, UTILITY: 214 sq. ft, PATIO: 277 sq. ft,
PORCH: 207 sq. ft, DECK: 820 sq. ft, FIREPLACE: 14 sq. ft,
BALCONY: 196 sq. ft, OPEN TO BELOW: 842 sq. ft, LOW CEILING: 18 sq. ft,
WALLS: 354 sq. ft

Floor Plan Created By V1photos.com, Measurements Deamed Highly Reliable But Not Guaranteed.



Disclaimer: Sizes and Dimensions are Approximate, Actual May Vary.



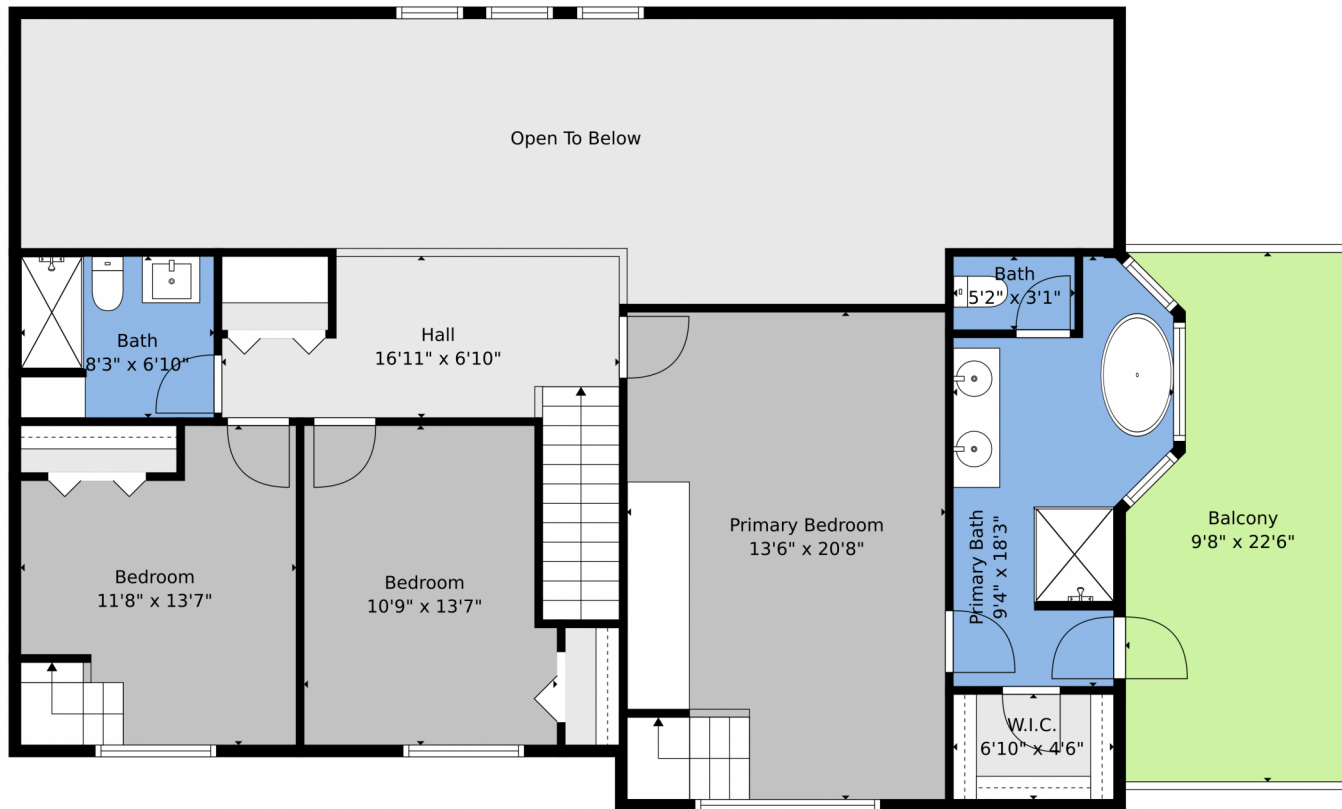
Lauren Wilson
469-360-0750
laurenkellywilson@gmail.com



Scan code
for more
property
details



8286 Lightening View Drive, Parker, CO 80134 — 2nd Level



TOTAL: 4385 sq. ft

Basement 1: 1125 sq. ft, 1st floor: 1869 sq. ft, 2nd floor: 1016 sq. ft, 3rd floor: 375 sq. ft
EXCLUDED AREAS: GARAGE: 645 sq. ft, UTILITY: 214 sq. ft, PATIO: 277 sq. ft,
PORCH: 207 sq. ft, DECK: 820 sq. ft, FIREPLACE: 14 sq. ft,
BALCONY: 196 sq. ft, OPEN TO BELOW: 842 sq. ft, LOW CEILING: 18 sq. ft,
WALLS: 354 sq. ft

Floor Plan Created By V1photos.com. Measurements Deamed Highly Reliable But Not Guaranteed.



Disclaimer: Sizes and Dimensions are Approximate, Actual May Vary.



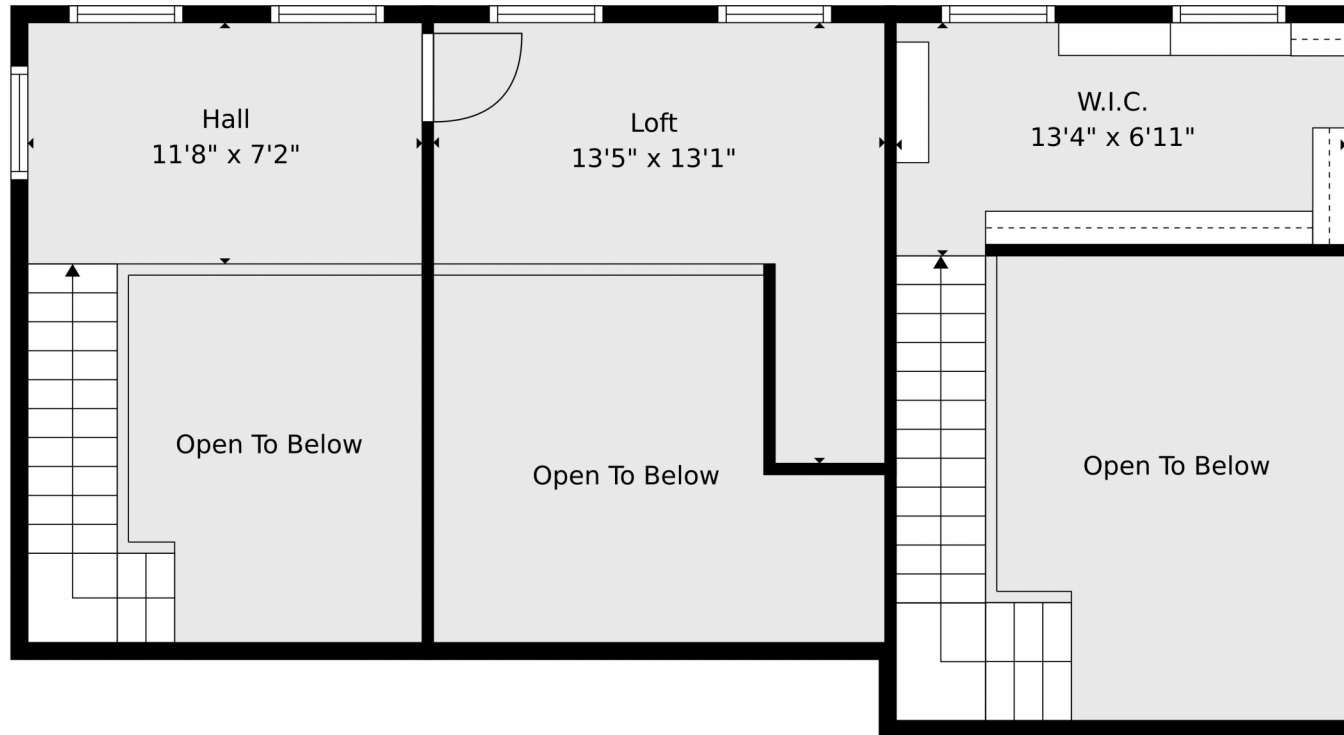
Lauren Wilson
469-360-0750
laurenkellywilson@gmail.com



Scan code
for more
property
details



8286 Lightening View Drive, Parker, CO 80134 — 3rd Level



TOTAL: 4385 sq. ft

Basement 1: 1125 sq. ft, 1st floor: 1869 sq. ft, 2nd floor: 1016 sq. ft, 3rd floor: 375 sq. ft
EXCLUDED AREAS: GARAGE: 645 sq. ft, UTILITY: 214 sq. ft, PATIO: 277 sq. ft,
PORCH: 207 sq. ft, DECK: 820 sq. ft, FIREPLACE: 14 sq. ft,
BALCONY: 196 sq. ft, OPEN TO BELOW: 842 sq. ft, LOW CEILING: 18 sq. ft,
WALLS: 354 sq. ft

Floor Plan Created By V1photos.com. Measurements Deamed Highly Reliable But Not Guaranteed.



Disclaimer: Sizes and Dimensions are Approximate, Actual May Vary.



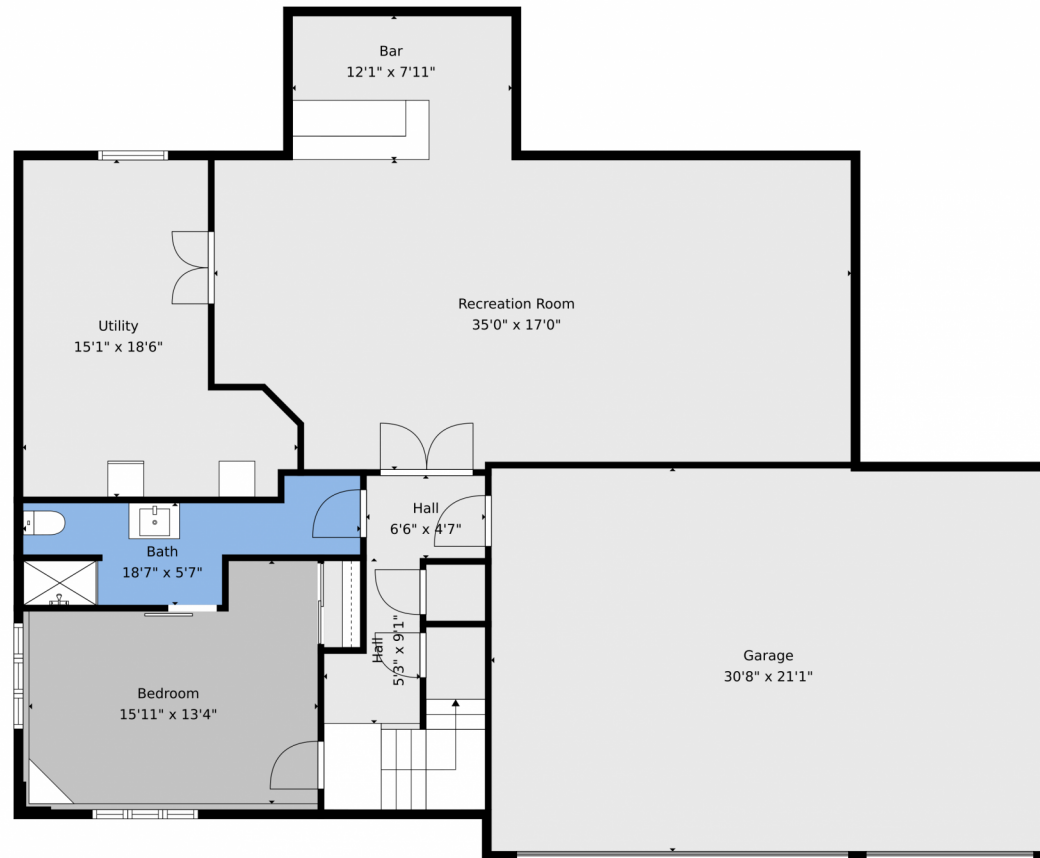
Lauren Wilson
469-360-0750
laurenkellywilson@gmail.com



Scan code
for more
property
details



8286 Lightening View Drive, Parker, CO 80134 — Basement



TOTAL: 4385 sq. ft

Basement 1: 1125 sq. ft, 1st floor: 1869 sq. ft, 2nd floor: 1016 sq. ft, 3rd floor: 375 sq. ft
EXCLUDED AREAS: GARAGE: 645 sq. ft, UTILITY: 214 sq. ft, PATIO: 277 sq. ft,
PORCH: 207 sq. ft, DECK: 820 sq. ft, FIREPLACE: 14 sq. ft,
BALCONY: 196 sq. ft, OPEN TO BELOW: 842 sq. ft, LOW CEILING: 18 sq. ft,
WALLS: 354 sq. ft

Floor Plan Created By V1photos.com. Measurements Deamed Highly Reliable But Not Guaranteed.



Disclaimer: Sizes and Dimensions are Approximate, Actual May Vary.



Lauren Wilson
469-360-0750
laurenkellywilson@gmail.com



Scan code
for more
property
details



8286 Lightening View Drive, Parker, CO 80134 — All Levels



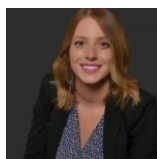
TOTAL: 4385 sq. ft

Basement 1: 1125 sq. ft, 1st floor: 1869 sq. ft, 2nd floor: 1016 sq. ft, 3rd floor: 375 sq. ft
 EXCLUDED AREAS: GARAGE: 645 sq. ft, UTILITY: 214 sq. ft, PATIO: 277 sq. ft,
 PORCH: 207 sq. ft, DECK: 820 sq. ft, FIREPLACE: 14 sq. ft,
 BALCONY: 196 sq. ft, OPEN TO BELOW: 842 sq. ft, LOW CEILING: 18 sq. ft,
 WALLS: 354 sq. ft

Floor Plan Created By V1photos.com. Measurements Deamed Highly Reliable But Not Guaranteed.



Disclaimer: Sizes and Dimensions are Approximate, Actual May Vary.



Lauren Wilson
 469-360-0750
 laurenkellywilson@gmail.com



Scan code
 for more
 property
 details

