

7252 South Costilla Street
Littleton, CO 80120



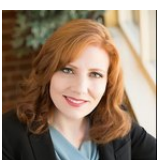
Single Family



3100 SQFT



0.18 Acre



Laurie Stoessel
303-378-2320
stoessellaurie@gmail.com



Scan code
for more
property
details



7252 South Costilla Street, Littleton, CO 80120 — Main



TOTAL: 2724 sq. ft

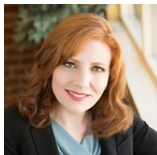
Basement 1: 1027 sq. ft, 1st floor: 1697 sq. ft

EXCLUDED AREAS: UTILITY: 238 sq. ft, STORAGE: 345 sq. ft, GARAGE: 413 sq. ft,
COVERED PATIO: 259 sq. ft, PATIO: 229 sq. ft, FIREPLACE: 22 sq. ft,
WALLS: 219 sq. ft

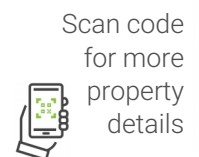
Floor Plan Created By V1photos.com, Measurements Deamed Highly Reliable But Not Guaranteed.



Disclaimer: Sizes and Dimensions are Approximate, Actual May Vary.



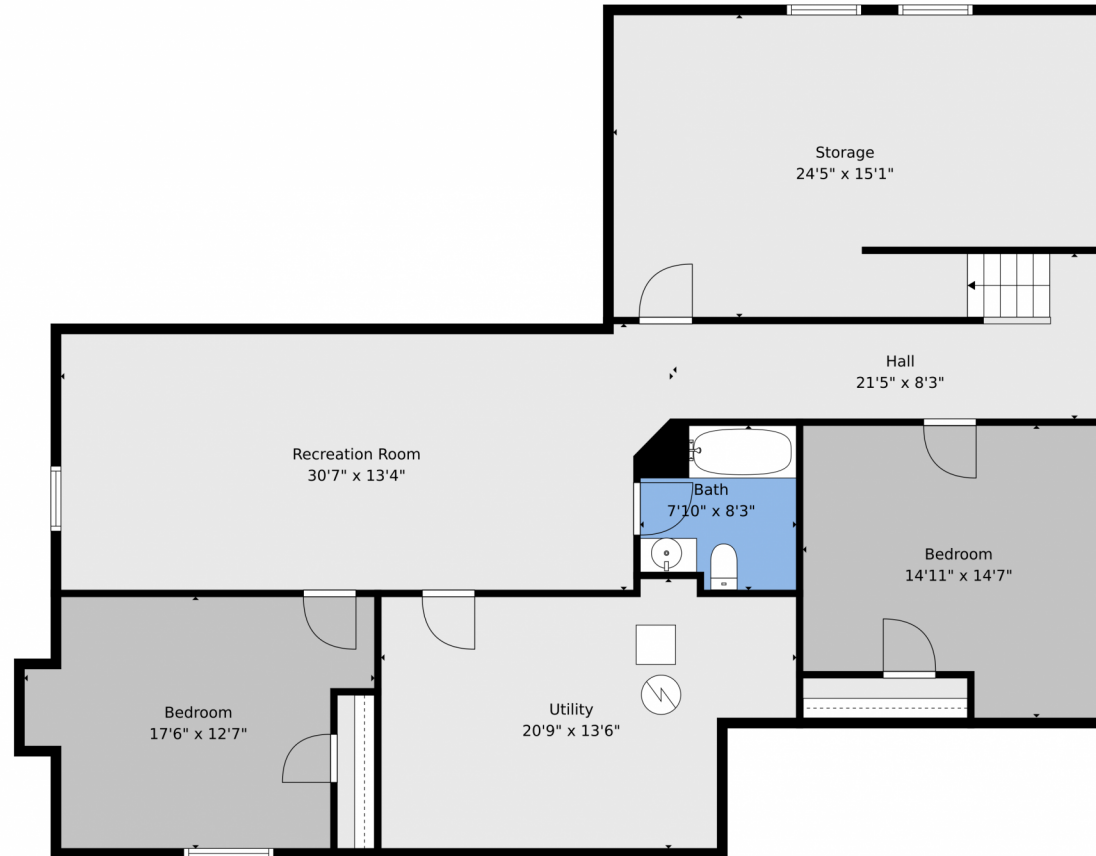
Laurie Stoessel
303-378-2320
stoessellaurie@gmail.com



Scan code
for more
property
details



7252 South Costilla Street, Littleton, CO 80120 — Basement



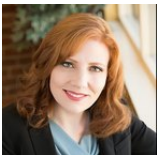
TOTAL: 2724 sq. ft

Basement 1: 1027 sq. ft, 1st floor: 1697 sq. ft
EXCLUDED AREAS: UTILITY: 238 sq. ft, STORAGE: 345 sq. ft, GARAGE: 413 sq. ft,
COVERED PATIO: 259 sq. ft, PATIO: 229 sq. ft, FIREPLACE: 22 sq. ft,
WALLS: 219 sq. ft

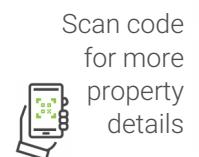
Floor Plan Created By V1photos.com. Measurements Deamed Highly Reliable But Not Guaranteed.



Disclaimer: Sizes and Dimensions are Approximate, Actual May Vary.



Laurie Stoessel
303-378-2320
stoessellaurie@gmail.com



Scan code
for more
property
details



7252 South Costilla Street, Littleton, CO 80120 — All Levels

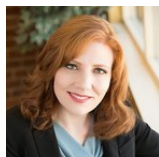


TOTAL: 2724 sq. ft
 Basement 1: 1027 sq. ft, 1st floor: 1697 sq. ft
 EXCLUDED AREAS: UTILITY: 238 sq. ft, STORAGE: 345 sq. ft, GARAGE: 413 sq. ft,
 COVERED PATIO: 259 sq. ft, PATIO: 229 sq. ft, FIREPLACE: 22 sq. ft,
 WALLS: 219 sq. ft

Floor Plan Created By V1photos.com. Measurements Deamed Highly Reliable But Not Guaranteed.



Disclaimer: Sizes and Dimensions are Approximate, Actual May Vary.



Laurie Stoessel
 303-378-2320
 stoessellaurie@gmail.com



Scan code
 for more
 property
 details

