




 Single Family

 1817 SQFT

 3 Beds

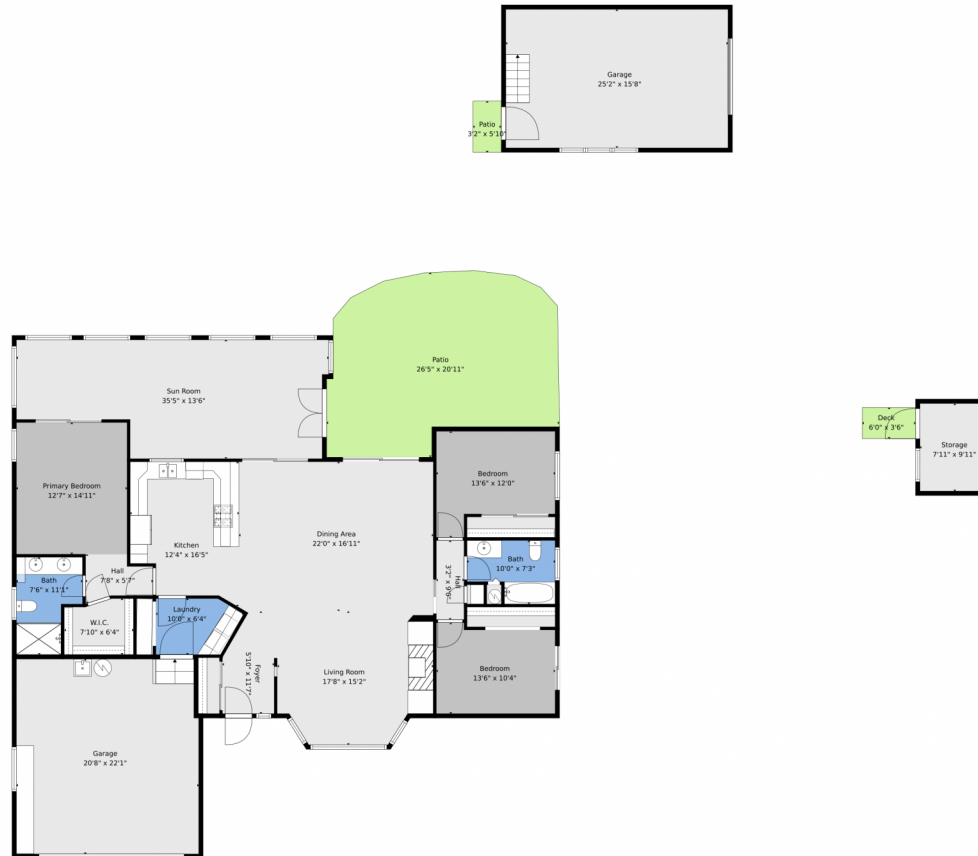
 2 Baths



Taylor Haas
303-665-7368
taylorh@coloradorpm.com
<https://www.coloradorpm.com/available-rental-properties-denver>



233 Crestridge Avenue, Colorado Springs, CO 80906 — Main Level



TOTAL: 2175 sq. ft

1st floor: 2175 sq. ft, 2nd floor: 0 sq. ft

EXCLUDED AREAS: GARAGE: 849 sq. ft, STORAGE: 78 sq. ft, PATIO: 486 sq. ft,

DECK: 21 sq. ft, LOW CEILING: 95 sq. ft, ATTIC: 300 sq. ft,

WALLS: 242 sq. ft

Floor Plan Created By V1photos.com. Measurements Deamed Highly Reliable But Not Guaranteed.



Disclaimer: Sizes and Dimensions are Approximate, Actual May Vary.



Taylor Haas

303-665-7368

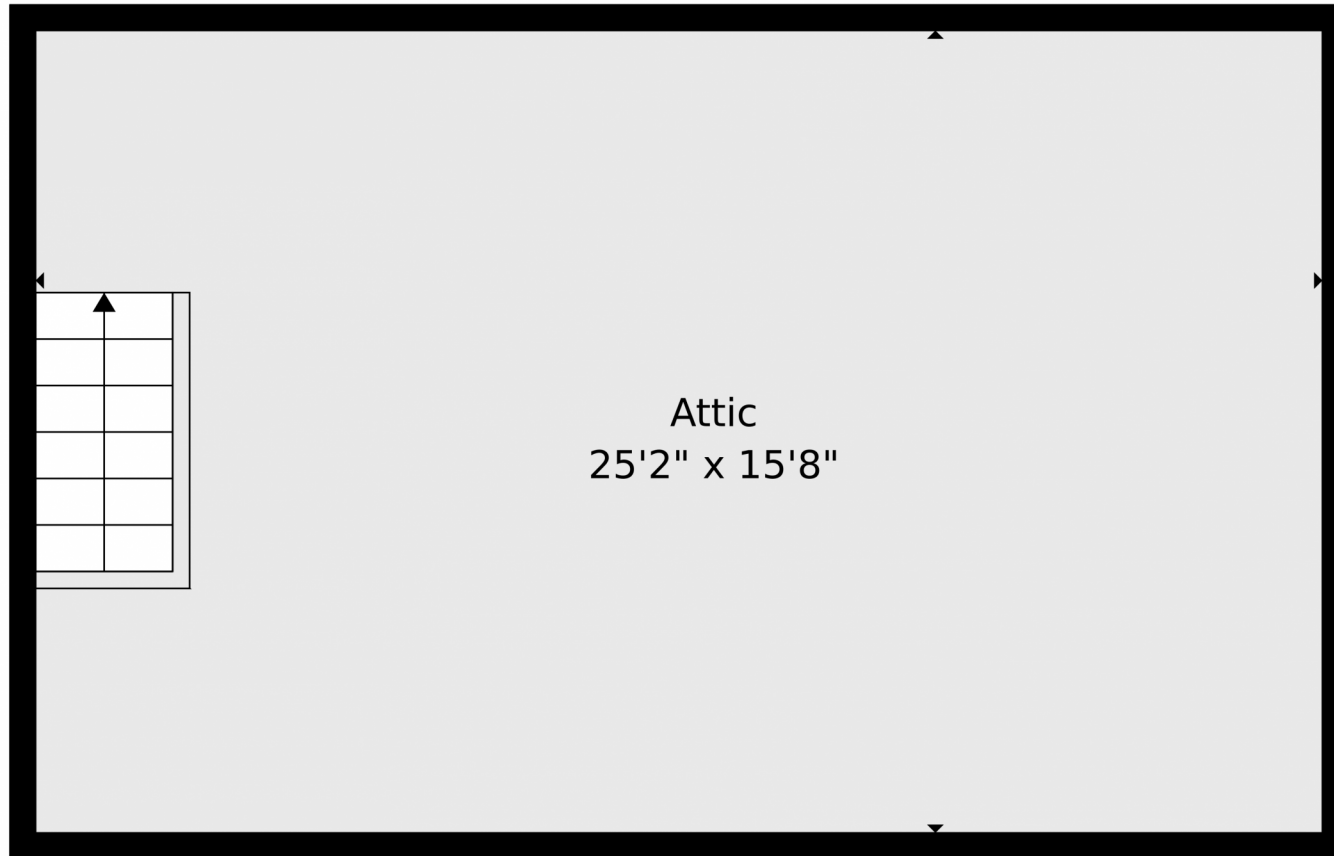
taylorh@coloradorm.com

<https://www.coloradorm.com/available-rental-properties-denver>



Scan code
for more
property
details





TOTAL: 2175 sq. ft
1st floor: 2175 sq. ft, 2nd floor: 0 sq. ft
EXCLUDED AREAS: GARAGE: 849 sq. ft, STORAGE: 78 sq. ft, PATIO: 486 sq. ft,
DECK: 21 sq. ft, LOW CEILING: 95 sq. ft, ATTIC: 300 sq. ft,
WALLS: 242 sq. ft

Floor Plan Created By V1photos.com. Measurements Deamed Highly Reliable But Not Guaranteed.



Disclaimer: Sizes and Dimensions are Approximate, Actual May Vary.



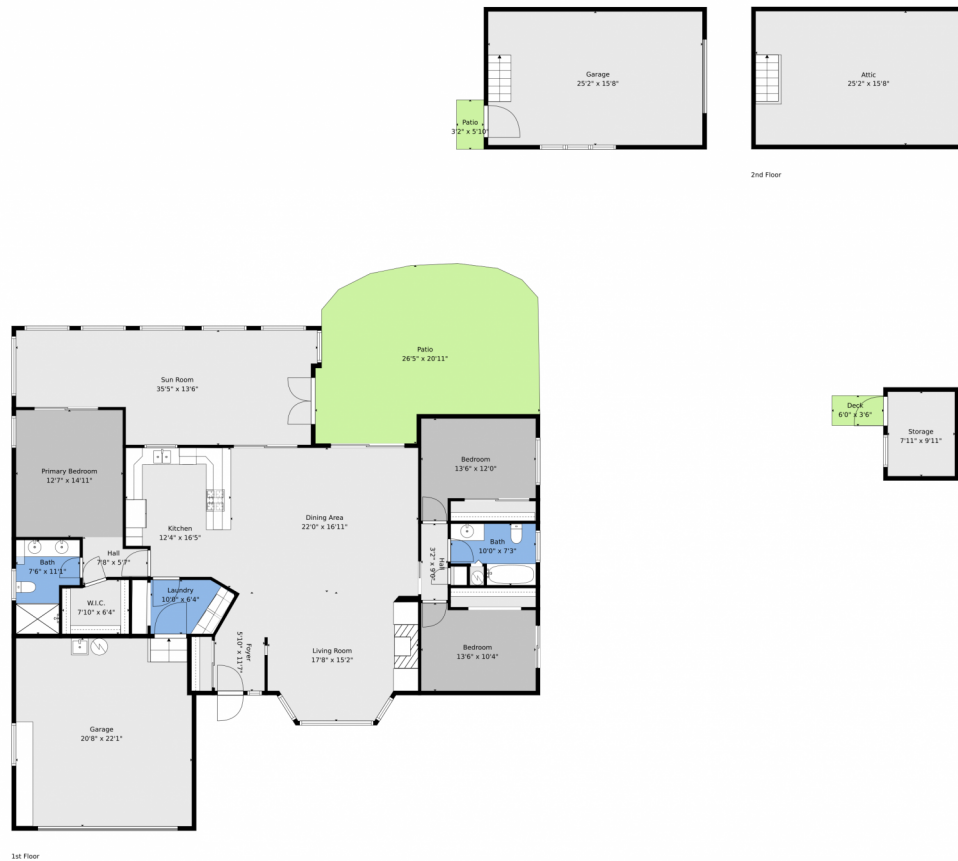
Taylor Haas
303-665-7368
taylorh@coloradorpm.com
<https://www.coloradorpm.com/available-rental-properties-denv>



Scan code
for more
property
details



233 Crestridge Avenue, Colorado Springs, CO 80906 — All Levels



TOTAL: 2175 sq. ft
 1st floor: 2175 sq. ft, 2nd floor: 0 sq. ft
 EXCLUDED AREAS: GARAGE: 849 sq. ft, STORAGE: 78 sq. ft, PATIO: 486 sq. ft,
 DECK: 21 sq. ft, LOW CEILING: 95 sq. ft, ATTIC: 300 sq. ft,
 WALLS: 242 sq. ft

Floor Plan Created By V1photos.com. Measurements Deamed Highly Reliable But Not Guaranteed.



Disclaimer: Sizes and Dimensions are Approximate, Actual May Vary.



Taylor Haas
 303-665-7368
 taylorh@coloradorpm.com
<https://www.coloradorpm.com/available-rental-properties-denver>

