

Quick Gulf Access, Must See!



Single Family



1400 SQFT



3 Beds



2 Baths



1 Car



0.02 Acre

PROPERTY DETAILS

Sailboat-access home minutes from the river, featuring a composite dock with a 10,000 lb lift, water, electric, and enhanced lighting. The property is move-in ready with new insulated impact windows, updated AC ductwork, fresh attic insulation, new hot water heater, Nest thermostat, and automatic lawn sprinklers. The exterior boasts lush landscaping and a paved walkway to the dock, with western exposure for stunning sunsets. Inside, enjoy natural light, granite counters, updated bath vanities, and spacious bedrooms. Located in a quiet, walkable neighborhood with no HOA, this home is ideal for winter escapes, vacation rentals, or year-round living.



Sandra Wall
239-839-8466
realtor.sandra.wall@gmail.com



Scan code
for more
property
details





TOTAL: 1113 sq. ft

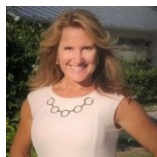
1st floor: 1113 sq. ft

EXCLUDED AREAS: GARAGE: 311 sq. ft, SCREENED PORCH: 257 sq. ft, WALLS: 138 sq. ft

Floor Plan Created By V1photos.com, Measurements Deamed Highly Reliable But Not Guaranteed.



Disclaimer: Sizes and Dimensions are Approximate, Actual May Vary.



Sandra Wall
239-839-8466
realtor.sandra.wall@gmail.com



Scan code
for more
property
details

