

floorplan_all_0



Condominium



1211 SQFT



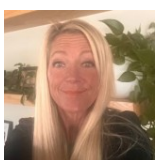
2 Beds



2 Baths

PROPERTY DETAILS

This elegant condominium in the Lofts at Belmar Square offers 2 bedrooms and 2 bathrooms across 1,211 square feet, perfect for professionals and families. The open-concept living area features high ceilings and dark wood floors, with natural light from French doors leading to a private balcony with mountain views. The kitchen is well-equipped with stainless steel appliances, stone countertops, and a breakfast bar for easy entertaining. The master suite includes a walk-in closet and ensuite bathroom for added privacy. Located in a tranquil community near parks, shopping, and dining, this condo is a unique opportunity for a balanced lifestyle in a vibrant area.



Kristine Heller
303-285-1568
leasing@elevatedpmc.com
<https://www.elevatedpmc.com/>



Scan code
for more
property
details

