




 Single Family

 1723 SQFT

 4 Beds

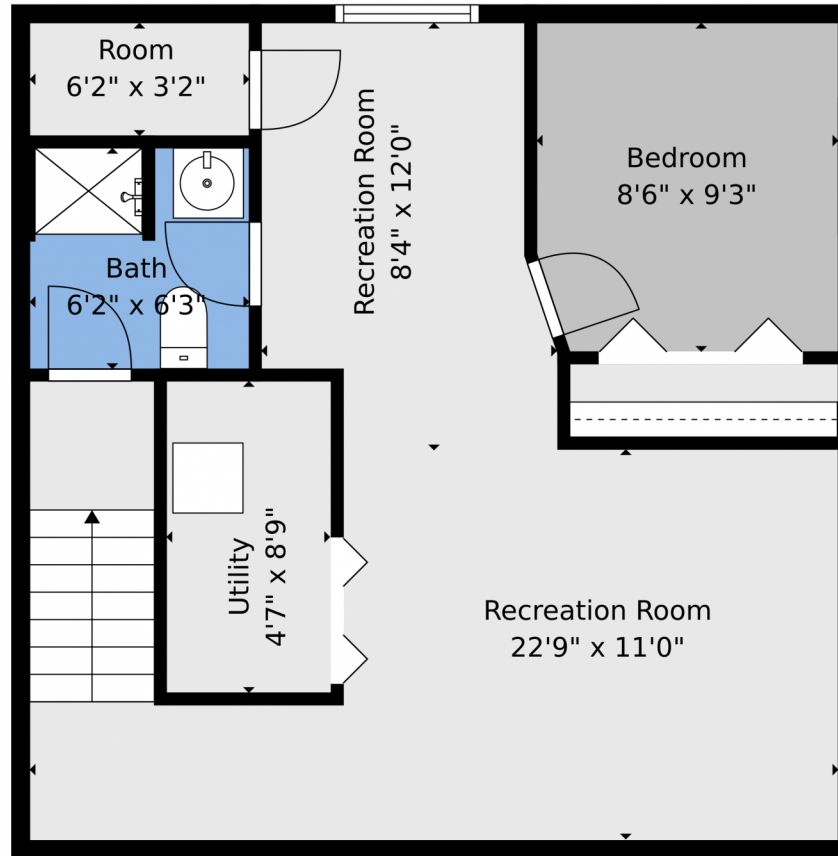
 2/1 Baths



**Taylor Haas**  
303-665-7368  
taylorh@coloradorpm.com  
<https://www.coloradorpm.com/available-rental-properties-denver>



## 3230 Springnite Dr, Colorado Springs, CO 80916 — Lower Level



**TOTAL: 1673 sq. ft**

Basement 1: 503 sq. ft, 1st floor: 548 sq. ft, 2nd floor: 622 sq. ft  
EXCLUDED AREAS: ROOM: 20 sq. ft, PATIO: 292 sq. ft, PORCH: 131 sq. ft,  
GARAGE: 255 sq. ft, SHED: 100 sq. ft, FIREPLACE: 11 sq. ft,  
WALLS: 190 sq. ft

Floor Plan Created By V1photos.com, Measurements Deamed Highly Reliable But Not Guaranteed.



Disclaimer: Sizes and Dimensions are Approximate, Actual May Vary.



**Taylor Haas**

303-665-7368

taylorh@coloradorpm.com

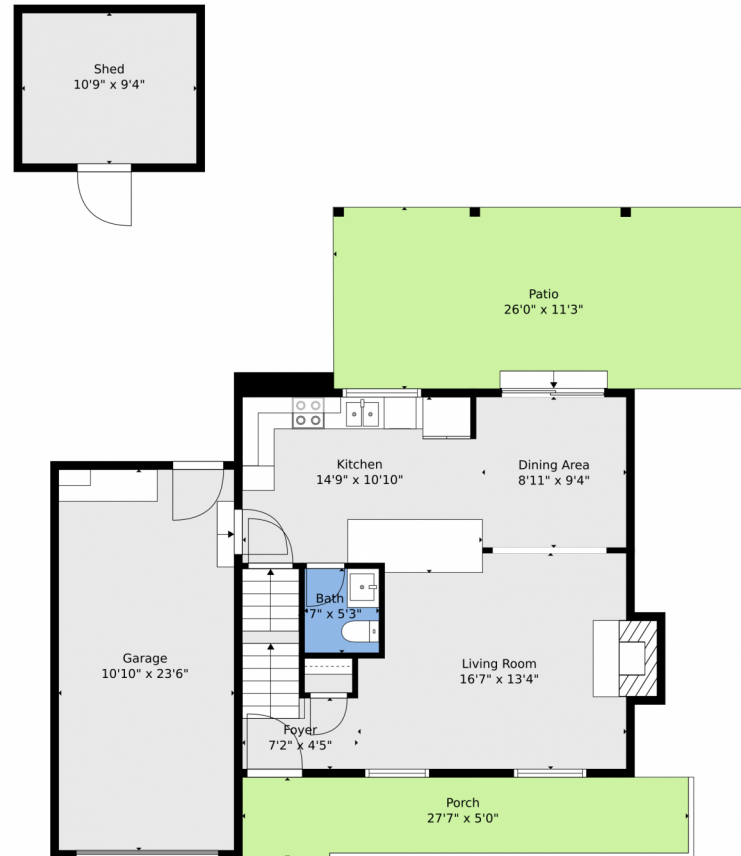
<https://www.coloradorpm.com/available-rental-properties-denver>



Scan code  
for more  
property  
details



## 3230 Springnite Dr, Colorado Springs, CO 80916 — Main Level



**TOTAL: 1673 sq. ft**

Basement 1: 503 sq. ft, 1st floor: 548 sq. ft, 2nd floor: 622 sq. ft  
EXCLUDED AREAS: ROOM: 20 sq. ft, PATIO: 292 sq. ft, PORCH: 131 sq. ft,  
GARAGE: 255 sq. ft, SHED: 100 sq. ft, FIREPLACE: 11 sq. ft,  
WALLS: 190 sq. ft

Floor Plan Created By V1photos.com, Measurements Deamed Highly Reliable But Not Guaranteed.



Disclaimer: Sizes and Dimensions are Approximate, Actual May Vary.



**Taylor Haas**

303-665-7368

taylorh@coloradorpm.com

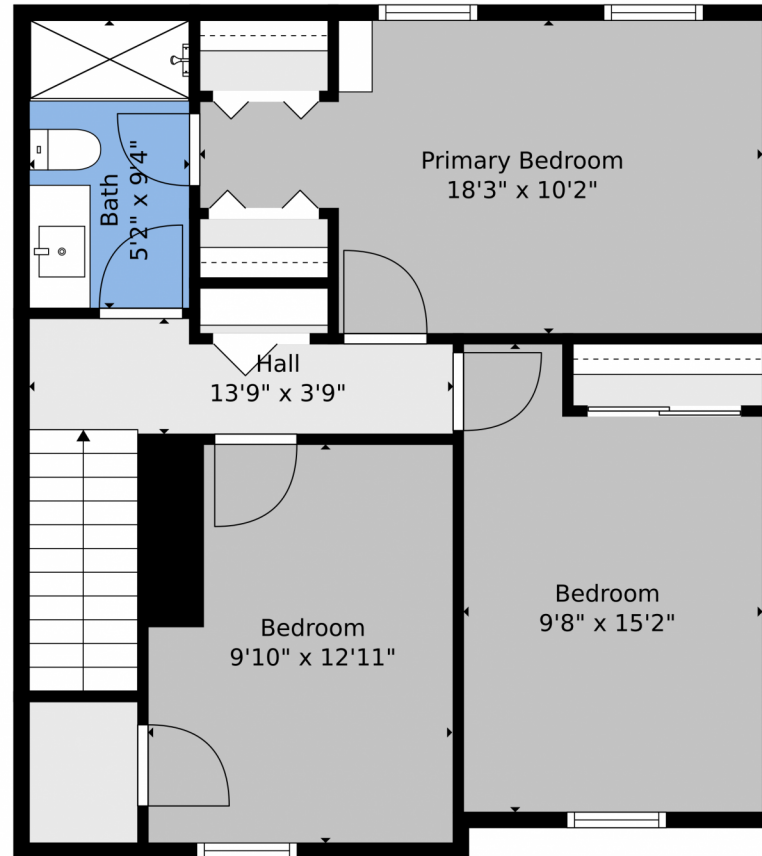
<https://www.coloradorpm.com/available-rental-properties-denver>



Scan code  
for more  
property  
details



## 3230 Springnite Dr, Colorado Springs, CO 80916 – Upper Level



**TOTAL: 1673 sq. ft**

Basement 1: 503 sq. ft, 1st floor: 548 sq. ft, 2nd floor: 622 sq. ft  
EXCLUDED AREAS: ROOM: 20 sq. ft, PATIO: 292 sq. ft, PORCH: 131 sq. ft,  
GARAGE: 255 sq. ft, SHED: 100 sq. ft, FIREPLACE: 11 sq. ft,  
WALLS: 190 sq. ft

Floor Plan Created By V1photos.com, Measurements Deamed Highly Reliable But Not Guaranteed.



Disclaimer: Sizes and Dimensions are Approximate, Actual May Vary.



**Taylor Haas**

303-665-7368

taylorh@coloradorpm.com

<https://www.coloradorpm.com/available-rental-properties-denver>



Scan code  
for more  
property  
details





# 3230 Springnite Dr, Colorado Springs, CO 80916 — All Levels



**TOTAL: 1673 sq. ft**  
 Basement 1: 503 sq. ft, 1st floor: 548 sq. ft, 2nd floor: 622 sq. ft  
 EXCLUDED AREAS: ROOM: 20 sq. ft, PATIO: 292 sq. ft, PORCH: 131 sq. ft,  
 GARAGE: 255 sq. ft, SHED: 100 sq. ft, FIREPLACE: 11 sq. ft,  
 WALLS: 190 sq. ft

Floor Plan Created By V1photos.com. Measurements Deamed Highly Reliable But Not Guaranteed.



Disclaimer: Sizes and Dimensions are Approximate, Actual May Vary.



**Taylor Haas**  
 303-665-7368  
 taylorh@coloradorpm.com  
<https://www.coloradorpm.com/available-rental-properties-denver>



Scan code  
 for more  
 property  
 details

