






3170 Shikra View
Colorado Springs, CO 80916



 Single Family

 1561 SQFT

 3 Beds

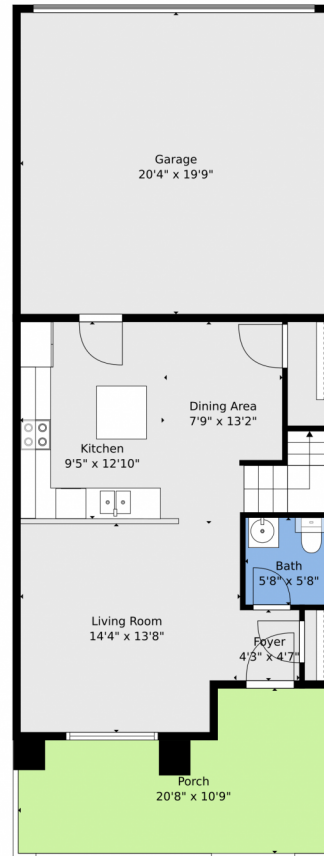
 2/1 Baths



Taylor Haas
303-665-7368
taylorh@coloradorpmm.com
<https://www.coloradorpmm.com/available-rental-properties-denver>



3170 Shikra View, Colorado Springs, CO 80916 — Main Level



TOTAL: 1475 sq. ft
1st floor: 519 sq. ft, 2nd floor: 956 sq. ft
EXCLUDED AREAS: GARAGE: 401 sq. ft, PORCH: 179 sq. ft, WALLS: 147 sq. ft

Floor Plan Created By V1photos.com, Measurements Deamed Highly Reliable But Not Guaranteed.



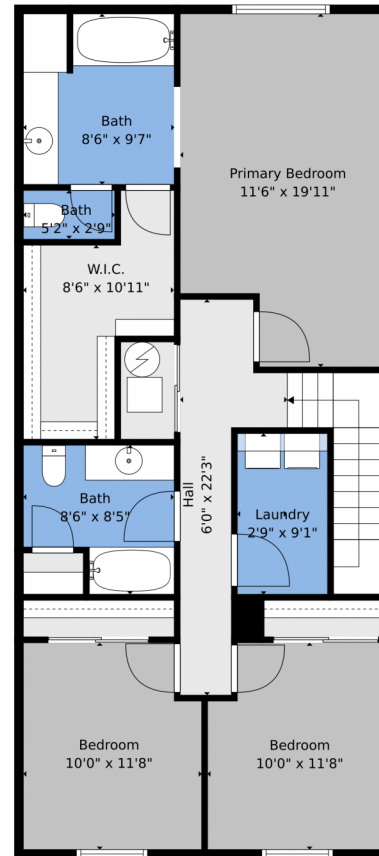
Disclaimer: Sizes and Dimensions are Approximate, Actual May Vary.



Taylor Haas
303-665-7368
taylorh@coloradorpm.com
<https://www.coloradorpm.com/available-rental-properties-denver>



3170 Shikra View, Colorado Springs, CO 80916 — 2nd Level



TOTAL: 1475 sq. ft
1st floor: 519 sq. ft, 2nd floor: 956 sq. ft
EXCLUDED AREAS: GARAGE: 401 sq. ft, PORCH: 179 sq. ft, WALLS: 147 sq. ft

Floor Plan Created By V1photos.com, Measurements Deamed Highly Reliable But Not Guaranteed.



Disclaimer: Sizes and Dimensions are Approximate, Actual May Vary.



Taylor Haas
303-665-7368
taylorh@coloradorpm.com
<https://www.coloradorpm.com/available-rental-properties-denver>



3170 Shikra View, Colorado Springs, CO 80916 — All Levels



TOTAL: 1475 sq. ft
1st floor: 519 sq. ft, 2nd floor: 956 sq. ft
EXCLUDED AREAS: GARAGE: 401 sq. ft, PORCH: 179 sq. ft, WALLS: 147 sq. ft

Floor Plan Created By V1photos.com, Measurements Deamed Highly Reliable But Not Guaranteed.



Disclaimer: Sizes and Dimensions are Approximate, Actual May Vary.



Taylor Haas
303-665-7368
taylorh@coloradorm.com
<https://www.coloradorm.com/available-rental-properties-denver>

