



 Single Family
  5036 SQFT
  5 Beds
  3 Baths
  2 Car
  0.43 Acre

PROPERTY DETAILS

WITHDRAWN for the holidays; check back in January or contact the listing agent for a private tour. Inspired by a Vail Village chalet, this stunning Applewood home features mountain-inspired design just minutes from downtown. Located on a quiet cul-de-sac, it offers sweeping views of Table Mountain. The home boasts vaulted ceilings, skylights, and three fireplaces, creating a warm atmosphere filled with light.

The updated kitchen flows into the living area and backyard, while the main level includes two bedrooms and a bath. The primary suite upstairs offers a private balcony, new en-suite bath, and cozy loft. The lower level has a family room, bedroom, and sauna.

Outside, enjoy a tranquil backyard with lush foliage, a koi pond, and a waterfall. With modern updates and breathtaking views, this home is a private Colorado retreat.



Mac Jarrett
303-548-2987
mac@guidere.com



12362 W 16th Drive, Lakewood, CO 80215 – Lower Level



TOTAL: 4201 sq. ft

1st floor: 1340 sq. ft, 2nd floor: 2168 sq. ft, 3rd floor: 693 sq. ft
EXCLUDED AREAS: GARAGE: 618 sq. ft, ROOM: 146 sq. ft, UTILITY: 78 sq. ft,
BALCONY: 299 sq. ft, PORCH: 108 sq. ft, PATIO: 167 sq. ft,
DECK: 224 sq. ft, BAY WINDOW: 6 sq. ft, LOW CEILING: 468 sq. ft,
OPEN TO BELOW: 251 sq. ft, ATTIC: 100 sq. ft, WALLS: 394 sq. ft

Floor Plan Created By V1photos.com. Measurements Deamed Highly Reliable But Not Guaranteed.



Disclaimer: Sizes and Dimensions are Approximate, Actual May Vary.



Mac Jarrett
303-548-2987
mac@guidere.com



Scan code
for more
property
details



12362 W 16th Drive, Lakewood, CO 80215 – Main



TOTAL: 4201 sq. ft

1st floor: 1340 sq. ft, 2nd floor: 2168 sq. ft, 3rd floor: 693 sq. ft
EXCLUDED AREAS: GARAGE: 618 sq. ft, ROOM: 146 sq. ft, UTILITY: 78 sq. ft,
BALCONY: 299 sq. ft, PORCH: 108 sq. ft, PATIO: 167 sq. ft,
DECK: 224 sq. ft, BAY WINDOW: 6 sq. ft, LOW CEILING: 468 sq. ft,
OPEN TO BELOW: 251 sq. ft, ATTIC: 100 sq. ft, WALLS: 394 sq. ft

Floor Plan Created By V1photos.com. Measurements Deamed Highly Reliable But Not Guaranteed.



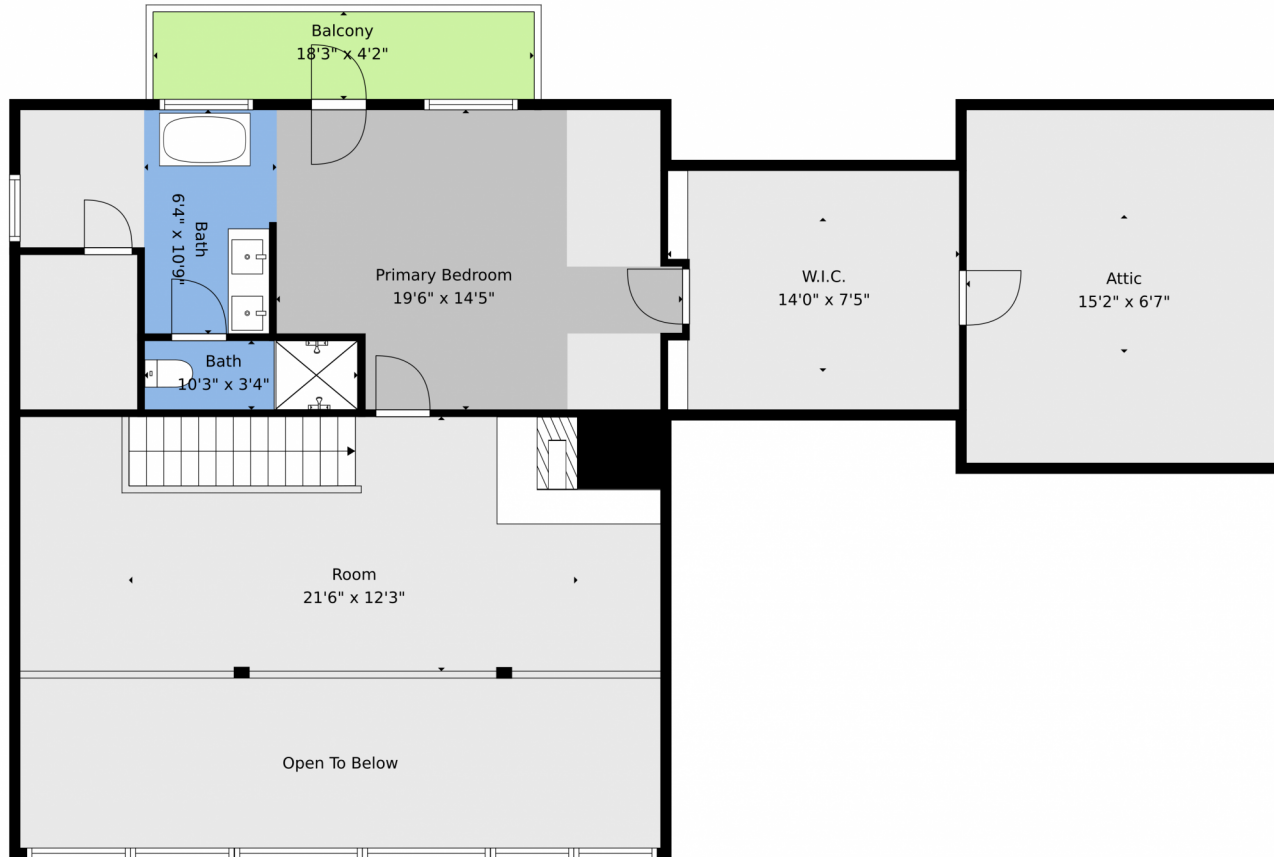
Disclaimer: Sizes and Dimensions are Approximate, Actual May Vary.



Mac Jarrett
303-548-2987
mac@guidere.com



12362 W 16th Drive, Lakewood, CO 80215 – 2nd Level



TOTAL: 4201 sq. ft

1st floor: 1340 sq. ft, 2nd floor: 2168 sq. ft, 3rd floor: 693 sq. ft
EXCLUDED AREAS: GARAGE: 618 sq. ft, ROOM: 146 sq. ft, UTILITY: 78 sq. ft,
BALCONY: 299 sq. ft, PORCH: 108 sq. ft, PATIO: 167 sq. ft,
DECK: 224 sq. ft, BAY WINDOW: 6 sq. ft, LOW CEILING: 468 sq. ft,
OPEN TO BELOW: 251 sq. ft, ATTIC: 100 sq. ft, WALLS: 394 sq. ft

Floor Plan Created By V1photos.com. Measurements Deamed Highly Reliable But Not Guaranteed.



Disclaimer: Sizes and Dimensions are Approximate, Actual May Vary.



Mac Jarrett
303-548-2987
mac@guidere.com



Scan code
for more
property
details



12362 W 16th Drive, Lakewood, CO 80215 – All Levels



TOTAL: 4201 sq. ft
 1st floor: 1340 sq. ft, 2nd floor: 2168 sq. ft, 3rd floor: 693 sq. ft
 EXCLUDED AREAS: GARAGE: 618 sq. ft, ROOM: 146 sq. ft, UTILITY: 78 sq. ft,
 BALCONY: 299 sq. ft, PORCH: 108 sq. ft, PATIO: 167 sq. ft,
 DECK: 224 sq. ft, BAY WINDOW: 6 sq. ft, LOW CEILING: 468 sq. ft,
 OPEN TO BELOW: 251 sq. ft, ATTIC: 100 sq. ft, WALLS: 394 sq. ft

Floor Plan Created By V1photos.com. Measurements Deamed Highly Reliable But Not Guaranteed.



Disclaimer: Sizes and Dimensions are Approximate, Actual May Vary.



Mac Jarrett
 303-548-2987
 mac@guidere.com

