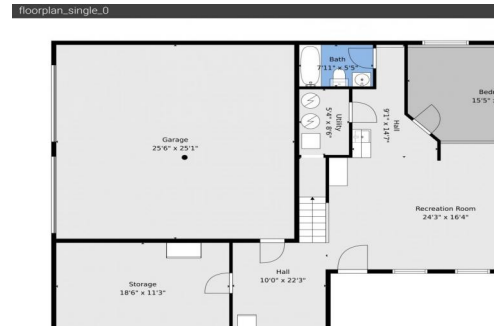




1146 Tapadero Road
 Bailey, CO 80421
COMMUNITY: Deer Creek Valley Ranchos

PRICE \$935,000



Single Family



3450 SQFT



4 Beds



3 Baths



2 Car



4.52 Acre

PROPERTY DETAILS

Welcome to 1146 Tapadero Road - a Colorado mountain home buyers dream. Where the View, Privacy and Serenity flow with the convenience of a well maintained and renovated home. Imagine morning coffee on the deck, sunset soaks in the hot tub, your 10' tree in the great room for the holidays or fire-side drinks with friends: this is the good life. Property highlights include main floor living with renovation to the kitchen and bathrooms, newer deck, new exterior paint, 2021 Roof, and "mother-in-law" option in the walkout basement. 6 person septic system, household use well, fire mitigated, Starlink currently used by Sellers, fiber internet currently being installed in neighborhood.



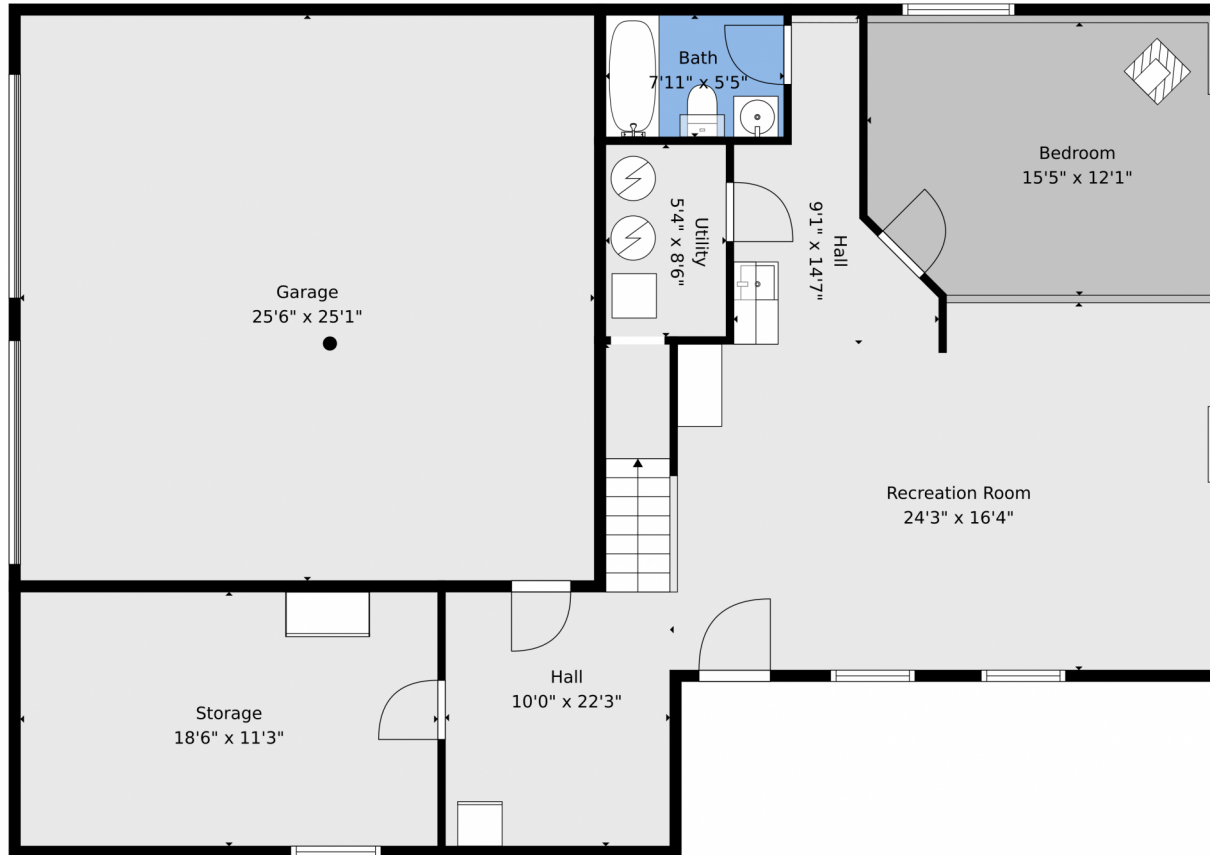
Jodi Dolph
 303-902-9968
 jodi.dolph@kw.com
<https://www.TheDolphTeam.com>



Scan code
 for more
 property
 details



1146 Tapadero Road, Bailey, CO 80421 – Lower Level



TOTAL: 3001 sq. ft
Basement: 847 sq. ft, 1st floor: 1795 sq. ft, 2nd floor: 359 sq. ft
EXCLUDED AREAS: STORAGE: 209 sq. ft, GARAGE: 639 sq. ft, UTILITY: 46 sq. ft,
DECK: 608 sq. ft, OPEN TO BELOW: 662 sq. ft, LOW CEILING: 49 sq. ft,
WALLS: 277 sq. ft

Floor Plan Created By V1photos.com. Measurements Deamed Highly Reliable But Not Guaranteed.



Disclaimer: Sizes and Dimensions are Approximate, Actual May Vary.



Jodi Dolph
303-902-9968
jodi.dolph@kw.com
<https://www.TheDolphTeam.com>



1146 Tapadero Road, Bailey, CO 80421 – Main



TOTAL: 3001 sq. ft
Basement: 847 sq. ft, 1st floor: 1795 sq. ft, 2nd floor: 359 sq. ft
EXCLUDED AREAS: STORAGE: 209 sq. ft, GARAGE: 639 sq. ft, UTILITY: 46 sq. ft,
DECK: 608 sq. ft, OPEN TO BELOW: 662 sq. ft, LOW CEILING: 49 sq. ft,
WALLS: 277 sq. ft

Floor Plan Created By V1photos.com. Measurements Deamed Highly Reliable But Not Guaranteed.



Disclaimer: Sizes and Dimensions are Approximate, Actual May Vary.

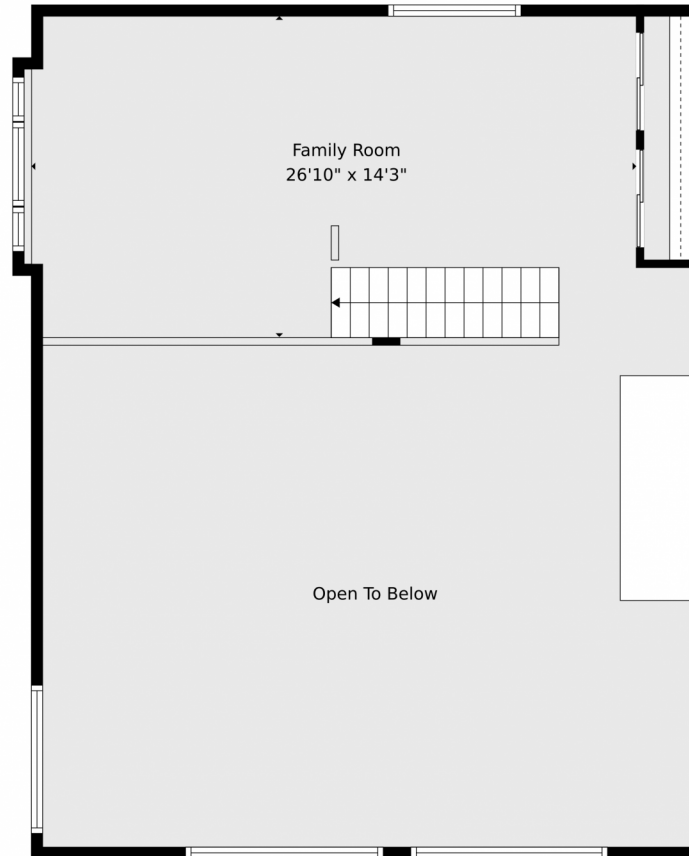


Jodi Dolph
303-902-9968
jodi.dolph@kw.com
<https://www.TheDolphTeam.com>



Scan code
for more
property
details





TOTAL: 3001 sq. ft
Basement: 847 sq. ft, 1st floor: 1795 sq. ft, 2nd floor: 359 sq. ft
EXCLUDED AREAS: STORAGE: 209 sq. ft, GARAGE: 639 sq. ft, UTILITY: 46 sq. ft,
DECK: 608 sq. ft, OPEN TO BELOW: 662 sq. ft, LOW CEILING: 49 sq. ft,
WALLS: 277 sq. ft

Floor Plan Created By V1photos.com. Measurements Deamed Highly Reliable But Not Guaranteed.



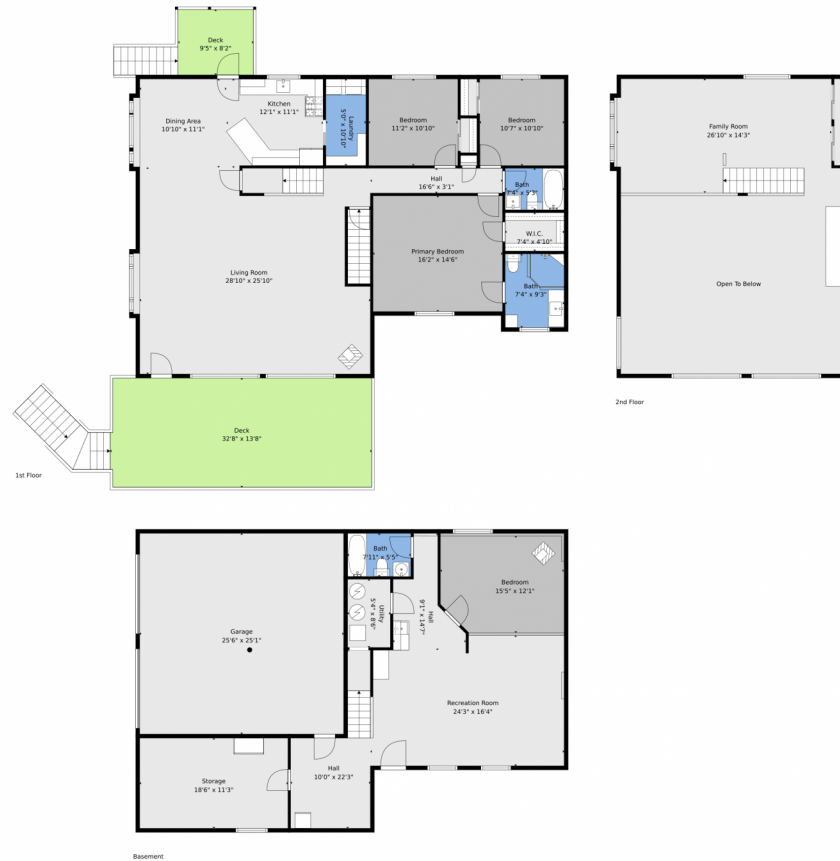
Disclaimer: Sizes and Dimensions are Approximate, Actual May Vary.



Jodi Dolph
303-902-9968
jodi.dolph@kw.com
<https://www.TheDolphTeam.com>



1146 Tapadero Road, Bailey, CO 80421 – All Levels



TOTAL: 3001 sq. ft
Basement: 847 sq. ft, 1st floor: 1795 sq. ft, 2nd floor: 359 sq. ft
EXCLUDED AREAS: STORAGE: 209 sq. ft, GARAGE: 639 sq. ft, UTILITY: 46 sq. ft,
DECK: 608 sq. ft, OPEN TO BELOW: 662 sq. ft, LOW CEILING: 49 sq. ft,
WALLS: 277 sq. ft

Floor Plan Created By V1photos.com. Measurements Deamed Highly Reliable But Not Guaranteed.



Disclaimer: Sizes and Dimensions are Approximate, Actual May Vary.



Jodi Dolph
303-902-9968
jodi.dolph@kw.com
<https://www.TheDolphTeam.com>



Scan code
for more
property
details

