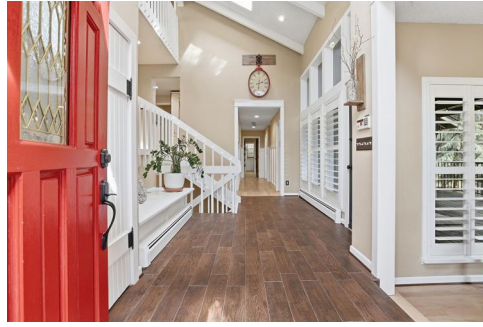


COMPASS

5806 Cantrell Court
Parker, CO 80134
COMMUNITY: The Pinery

MLS # 9269073



Single Family



4565 SQFT



4 Beds



4 Baths



2 Car



0.39 Acre



Britt Armstrong
303-550-1103
britt.armstrong@compass.com



Scan code
for more
property
details



5806 Cantrell Court, Parker, CO 80134 – All Levels



TOTAL: 4578 sq. ft
 1st floor: 897 sq. ft, 2nd floor: 730 sq. ft, 3rd floor: 960 sq. ft, 4th floor: 1757 sq. ft, 5th floor: 234 sq. ft
 EXCLUDED AREAS: STORAGE: 67 sq. ft, UTILITY: 42 sq. ft, GARAGE: 488 sq. ft,
 COVERED DECK: 509 sq. ft, BALCONY: 154 sq. ft, DECK: 738 sq. ft,
 OPEN TO BELOW: 762 sq. ft, WALLS: 493 sq. ft

Floor Plan Created By V1photos.com. Measurements Deamed Highly Reliable But Not Guaranteed.



Disclaimer: Sizes and Dimensions are Approximate, Actual May Vary.



Britt Armstrong
 303-550-1103
 britt.armstrong@compass.com

