



Single Family



4250 SQFT



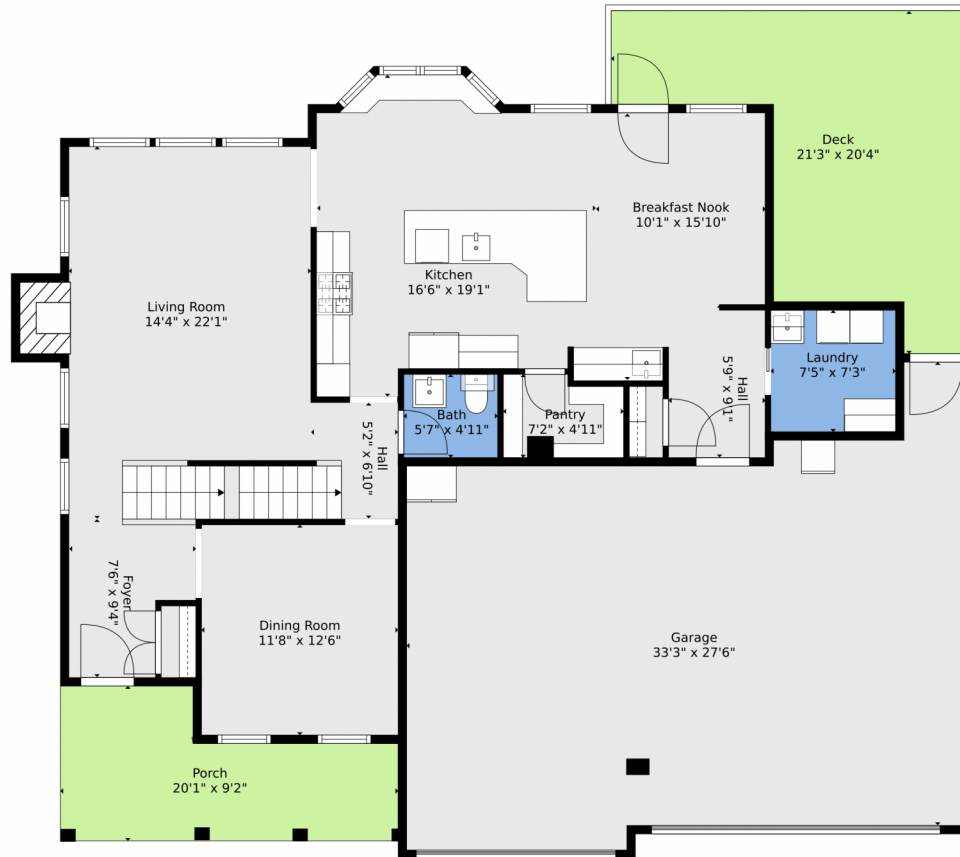
**Philip Cooper**  
970-232-4844  
pcooper@thegroupinc.com



Scan code  
for more  
property  
details



# 5920 Snowy Plover Court, Fort Collins, CO 80528 – Main



**TOTAL: 3558 sq. ft**

Basement: 992 sq. ft, 1st floor: 1186 sq. ft, 2nd floor: 1380 sq. ft  
EXCLUDED AREAS: STORAGE: 141 sq. ft, UTILITY: 149 sq. ft, PATIO: 157 sq. ft,  
PORCH: 143 sq. ft, DECK: 266 sq. ft, GARAGE: 763 sq. ft,  
FIREPLACE: 15 sq. ft, OPEN TO BELOW: 79 sq. ft, WALLS: 297 sq. ft

Floor Plan Created By V1photos.com. Measurements Deamed Highly Reliable But Not Guaranteed.



Disclaimer: Sizes and Dimensions are Approximate, Actual May Vary.



**Philip Cooper**  
970-232-4844  
pcooper@thegroupinc.com



Scan code  
for more  
property  
details



5920 Snowy Plover Court, Fort Collins, CO 80528 – 2nd Level



**TOTAL: 3558 sq. ft**

Basement: 992 sq. ft, 1st floor: 1186 sq. ft, 2nd floor: 1380 sq. ft  
EXCLUDED AREAS: STORAGE: 141 sq. ft, UTILITY: 149 sq. ft, PATIO: 157 sq. ft,  
PORCH: 143 sq. ft, DECK: 266 sq. ft, GARAGE: 763 sq. ft,  
FIREPLACE: 15 sq. ft, OPEN TO BELOW: 79 sq. ft, WALLS: 297 sq. ft

Floor Plan Created By V1photos.com. Measurements Deamed Highly Reliable But Not Guaranteed.



Disclaimer: Sizes and Dimensions are Approximate, Actual May Vary.



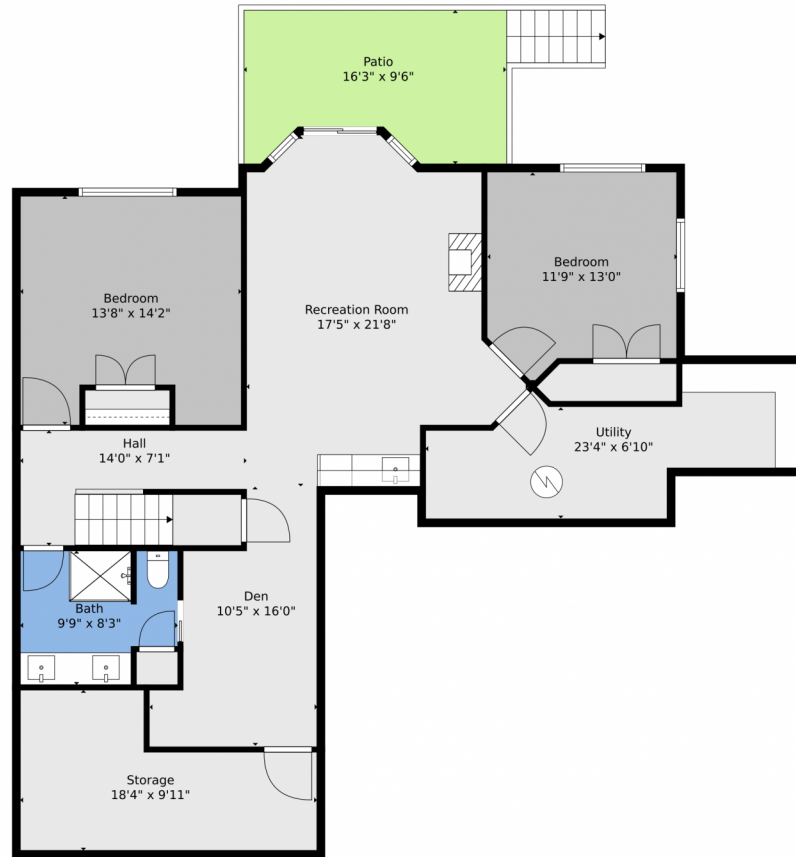
**Philip Cooper**  
970-232-4844  
pcooper@thegroupinc.com



Scan code  
for more  
property  
details



# 5920 Snowy Plover Court, Fort Collins, CO 80528 – Basement



**TOTAL: 3558 sq. ft**

Basement: 992 sq. ft, 1st floor: 1186 sq. ft, 2nd floor: 1380 sq. ft  
EXCLUDED AREAS: STORAGE: 141 sq. ft, UTILITY: 149 sq. ft, PATIO: 157 sq. ft,  
PORCH: 143 sq. ft, DECK: 266 sq. ft, GARAGE: 763 sq. ft,  
FIREPLACE: 15 sq. ft, OPEN TO BELOW: 79 sq. ft, WALLS: 297 sq. ft

Floor Plan Created By V1photos.com. Measurements Deamed Highly Reliable But Not Guaranteed.

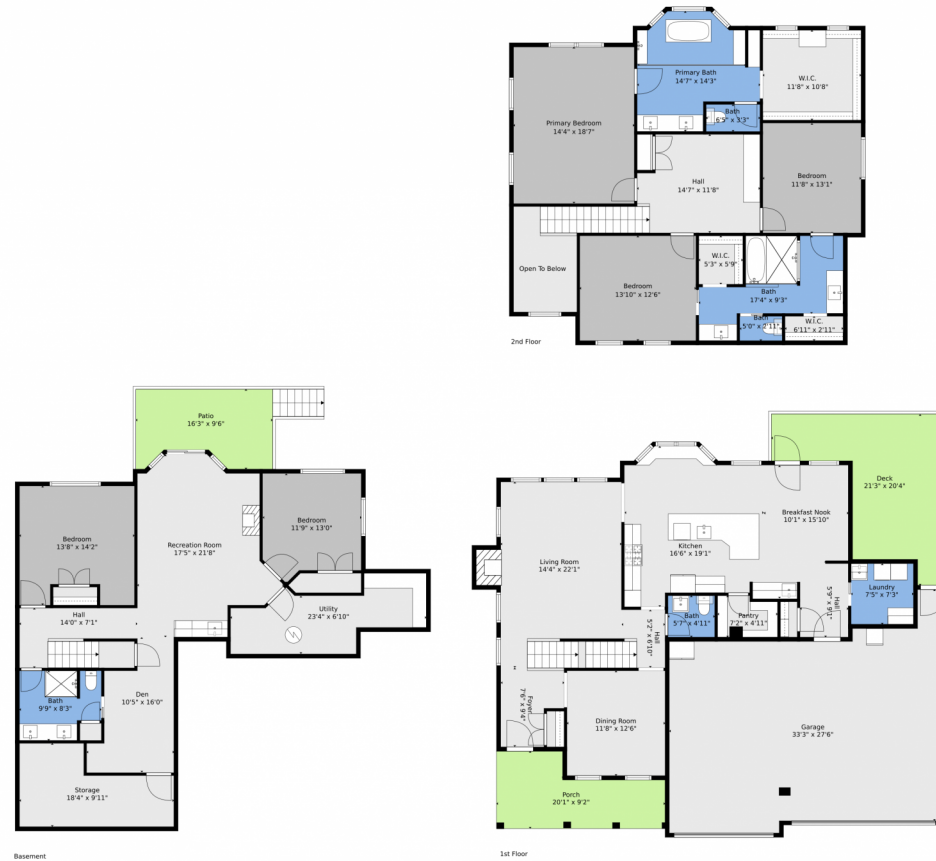
Disclaimer: Sizes and Dimensions are Approximate, Actual May Vary.



**Philip Cooper**  
970-232-4844  
pcooper@thegroupinc.com



# 5920 Snowy Plover Court, Fort Collins, CO 80528 – All Levels



**TOTAL: 3558 sq. ft**  
 Basement: 992 sq. ft, 1st floor: 1186 sq. ft, 2nd floor: 1380 sq. ft  
 EXCLUDED AREAS: STORAGE: 141 sq. ft, UTILITY: 149 sq. ft, PATIO: 157 sq. ft,  
 PORCH: 143 sq. ft, DECK: 266 sq. ft, GARAGE: 763 sq. ft,  
 FIREPLACE: 15 sq. ft, OPEN TO BELOW: 79 sq. ft, WALLS: 297 sq. ft

Floor Plan Created By V1photos.com. Measurements Deamed Highly Reliable But Not Guaranteed.



Disclaimer: Sizes and Dimensions are Approximate, Actual May Vary.



**Philip Cooper**  
 970-232-4844  
 pcooper@thegroupinc.com

