



226 Pratt Street
 Longmont, CO 80501
 COMMUNITY: Glen At Mill Park Condo 1st Ph

MLS # IR1060200
 PRICE \$529,900



Condominium



1984 SQFT



2 Beds



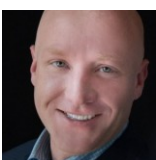
2 Baths



2 Car

PROPERTY DETAILS

Blending the charm of Historic Old Town with the comfort of thoughtful updates, this paired-home condo lives like a single-family home. Inside, soaring ceilings, original pine hardwood floors, and classic Craftsman-style details create a warm, inviting feel. Major updates completed within the past four years include the roof, carpet, A/C, furnace, added insulation, radon mitigation system, and interior and exterior paint. The spacious kitchen serves as the heart of the home and opens easily to comfortable living areas suited for both daily life and entertaining. This two-bedroom home features beautiful pine floors, an updated kitchen, and a classic claw-foot tub for added vintage character. The large private primary bedroom offers a quiet retreat with a ¾ bath and walk-in closet. Downstairs, the open walk-out basement offers excellent potential for more living space, a studio or workspace, or additional bedrooms. Enjoy low-maintenance living with the homeowners association covering routine lawn care and snow removal. Historic Old Mill Park is directly across the street, and Thompson Neighborhood Park is just north of the home. This is a rare opportunity to own a home that combines historic charm, versatility, and a prime location in one of Longmont's most convenient neighborhoods, just blocks from downtown shopping, restaurants, and the bus line.



Dave Abel
 303-725-0461
 daveabel@boulderco.com



Scan code
 for more
 property
 details

