

COMPASS

8680 Summerlin Place
Longmont, CO 80503
COMMUNITY: Summerlin

PRICE \$2,495,000

Custom Mediterranean Home!



Single Family



6800 SQFT



6 Beds



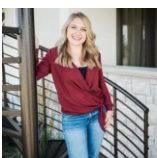
6/1 Baths



4 Car



0.76 Acre

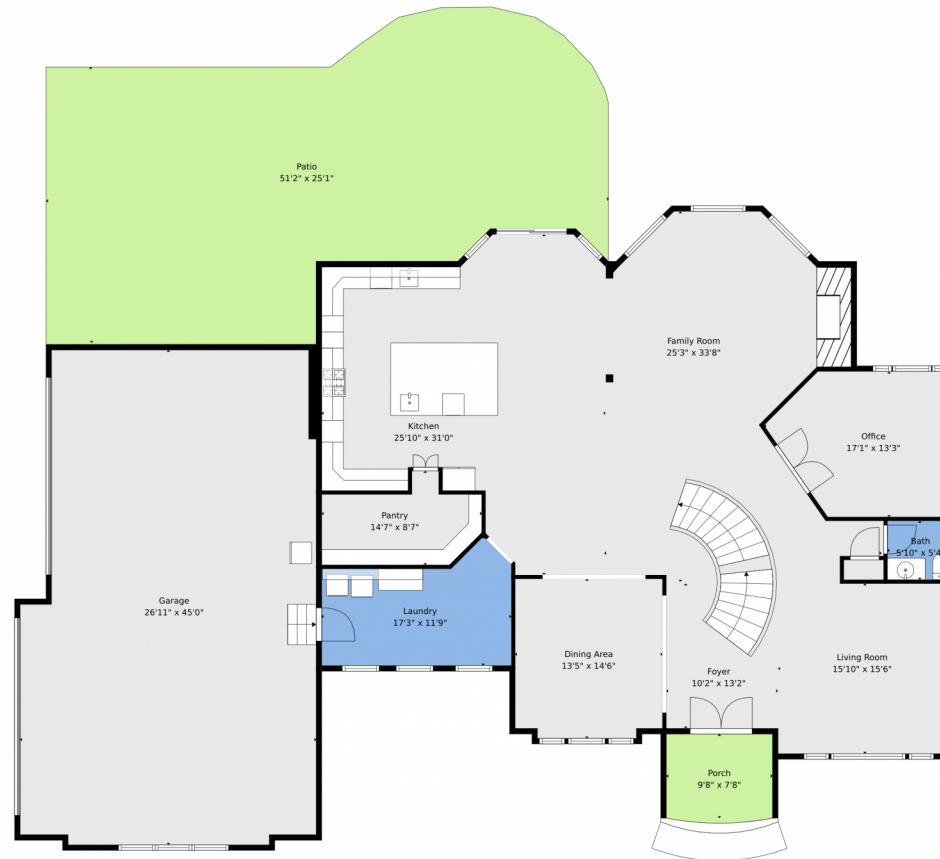


Amanda Contreras
720-595-5171
amandakayhomes@gmail.com



Scan code
for more
property
details





TOTAL: 6326 sq. ft

Basement: 2051 sq. ft, 1st floor: 2360 sq. ft, 2nd floor: 1915 sq. ft
EXCLUDED AREAS: UTILITY: 93 sq. ft, WINE CELLAR: 109 sq. ft, GARAGE: 1139 sq. ft,
PORCH: 77 sq. ft, PATIO: 1147 sq. ft, BALCONY: 84 sq. ft,
OPEN TO BELOW: 415 sq. ft, WALLS: 373 sq. ft

Floor Plan Created By V1photos.com. Measurements Deamed Highly Reliable But Not Guaranteed.



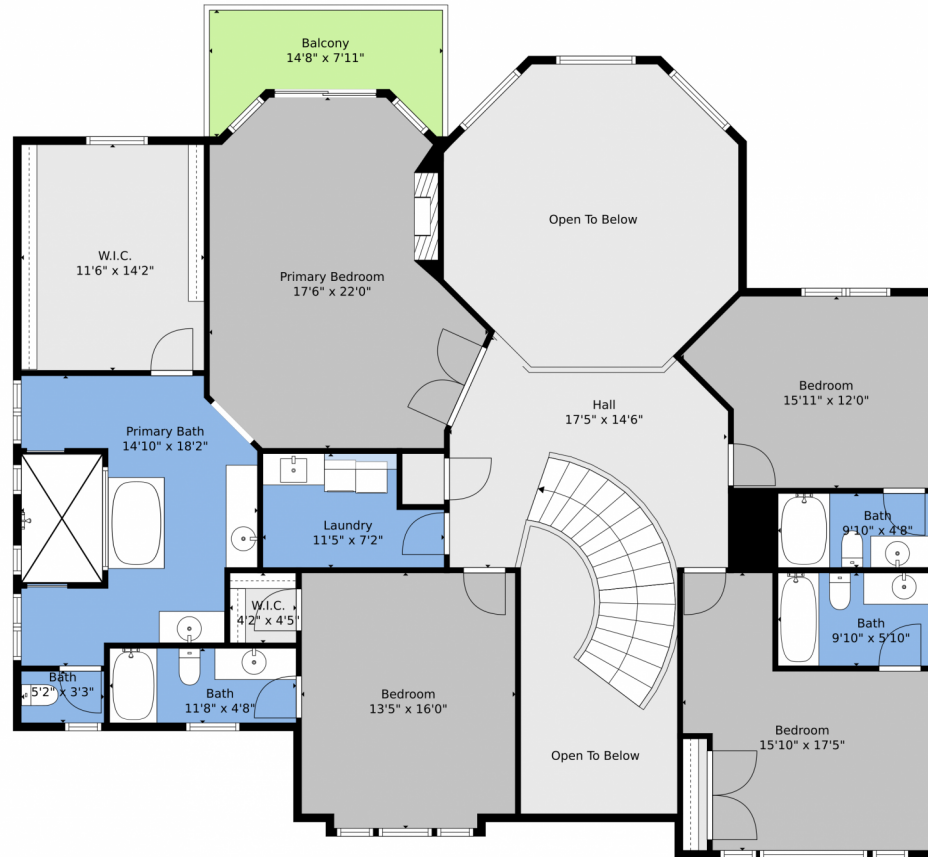
Disclaimer: Sizes and Dimensions are Approximate, Actual May Vary.



Amanda Contreras
720-595-5171
amandakayhomes@gmail.com



8680 Summerlin Place, Longmont, CO 80503 – 2nd Level



TOTAL: 6326 sq. ft

Basement: 2051 sq. ft, 1st floor: 2360 sq. ft, 2nd floor: 1915 sq. ft
EXCLUDED AREAS: UTILITY: 93 sq. ft, WINE CELLAR: 109 sq. ft, GARAGE: 1139 sq. ft,
PORCH: 77 sq. ft, PATIO: 1147 sq. ft, BALCONY: 84 sq. ft,
OPEN TO BELOW: 415 sq. ft, WALLS: 373 sq. ft

Floor Plan Created By V1photos.com. Measurements Deamed Highly Reliable But Not Guaranteed.



Disclaimer: Sizes and Dimensions are Approximate, Actual May Vary.



Amanda Contreras
720-595-5171
amandakayhomes@gmail.com



8680 Summerlin Place, Longmont, CO 80503 – Basement



TOTAL: 6326 sq. ft

Basement: 2051 sq. ft, 1st floor: 2360 sq. ft, 2nd floor: 1915 sq. ft
EXCLUDED AREAS: UTILITY: 93 sq. ft, WINE CELLAR: 109 sq. ft, GARAGE: 1139 sq. ft,
PORCH: 77 sq. ft, PATIO: 1147 sq. ft, BALCONY: 84 sq. ft,
OPEN TO BELOW: 415 sq. ft, WALLS: 373 sq. ft

Floor Plan Created By V1photos.com. Measurements Deamed Highly Reliable But Not Guaranteed.

Disclaimer: Sizes and Dimensions are Approximate, Actual May Vary.

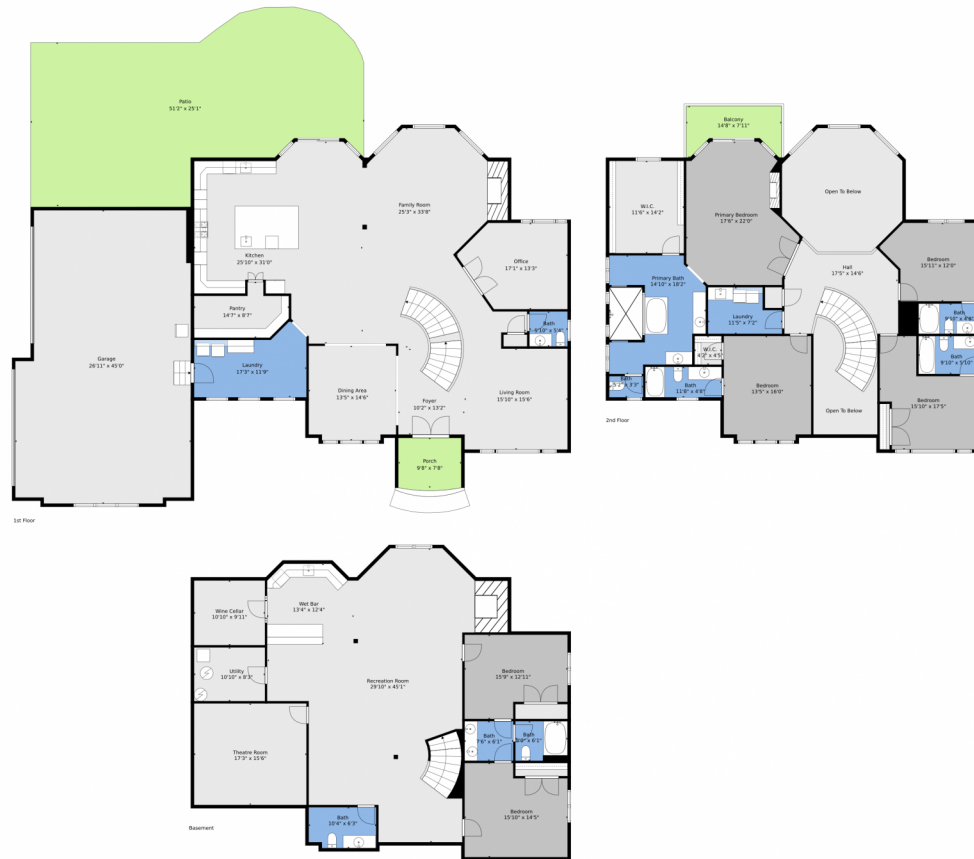


Amanda Contreras
720-595-5171
amandakayhomes@gmail.com



Scan code
for more
property
details

8680 Summerlin Place, Longmont, CO 80503 – All Levels



TOTAL: 6326 sq. ft
 Basement: 2051 sq. ft, 1st floor: 2360 sq. ft, 2nd floor: 1915 sq. ft
 EXCLUDED AREAS: UTILITY: 93 sq. ft, WINE CELLAR: 109 sq. ft, GARAGE: 1139 sq. ft,
 PORCH: 77 sq. ft, PATIO: 1147 sq. ft, BALCONY: 84 sq. ft,
 OPEN TO BELOW: 415 sq. ft, WALLS: 373 sq. ft

Floor Plan Created By V1photos.com. Measurements Deamed Highly Reliable But Not Guaranteed.



Disclaimer: Sizes and Dimensions are Approximate, Actual May Vary.



Amanda Contreras
 720-595-5171
 amandakayhomes@gmail.com



Scan code
 for more
 property
 details