



13712 Wamblee Valley Road
Conifer, CO 80433
COMMUNITY: Wamblee Valley



floorplan_single_1



Single Family



2580 SQFT



4 Beds



3 Baths



2 Car



1.25 Acre



Jodi Dolph
303-902-9968
jodi.dolph@kw.com
<https://www.TheDolphTeam.com>



13712 Wamblee Valley Road, COnifer, CO 80433 – Main



TOTAL: 2349 sq. ft
1st floor: 884 sq. ft, 2nd floor: 1465 sq. ft
EXCLUDED AREAS: GARAGE: 495 sq. ft, UNDEFINED: 24 sq. ft, PATIO: 359 sq. ft,
BALCONY: 234 sq. ft, PORCH: 68 sq. ft, WALLS: 182 sq. ft

Floor Plan Created By V1photos.com. Measurements Deamed Highly Reliable But Not Guaranteed.

Disclaimer: Sizes and Dimensions are Approximate, Actual May Vary.



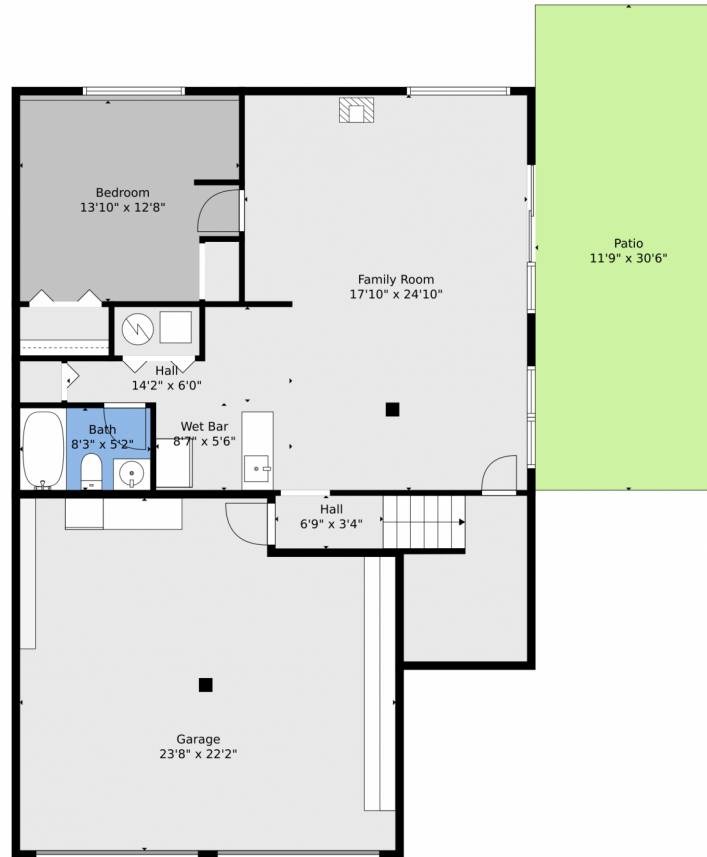
Jodi Dolph
303-902-9968
jodi.dolph@kw.com
<https://www.TheDolphTeam.com>



Scan code
for more
property
details



13712 Wamblee Valley Road, COnifer, CO 80433 – Basement



TOTAL: 2349 sq. ft
1st floor: 884 sq. ft, 2nd floor: 1465 sq. ft
EXCLUDED AREAS: GARAGE: 495 sq. ft, UNDEFINED: 24 sq. ft, PATIO: 359 sq. ft,
BALCONY: 234 sq. ft, PORCH: 68 sq. ft, WALLS: 182 sq. ft

Floor Plan Created By V1photos.com. Measurements Deamed Highly Reliable But Not Guaranteed.



Disclaimer: Sizes and Dimensions are Approximate, Actual May Vary.



Jodi Dolph
303-902-9968
jodi.dolph@kw.com
<https://www.TheDolphTeam.com>



13712 Wamblee Valley Road, COnifer, CO 80433 – All Levels



1st Floor

2nd Floor

TOTAL: 2349 sq. ft
1st floor: 884 sq. ft, 2nd floor: 1465 sq. ft
EXCLUDED AREAS: GARAGE: 495 sq. ft, UNDEFINED: 24 sq. ft, PATIO: 359 sq. ft,
BALCONY: 234 sq. ft, PORCH: 68 sq. ft, WALLS: 182 sq. ft

Floor Plan Created By V1photos.com. Measurements Deamed Highly Reliable But Not Guaranteed.



Disclaimer: Sizes and Dimensions are Approximate, Actual May Vary.



Jodi Dolph
303-902-9968
jodi.dolph@kw.com
<https://www.TheDolphTeam.com>



Scan code
for more
property
details

