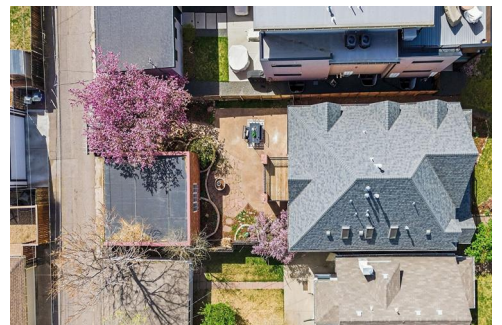
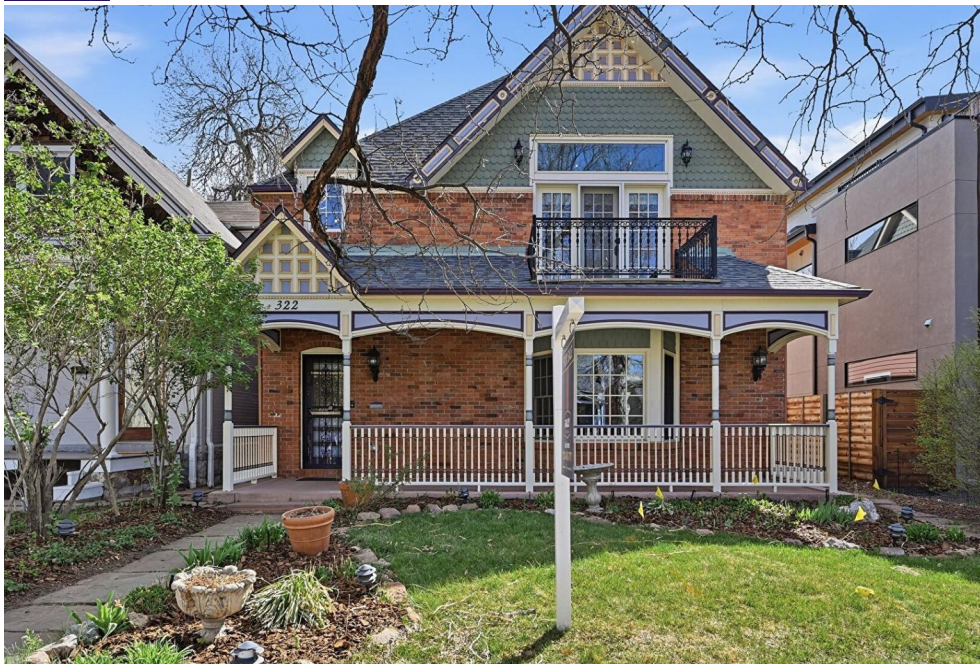




322 South Humboldt Street
 Denver, CO 80209
 COMMUNITY: Wash Park



Single Family



2744 SQFT



4 Beds



3 Baths



1 Car



0.11 Acre

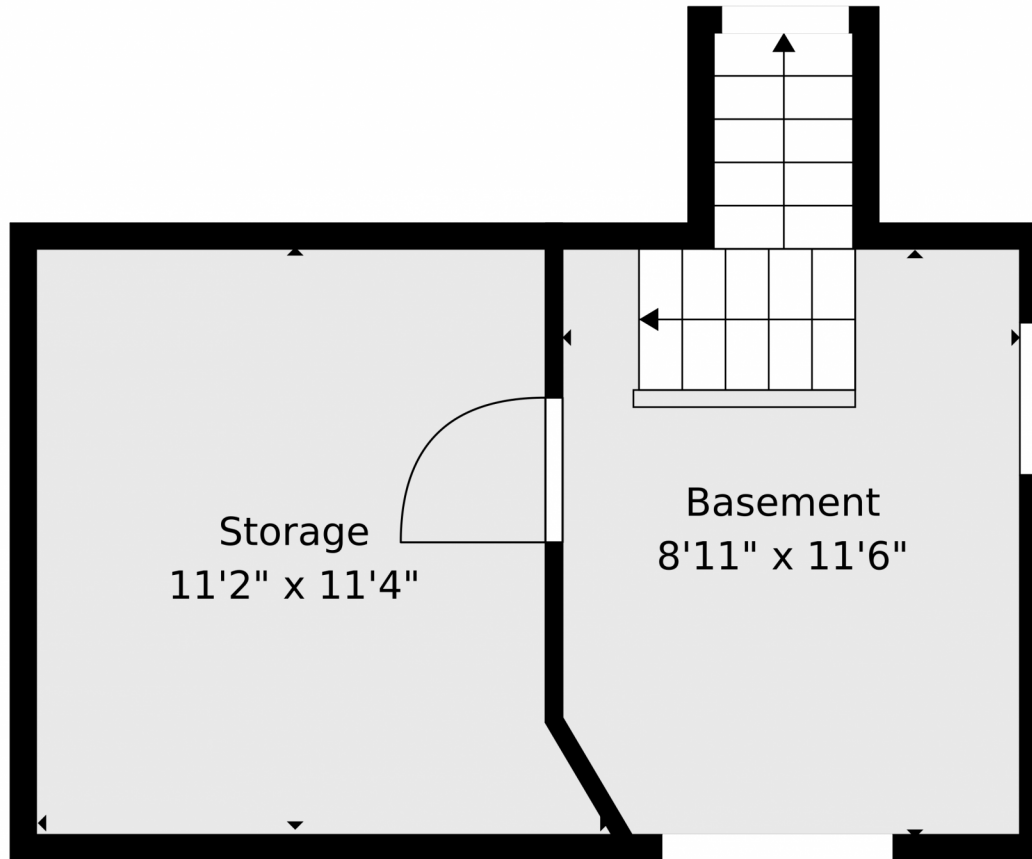


Ilan Brown
 720-480-7171
 ilan@rallyregroup.com



Scan code
 for more
 property
 details





TOTAL: 2451 sq. ft
Basement: 0 sq. ft, 1st floor: 1268 sq. ft, 2nd floor: 1183 sq. ft
EXCLUDED AREAS: BASEMENT: 116 sq. ft, STORAGE: 115 sq. ft, GARAGE: 483 sq. ft,
PORCH: 196 sq. ft, PATIO: 1349 sq. ft, BALCONY: 87 sq. ft,
OPEN TO BELOW: 25 sq. ft, STAIRWELL: 32 sq. ft, WALLS: 226 sq. ft

Floor Plan Created By V1photos.com. Measurements Deamed Highly Reliable But Not Guaranteed.



Disclaimer: Sizes and Dimensions are Approximate, Actual May Vary.



Ilan Brown
720-480-7171
ilan@rallyregroup.com



322 South Humboldt Street, Denver, CO 80209 – First Level



TOTAL: 2451 sq. ft

Basement: 0 sq. ft, 1st floor: 1268 sq. ft, 2nd floor: 1183 sq. ft
EXCLUDED AREAS: BASEMENT: 116 sq. ft, STORAGE: 115 sq. ft, GARAGE: 483 sq. ft,
PORCH: 196 sq. ft, PATIO: 1349 sq. ft, BALCONY: 87 sq. ft,
OPEN TO BELOW: 25 sq. ft, STAIRWELL: 32 sq. ft, WALLS: 226 sq. ft

Floor Plan Created By V1photos.com. Measurements Deamed Highly Reliable But Not Guaranteed.



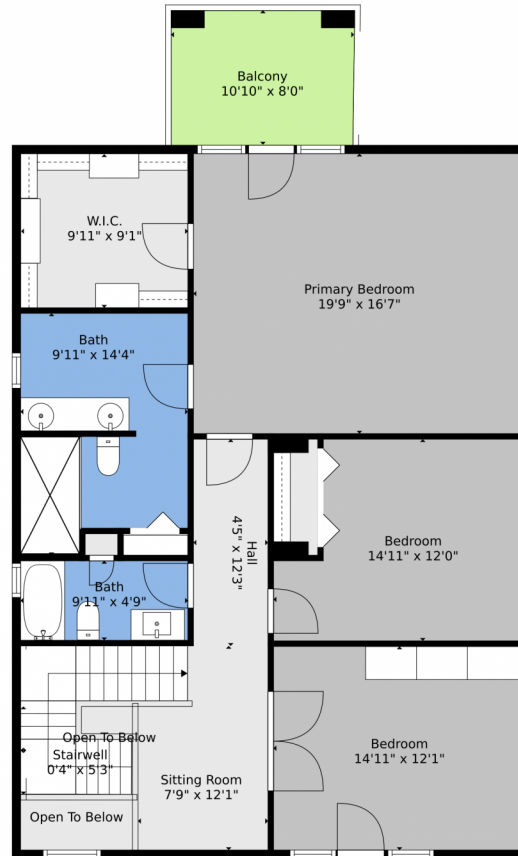
Disclaimer: Sizes and Dimensions are Approximate, Actual May Vary.



Ilan Brown
720-480-7171
ilan@rallyregroup.com



322 South Humboldt Street, Denver, CO 80209 – Second Level



TOTAL: 2451 sq. ft

Basement: 0 sq. ft, 1st floor: 1268 sq. ft, 2nd floor: 1183 sq. ft
EXCLUDED AREAS: BASEMENT: 116 sq. ft, STORAGE: 115 sq. ft, GARAGE: 483 sq. ft,
PORCH: 196 sq. ft, PATIO: 1349 sq. ft, BALCONY: 87 sq. ft,
OPEN TO BELOW: 25 sq. ft, STAIRWELL: 32 sq. ft, WALLS: 226 sq. ft

Floor Plan Created By V1photos.com. Measurements Deamed Highly Reliable But Not Guaranteed.



Disclaimer: Sizes and Dimensions are Approximate, Actual May Vary.



Ilan Brown
720-480-7171
ilan@rallyregroup.com



322 South Humboldt Street, Denver, CO 80209 – All levels



TOTAL: 2451 sq. ft

Basement: 0 sq. ft, 1st floor: 1268 sq. ft, 2nd floor: 1183 sq. ft
 EXCLUDED AREAS: BASEMENT: 116 sq. ft, STORAGE: 115 sq. ft, GARAGE: 483 sq. ft,
 PORCH: 196 sq. ft, PATIO: 1349 sq. ft, BALCONY: 87 sq. ft,
 OPEN TO BELOW: 25 sq. ft, STAIRWELL: 32 sq. ft, WALLS: 226 sq. ft

Floor Plan Created By V1photos.com. Measurements Deamed Highly Reliable But Not Guaranteed.



Disclaimer: Sizes and Dimensions are Approximate, Actual May Vary.



Ilan Brown
 720-480-7171
 ilan@rallyregroup.com

