

Parker Vista Beauty



 Single Family  2585 SQFT  5 Beds  3 Baths  3 Car  0.16 Acre

PROPERTY DETAILS

This is THE ONE you've been searching for! Situated along the top loop of Parker Vista near downtown Parker, this warm and inviting home features five generous bedrooms, three full bathrooms and multiple sunlit living and dining spaces. The secluded backyard is the perfect spot to relax or entertain under the covered patio and canopy of mature trees overlooking a tranquil water feature and quaint garden area. The three-car garage provides for ample parking, and the unfinished basement has the storage space for everything else. The fifth main level bedroom provides for an ideal office space with French doors and adjacent full bath. Gorgeous hardwood floors run throughout the main level, and newer neutral carpet expand throughout the second. Neutral color palette and thoughtfully added design features infuse the interior of this home with a calm aesthetic. Parker Vista features a large central community park with newer play equipment and trails. This quiet established neighborhood is within close proximity to Downtown Parker where you can explore farmer's markets, festivals, summer



Karen Hepp
720-987-6788
karenhepp@madisonprops.com
<https://www.karenhepphomes.com>

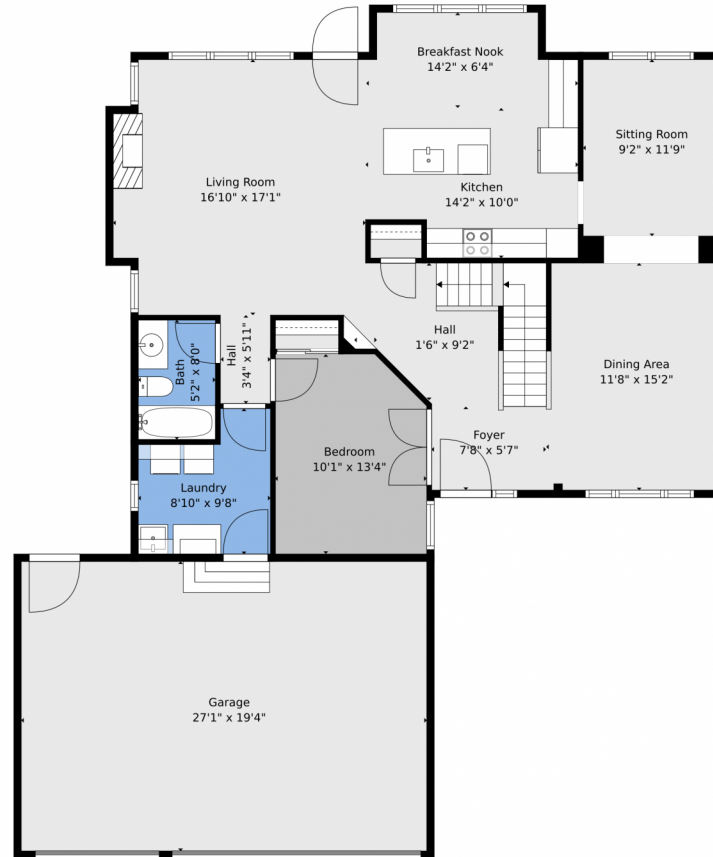


concerts, and exciting new restaurants and coffee shops within the new developments. This home defines "Pride of Ownership". Original owners have carefully curated tasteful updates throughout the home. Most recent updates include NEW IMPACT RESISTANT ROOF + GUTTERS | NEW CARPET | NEW EXTERIOR PAINT | NEW RADON MITIGATION SYSTEM | UPDATED KITCHEN | COVERED BACK PATIO AND DECK ...and so much more!



Karen Hepp
720-987-6788
karenhepp@madisonprops.com
<https://www.karenhepphomes.com>





TOTAL: 2497 sq. ft
Basement: 51 sq. ft, 1st floor: 1249 sq. ft, 2nd floor: 1197 sq. ft
EXCLUDED AREAS: BASEMENT: 428 sq. ft, GARAGE: 523 sq. ft, OPEN TO BELOW: 71 sq. ft,
WALLS: 240 sq. ft

Floor Plan Created By V1photos.com. Measurements Deamed Highly Reliable But Not Guaranteed.



Disclaimer: Sizes and Dimensions are Approximate, Actual May Vary.



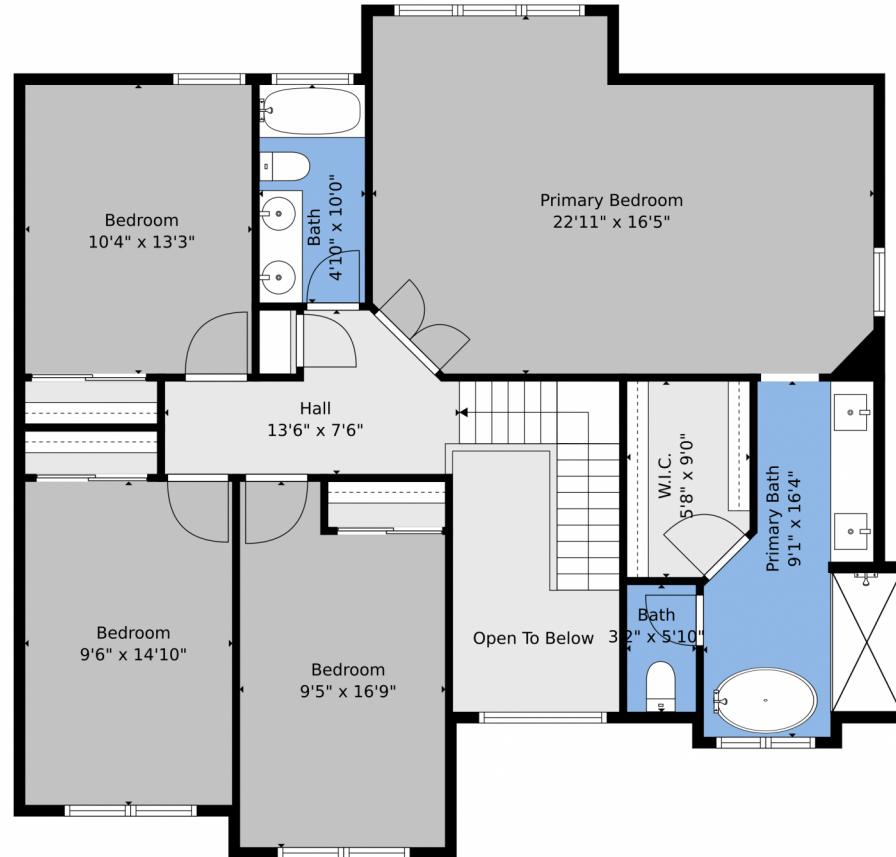
Karen Hepp
720-987-6788
karenhepp@madisonprops.com
<https://www.karenhepphomes.com>



Scan code
for more
property
details



20316 Vista Circle, Parker, CO 80138 – 2nd Level



TOTAL: 2497 sq. ft
Basement: 51 sq. ft, 1st floor: 1249 sq. ft, 2nd floor: 1197 sq. ft
EXCLUDED AREAS: BASEMENT: 428 sq. ft, GARAGE: 523 sq. ft, OPEN TO BELOW: 71 sq. ft,
WALLS: 240 sq. ft

Floor Plan Created By V1photos.com. Measurements Deamed Highly Reliable But Not Guaranteed.



Disclaimer: Sizes and Dimensions are Approximate, Actual May Vary.

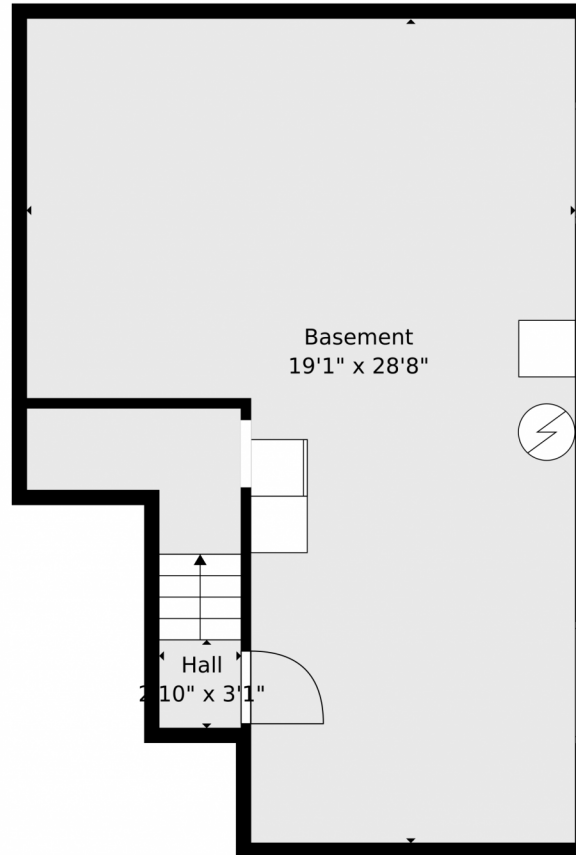


Karen Hepp
720-987-6788
karenhepp@madisonprops.com
<https://www.karenhepphomes.com>



Scan code
for more
property
details





TOTAL: 2497 sq. ft
Basement: 51 sq. ft, 1st floor: 1249 sq. ft, 2nd floor: 1197 sq. ft
EXCLUDED AREAS: BASEMENT: 428 sq. ft, GARAGE: 523 sq. ft, OPEN TO BELOW: 71 sq. ft,
WALLS: 240 sq. ft

Floor Plan Created By V1photos.com. Measurements Deamed Highly Reliable But Not Guaranteed.



Disclaimer: Sizes and Dimensions are Approximate, Actual May Vary.



Karen Hepp
720-987-6788
karenhepp@madisonprops.com
<https://www.karenhepphomes.com>



20316 Vista Circle, Parker, CO 80138 – All Levels



TOTAL: 2497 sq. ft
Basement: 51 sq. ft, 1st floor: 1249 sq. ft, 2nd floor: 1197 sq. ft
EXCLUDED AREAS: BASEMENT: 428 sq. ft, GARAGE: 523 sq. ft, OPEN TO BELOW: 71 sq. ft,
WALLS: 240 sq. ft

Floor Plan Created By V1photos.com. Measurements Deamed Highly Reliable But Not Guaranteed.



Disclaimer: Sizes and Dimensions are Approximate, Actual May Vary.



Karen Hepp
720-987-6788
karenhepp@madisonprops.com
<https://www.karenhepphomes.com>



Scan code
for more
property
details

