



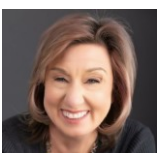
 Single Family  1928 SQFT  4 Beds  2 Baths  1 Car  0.16 Acre

## PROPERTY DETAILS

Handicapped Accessible Home – and one that fits your life from the very first morning.

Set on a rare 7,150 sq ft double lot in the heart of Harvey Park, this solid 1954 brick ranch offers the space, layout, and location that's genuinely hard to find at this price point in southwest Denver.

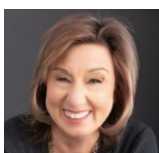
The accessible main level features three bedrooms and a full bath, filled with natural light through newer replacement windows. Downstairs, a private basement primary suite delivers real separation – egress windows, en-suite soaking tub, and the retreat you've been looking for. A rec room, dedicated laundry, and pantry round out the lower level, ready to flex into whatever comes next.



**Kati Harken**  
303-909-5990  
katiharken@kw.com  
<https://homesbykatiharken.kw.com/>



New solar transfers fully paid off at closing. Detached one-car garage plus covered canopy. A double lot with deck, pergola, and room for the garden, the dog, the fire pit, and the summer evenings that make it all worthwhile. Walk to Harvey Park Lake, Denver Recreation Center, outdoor pool, and tennis courts. Downtown Denver in under 15 minutes. Mountains every weekend via Highway 285. Solid bones. Smart upgrades. A neighborhood that delivers.



**Kati Harken**  
303-909-5990  
katiharken@kw.com  
<https://homesbykatiharken.kw.com/>



# 1982 S Wolcott Ct, Denver, CO 80219 – All Levels



**TOTAL: 1712 sq. ft**  
1st floor: 823 sq. ft, 2nd floor: 889 sq. ft  
EXCLUDED AREAS: STORAGE: 66 sq. ft, GARAGE: 299 sq. ft, PORCH: 199 sq. ft,  
PATIO: 392 sq. ft, DECK: 353 sq. ft, BAY WINDOW: 12 sq. ft,  
WALLS: 160 sq. ft

Floor Plan Created By V1photos.com. Measurements Deamed Highly Reliable But Not Guaranteed.



Disclaimer: Sizes and Dimensions are Approximate, Actual May Vary.



**Kati Harken**  
303-909-5990  
katiharken@kw.com  
<https://homesbykatiharken.kw.com/>

