

1699 Rivergate Way
Berthoud, CO 80513
COMMUNITY: Vantage

PRICE \$729,000



 Single Family  4300 SQFT  4 Beds  3 Baths  3 Car  0.26 Acre

PROPERTY DETAILS

Assumable 4.5% VA loan for qualified vets! The seller will assist non-vets with a rate buy down. Don't miss this beautiful ranch home in Berthoud. The finished basement features a large rec space, 4th bedroom, bath, and storage. Enjoy a fully fenced backyard with a garden bed, patio, and grilling area. The spacious 3-car garage is perfect for your projects. Inside, the home is bright and open with modern upgrades. The gourmet kitchen boasts double ovens, stainless appliances, quartz countertops, and a walk-in pantry. Enjoy stunning views from the porch and backyard in a community with a pool, splash pad, playgrounds, dog parks, and trails. Convenient access to Longmont, Boulder, and Fort Collins.



Kelly Campbell
303-601-9842
kellcampbell@msn.com



1699 Rivergate Way, Berthoud, CO 80513 — Main



TOTAL: 3600 sq. ft
Basement: 1462 sq. ft, 1st floor: 2138 sq. ft
EXCLUDED AREAS: BASEMENT: 541 sq. ft, STORAGE: 135 sq. ft, GARAGE: 698 sq. ft,
PATIO: 157 sq. ft, PORCH: 134 sq. ft, WALLS: 271 sq. ft

Floor Plan Created By V1photos.com. Measurements Deamed Highly Reliable But Not Guaranteed.



Disclaimer: Sizes and Dimensions are Approximate, Actual May Vary.



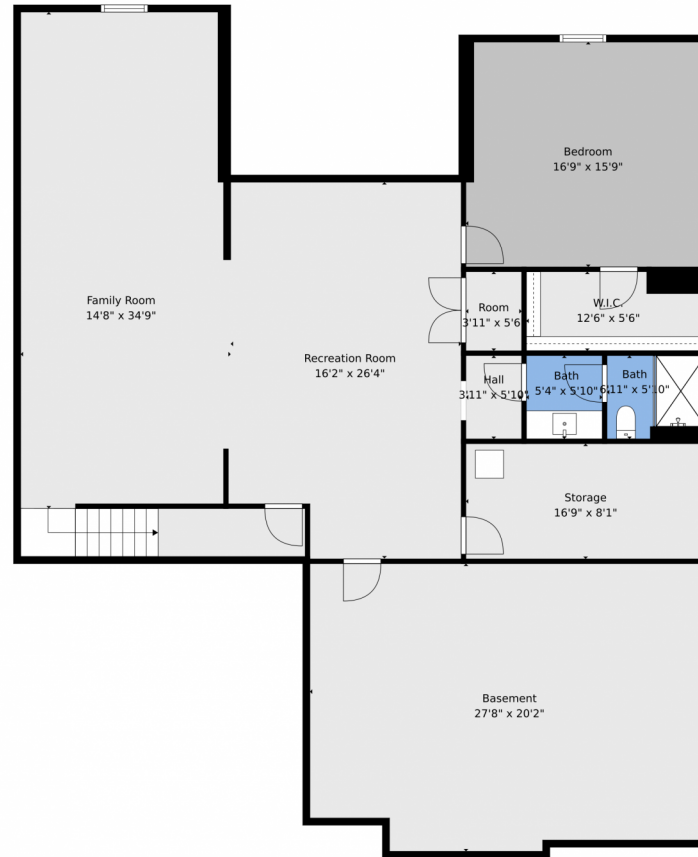
Kelly Campbell
303-601-9842
kellcampbell@msn.com



Scan code
for more
property
details



1699 Rivergate Way, Berthoud, CO 80513 – Lower Level



TOTAL: 3600 sq. ft
Basement: 1462 sq. ft, 1st floor: 2138 sq. ft
EXCLUDED AREAS: BASEMENT: 541 sq. ft, STORAGE: 135 sq. ft, GARAGE: 698 sq. ft,
PATIO: 157 sq. ft, PORCH: 134 sq. ft, WALLS: 271 sq. ft

Floor Plan Created By V1photos.com. Measurements Deamed Highly Reliable But Not Guaranteed.



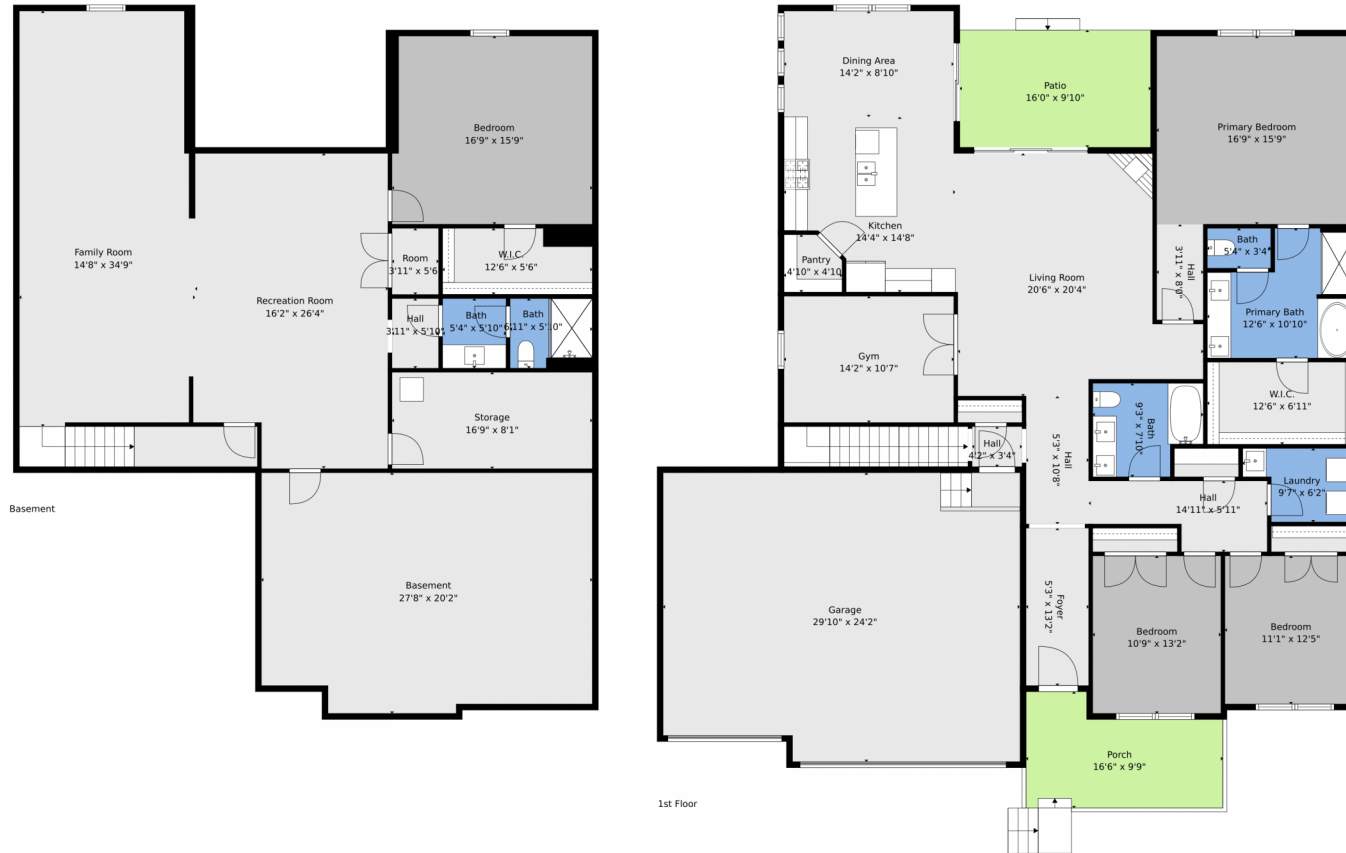
Disclaimer: Sizes and Dimensions are Approximate, Actual May Vary.



Kelly Campbell
303-601-9842
kellcampbell@msn.com



1699 Rivergate Way, Berthoud, CO 80513 – All Levels



TOTAL: 3600 sq. ft
 Basement: 1462 sq. ft, 1st floor: 2138 sq. ft
 EXCLUDED AREAS: BASEMENT: 541 sq. ft, STORAGE: 135 sq. ft, GARAGE: 698 sq. ft,
 PATIO: 157 sq. ft, PORCH: 134 sq. ft, WALLS: 271 sq. ft

Floor Plan Created By V1photos.com. Measurements Deamed Highly Reliable But Not Guaranteed.



Disclaimer: Sizes and Dimensions are Approximate, Actual May Vary.



Kelly Campbell
 303-601-9842
 kellcampbell@msn.com



Scan code
 for more
 property
 details

