





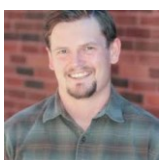


6630 Blue Spruce Street
Frederick, CO 80530
COMMUNITY: Carriage Hills

MLS # 9445355
PRICE \$600,000



 Single Family  3107 SQFT  6 Beds  3/1 Baths  3 Car  0.21 Acre



Keefe Gray
303-842-7288
keefeisgray@gmail.com





TOTAL: 2836 sq. ft
Basement: 762 sq. ft, 1st floor: 841 sq. ft, 2nd floor: 1233 sq. ft
EXCLUDED AREAS: UTILITY: 43 sq. ft, GARAGE: 572 sq. ft, PORCH: 121 sq. ft,
DECK: 481 sq. ft, PATIO: 393 sq. ft, OPEN TO BELOW: 38 sq. ft,
WALLS: 251 sq. ft

Floor Plan Created By V1photos.com. Measurements Deamed Highly Reliable But Not Guaranteed.



Disclaimer: Sizes and Dimensions are Approximate, Actual May Vary.



Keefe Gray
303-842-7288
keefeisgray@gmail.com



6630 Blue Spruce Street, Frederick, CO 80530 – 2nd Level



TOTAL: 2836 sq. ft
Basement: 762 sq. ft, 1st floor: 841 sq. ft, 2nd floor: 1233 sq. ft
EXCLUDED AREAS: UTILITY: 43 sq. ft, GARAGE: 572 sq. ft, PORCH: 121 sq. ft,
DECK: 481 sq. ft, PATIO: 393 sq. ft, OPEN TO BELOW: 38 sq. ft,
WALLS: 251 sq. ft

Floor Plan Created By V1photos.com. Measurements Deamed Highly Reliable But Not Guaranteed.



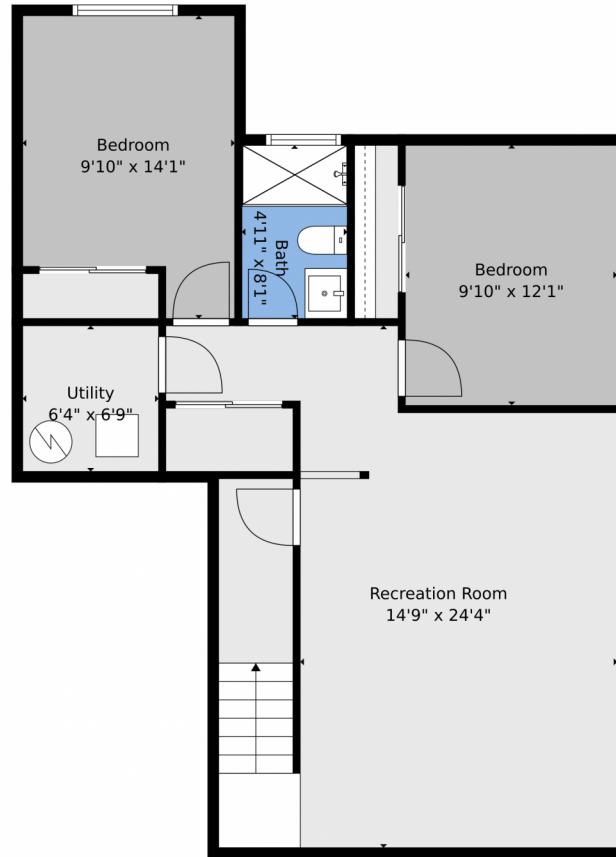
Disclaimer: Sizes and Dimensions are Approximate, Actual May Vary.



Keefe Gray
303-842-7288
keefeisgray@gmail.com



6630 Blue Spruce Street, Frederick, CO 80530 – Lower Level



TOTAL: 2836 sq. ft

Basement: 762 sq. ft, 1st floor: 841 sq. ft, 2nd floor: 1233 sq. ft
EXCLUDED AREAS: UTILITY: 43 sq. ft, GARAGE: 572 sq. ft, PORCH: 121 sq. ft,
DECK: 481 sq. ft, PATIO: 393 sq. ft, OPEN TO BELOW: 38 sq. ft,
WALLS: 251 sq. ft

Floor Plan Created By V1photos.com. Measurements Deamed Highly Reliable But Not Guaranteed.



Disclaimer: Sizes and Dimensions are Approximate, Actual May Vary.



Keefe Gray
303-842-7288
keefeisgray@gmail.com



6630 Blue Spruce Street, Frederick, CO 80530 – All Levels



TOTAL: 2836 sq. ft
Basement: 762 sq. ft, 1st floor: 841 sq. ft, 2nd floor: 1233 sq. ft
EXCLUDED AREAS: UTILITY: 43 sq. ft, GARAGE: 572 sq. ft, PORCH: 121 sq. ft,
DECK: 481 sq. ft, PATIO: 393 sq. ft, OPEN TO BELOW: 38 sq. ft,
WALLS: 251 sq. ft

Floor Plan Created By V1photos.com. Measurements Deamed Highly Reliable But Not Guaranteed.



Disclaimer: Sizes and Dimensions are Approximate, Actual May Vary.



Keefe Gray
303-842-7288
keefeisgray@gmail.com



Scan code
for more
property
details

