

1311 Conifer Place
Elizabeth, CO 80107
COMMUNITY: Singing Hills



Single Family



3180 SQFT



5 Beds



3/1 Baths



2 Car



0.3 Acre



Andrea Bunker Marrese
303-870-2689
bunkerandrea@aol.com



Scan code
for more
property
details



1311 Conifer Place, Elizabeth, CO 80107 – Lower Level



TOTAL: 2825 sq. ft
Basement: 1304 sq. ft, 1st floor: 1521 sq. ft
EXCLUDED AREAS: STORAGE: 68 sq. ft, UTILITY: 120 sq. ft, PATIO: 968 sq. ft,
GARAGE: 554 sq. ft, DECK: 207 sq. ft, PORCH: 115 sq. ft,
OPEN TO BELOW: 3 sq. ft, BAY WINDOW: 4 sq. ft, WALLS: 224 sq. ft

Floor Plan Created By V1photos.com. Measurements Deamed Highly Reliable But Not Guaranteed.

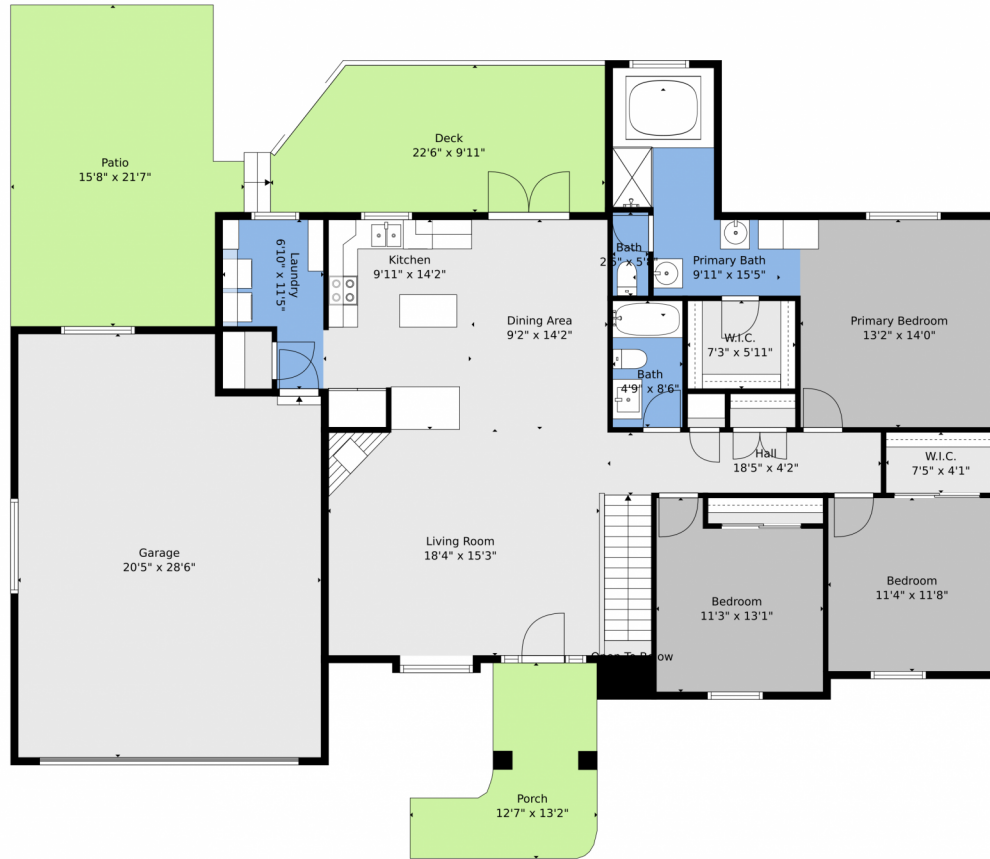
Disclaimer: Sizes and Dimensions are Approximate, Actual May Vary.



Andrea Bunker Marrese
303-870-2689
bunkerandrea@aol.com



1311 Conifer Place, Elizabeth, CO 80107 – Main level



TOTAL: 2825 sq. ft
Basement: 1304 sq. ft, 1st floor: 1521 sq. ft
EXCLUDED AREAS: STORAGE: 68 sq. ft, UTILITY: 120 sq. ft, PATIO: 968 sq. ft,
GARAGE: 554 sq. ft, DECK: 207 sq. ft, PORCH: 115 sq. ft,
OPEN TO BELOW: 3 sq. ft, BAY WINDOW: 4 sq. ft, WALLS: 224 sq. ft

Floor Plan Created By V1photos.com. Measurements Deamed Highly Reliable But Not Guaranteed.



Disclaimer: Sizes and Dimensions are Approximate, Actual May Vary.



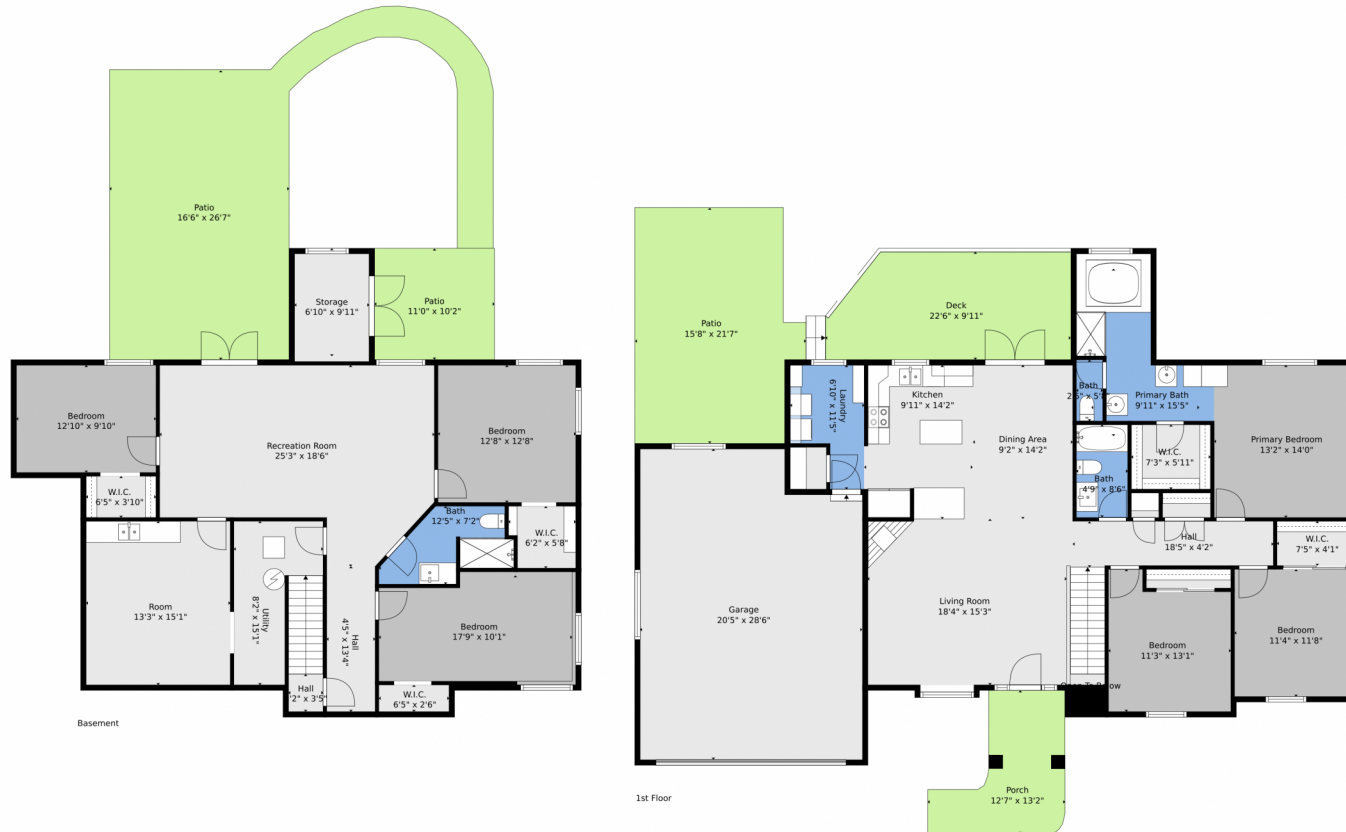
Andrea Bunker Marrese
303-870-2689
bunkerandrea@aol.com



Scan code
for more
property
details



1311 Conifer Place, Elizabeth, CO 80107 – All Levels



TOTAL: 2825 sq. ft
 Basement: 1304 sq. ft, 1st floor: 1521 sq. ft
 EXCLUDED AREAS: STORAGE: 68 sq. ft, UTILITY: 120 sq. ft, PATIO: 968 sq. ft,
 GARAGE: 554 sq. ft, DECK: 207 sq. ft, PORCH: 115 sq. ft,
 OPEN TO BELOW: 3 sq. ft, BAY WINDOW: 4 sq. ft, WALLS: 224 sq. ft

Floor Plan Created By V1photos.com. Measurements Deamed Highly Reliable But Not Guaranteed.



Disclaimer: Sizes and Dimensions are Approximate, Actual May Vary.



Andrea Bunker Marrese
 303-870-2689
 bunkerandrea@aol.com



Scan code
 for more
 property
 details

