


21765 Westmont Court
Boca Raton, FL 33428
COMMUNITY: Boca Falls



 Single Family

 3300 SQFT

 5 Beds

 3 Baths

 3 Car

Rebecca Levine
516-987-5884
Lnrealtor3@gmail.com



21765 Westmont Court, Boca Raton, FL 33428 – Main



TOTAL: 3014 sq. ft

1st floor: 2098 sq. ft, 2nd floor: 916 sq. ft

EXCLUDED AREAS: GARAGE: 411 sq. ft, STORAGE: 171 sq. ft, SCREENED PORCH: 377 sq. ft,
PORCH: 96 sq. ft, PATIO: 763 sq. ft, OPEN TO BELOW: 104 sq. ft,
WALLS: 262 sq. ft

Floor Plan Created By V1photos.com. Measurements Deamed Highly Reliable But Not Guaranteed.



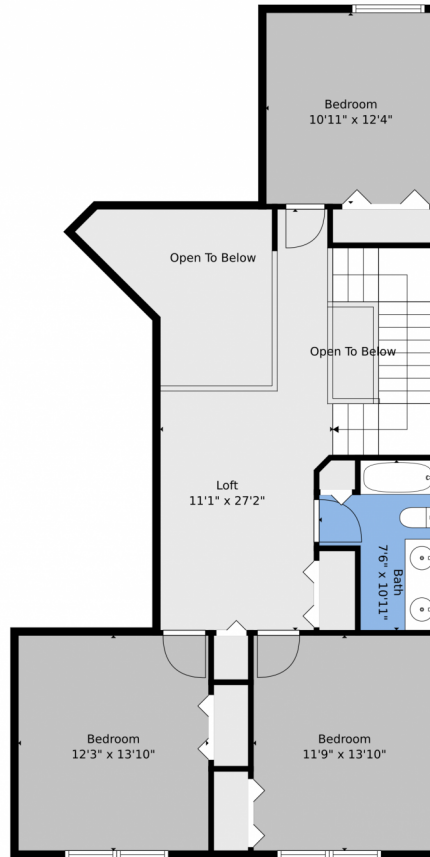
Disclaimer: Sizes and Dimensions are Approximate, Actual May Vary.

Rebecca Levine
516-987-5884
Lnrealtor3@gmail.com

Scan code
for more
property
details



21765 Westmont Court, Boca Raton, FL 33428 – 2nd Level



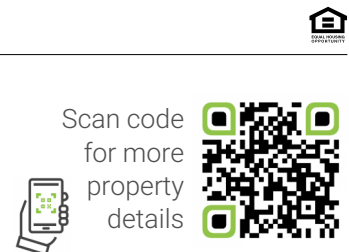
TOTAL: 3014 sq. ft
1st floor: 2098 sq. ft, 2nd floor: 916 sq. ft
EXCLUDED AREAS: GARAGE: 411 sq. ft, STORAGE: 171 sq. ft, SCREENED PORCH: 377 sq. ft,
PORCH: 96 sq. ft, PATIO: 763 sq. ft, OPEN TO BELOW: 104 sq. ft,
WALLS: 262 sq. ft

Floor Plan Created By V1photos.com. Measurements Deamed Highly Reliable But Not Guaranteed.



Disclaimer: Sizes and Dimensions are Approximate, Actual May Vary.

Rebecca Levine
516-987-5884
Lnrealtor3@gmail.com



21765 Westmont Court, Boca Raton, FL 33428 – All Levels



TOTAL: 3014 sq. ft
1st floor: 2098 sq. ft, 2nd floor: 916 sq. ft
EXCLUDED AREAS: GARAGE: 411 sq. ft, STORAGE: 171 sq. ft, SCREENED PORCH: 377 sq. ft,
PORCH: 96 sq. ft, PATIO: 763 sq. ft, OPEN TO BELOW: 104 sq. ft,
WALLS: 262 sq. ft

Floor Plan Created By V1photos.com. Measurements Deamed Highly Reliable But Not Guaranteed.



Disclaimer: Sizes and Dimensions are Approximate, Actual May Vary.

Rebecca Levine
516-987-5884
Lnrealtor3@gmail.com

Scan code
for more
property
details

