



1416 NW Leonardo Circle
 Port St Lucie, FL 34986
 COMMUNITY: VIZCAYA FALLS PLAT 1

MLS # B26011522
 PRICE \$499,999



Single Family



3543 SQFT



4 Beds



2/1 Baths



2 Car



0.14 Acre

PROPERTY DETAILS

This 4-bedroom, 2.5-bath home with a 2-car garage has all bedrooms upstairs and a separate living area. The main floor includes two flexible spaces for an office or dining. The exterior was painted less than 2 years ago. The kitchen features granite countertops, modern cabinetry, new appliances, and an eat-in area that opens to the living space. Upstairs has vinyl flooring throughout. The backyard boasts a saltwater pool and a large screened deck, perfect for relaxing or entertaining. The home is within walking distance to a clubhouse, community pool with a splash pad, tennis, basketball, and volleyball courts, as well as a nearby boat ramp, fishing lake, and sandy beach.

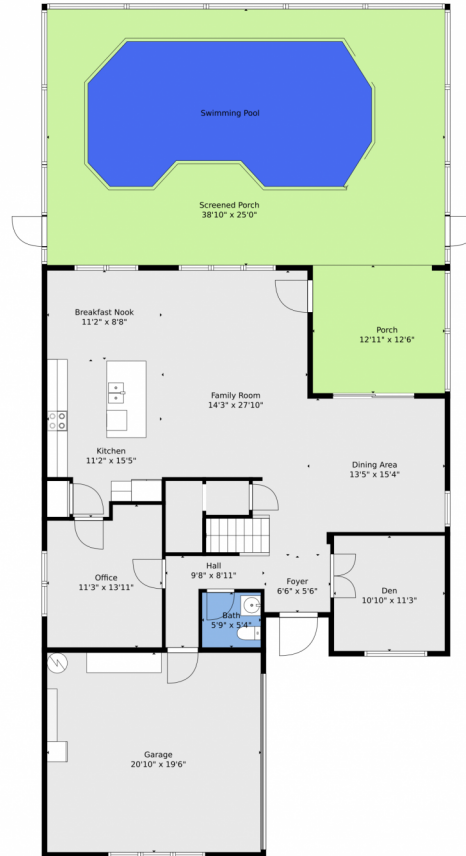


Patrick Beert
 772-882-5492
 patrickbeertrealtor@gmail.com



Scan code
 for more
 property
 details





TOTAL: 2682 sq. ft
1st floor: 1240 sq. ft, 2nd floor: 1442 sq. ft
EXCLUDED AREAS: GARAGE: 406 sq. ft, SCREENED PORCH: 624 sq. ft, PORCH: 161 sq. ft,
WALLS: 240 sq. ft

Floor Plan Created By V1photos.com. Measurements Deamed Highly Reliable But Not Guaranteed.



Disclaimer: Sizes and Dimensions are Approximate, Actual May Vary.



Patrick Beert
772-882-5492
patrickbeertrealtor@gmail.com



Scan code
for more
property
details



TOTAL: 2682 sq. ft
1st floor: 1240 sq. ft, 2nd floor: 1442 sq. ft
EXCLUDED AREAS: GARAGE: 406 sq. ft, SCREENED PORCH: 624 sq. ft, PORCH: 161 sq. ft,
WALLS: 240 sq. ft

Floor Plan Created By V1photos.com. Measurements Deamed Highly Reliable But Not Guaranteed.



Disclaimer: Sizes and Dimensions are Approximate, Actual May Vary.



Patrick Beert
772-882-5492
patrickbeertrealtor@gmail.com



1416 NW Leonardo Circle, Port St Lucie, FL 34986 — floorplan_all_0



TOTAL: 2682 sq. ft
1st floor: 1240 sq. ft, 2nd floor: 1442 sq. ft
EXCLUDED AREAS: GARAGE: 406 sq. ft, SCREENED PORCH: 624 sq. ft, PORCH: 161 sq. ft,
WALLS: 240 sq. ft

Floor Plan Created By V1photos.com. Measurements Deamed Highly Reliable But Not Guaranteed.



Disclaimer: Sizes and Dimensions are Approximate, Actual May Vary.



Patrick Beert
772-882-5492
patrickbeertrealtor@gmail.com

