

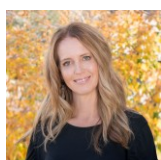
Lower Level



Single Family 1353 SQFT 3 Beds 2 Baths 2 Car 0.09 Acre

PROPERTY DETAILS

This stunning tri-level Sundance home is located on a quiet street near open space, trails, and the Louisville Rec Center. Just under a mile from Downtown Louisville, Davison Mesa, Harper Lake, and Fireside Elementary, it offers a fantastic location. The main and lower levels feature beautiful hardwood floors, vaulted ceilings, and large windows that fill the space with natural light. The elegant kitchen includes quartz counters, a glass tile backsplash, and stainless steel appliances, with a cozy family room that has a wood-burning fireplace. The floor plan includes three bedrooms and two full baths, with a primary suite that boasts a private bath and walk-in closet. The spacious deck and lush backyard are perfect for gatherings. An attached two-car garage provides ample storage. This home is ready for you to add your personal touch.



Terri Ellerington

303-929-8116

terri@elevated-team.com

<https://www.remax.com/real-estate-agents/terri-ellerington-louisville-co/10205130>

Scan code
for more
property
details

