



4031 Burton Street  
 Strasburg, CO 80136  
 COMMUNITY: Wolf Creek Farms

PRICE \$839,900



Single Family



3857 SQFT



3 Beds



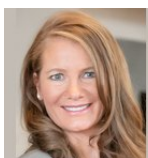
3/1 Baths



4 Car



2.77 Acre



**Christina Kern**  
 303-915-0809  
 ckernsells@gmail.com  
<https://christinakern.com/>



Scan code  
 for more  
 property  
 details





**TOTAL: 3359 sq. ft**

Basement: 1513 sq. ft, 1st floor: 1846 sq. ft, 2nd floor: 0 sq. ft, 3rd floor: 0 sq. ft  
EXCLUDED AREAS: UTILITY: 215 sq. ft, GARAGE: 2296 sq. ft, PATIO: 736 sq. ft,  
PORCH: 345 sq. ft, BAY WINDOW: 13 sq. ft, WORKSHOP: 539 sq. ft,  
OPEN TO BELOW: 1325 sq. ft, STORAGE: 603 sq. ft, WALLS: 467 sq. ft

Floor Plan Created By V1photos.com. Measurements Deamed Highly Reliable But Not Guaranteed.



Disclaimer: Sizes and Dimensions are Approximate, Actual May Vary.



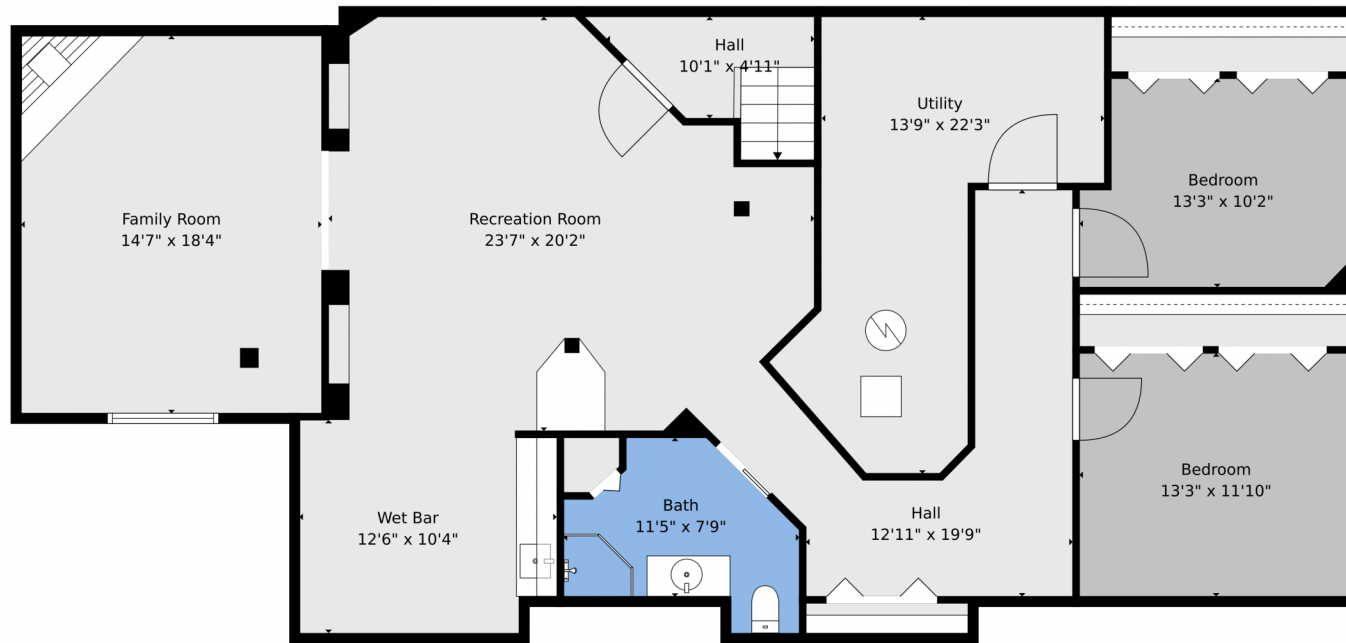
**Christina Kern**  
303-915-0809  
ckernsells@gmail.com  
<https://christinakern.com/>



Scan code  
for more  
property  
details



4031 Burton Street, Strasburg, CO 80136 – Basement



**TOTAL: 3359 sq. ft**

Basement: 1513 sq. ft, 1st floor: 1846 sq. ft, 2nd floor: 0 sq. ft, 3rd floor: 0 sq. ft  
EXCLUDED AREAS: UTILITY: 215 sq. ft, GARAGE: 2296 sq. ft, PATIO: 736 sq. ft,  
PORCH: 345 sq. ft, BAY WINDOW: 13 sq. ft, WORKSHOP: 539 sq. ft,  
OPEN TO BELOW: 1325 sq. ft, STORAGE: 603 sq. ft, WALLS: 467 sq. ft

Floor Plan Created By V1photos.com. Measurements Deamed Highly Reliable But Not Guaranteed.



Disclaimer: Sizes and Dimensions are Approximate, Actual May Vary.



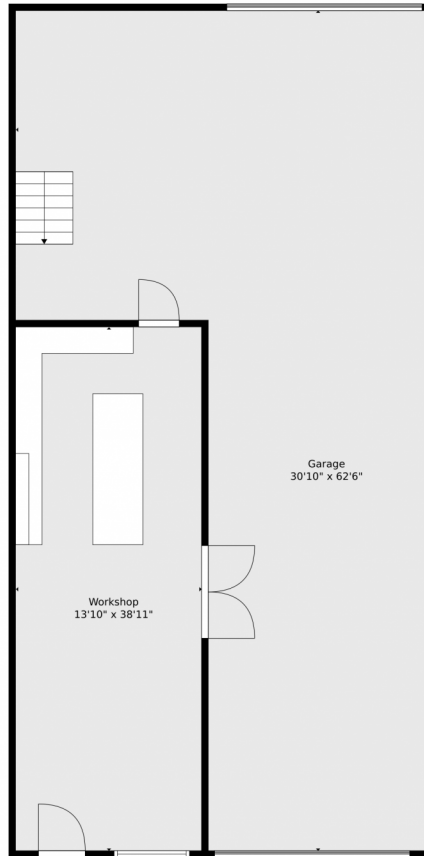
**Christina Kern**  
303-915-0809  
ckernsells@gmail.com  
<https://christinakern.com/>



Scan code  
for more  
property  
details



# 4031 Burton Street, Strasburg, CO 80136 – Detached Garage



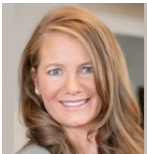
**TOTAL: 3359 sq. ft**

Basement: 1513 sq. ft, 1st floor: 1846 sq. ft, 2nd floor: 0 sq. ft, 3rd floor: 0 sq. ft  
EXCLUDED AREAS: UTILITY: 215 sq. ft, GARAGE: 2296 sq. ft, PATIO: 736 sq. ft,  
PORCH: 345 sq. ft, BAY WINDOW: 13 sq. ft, WORKSHOP: 539 sq. ft,  
OPEN TO BELOW: 1325 sq. ft, STORAGE: 603 sq. ft, WALLS: 467 sq. ft

Floor Plan Created By V1photos.com. Measurements Deamed Highly Reliable But Not Guaranteed.



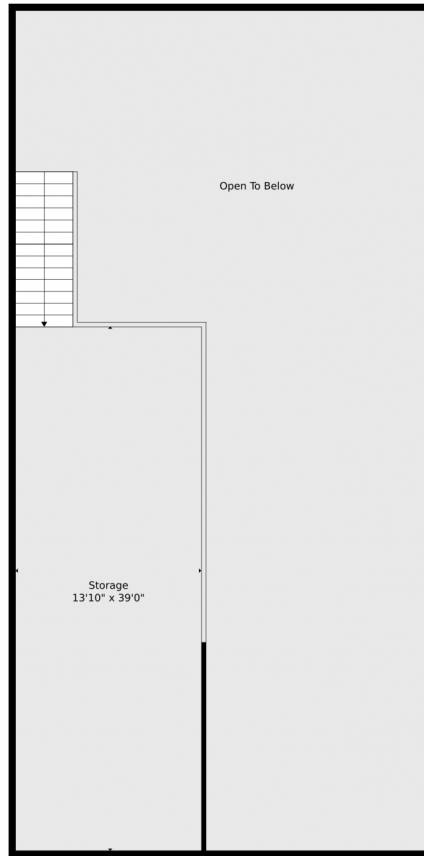
Disclaimer: Sizes and Dimensions are Approximate, Actual May Vary.



**Christina Kern**  
303-915-0809  
ckernsells@gmail.com  
<https://christinakern.com/>



# 4031 Burton Street, Strasburg, CO 80136 – Detached Garage



**TOTAL: 3359 sq. ft**

Basement: 1513 sq. ft, 1st floor: 1846 sq. ft, 2nd floor: 0 sq. ft, 3rd floor: 0 sq. ft  
EXCLUDED AREAS: UTILITY: 215 sq. ft, GARAGE: 2296 sq. ft, PATIO: 736 sq. ft,  
PORCH: 345 sq. ft, BAY WINDOW: 13 sq. ft, WORKSHOP: 539 sq. ft,  
OPEN TO BELOW: 1325 sq. ft, STORAGE: 603 sq. ft, WALLS: 467 sq. ft

Floor Plan Created By V1photos.com. Measurements Deamed Highly Reliable But Not Guaranteed.



Disclaimer: Sizes and Dimensions are Approximate, Actual May Vary.



**Christina Kern**  
303-915-0809  
ckernsells@gmail.com  
<https://christinakern.com/>



# 4031 Burton Street, Strasburg, CO 80136 – All Levels



**TOTAL: 3359 sq. ft**  
 Basement: 1513 sq. ft, 1st floor: 1846 sq. ft, 2nd floor: 0 sq. ft, 3rd floor: 0 sq. ft  
 EXCLUDED AREAS: UTILITY: 215 sq. ft, GARAGE: 2296 sq. ft, PATIO: 736 sq. ft,  
 PORCH: 345 sq. ft, BAY WINDOW: 13 sq. ft, WORKSHOP: 539 sq. ft,  
 OPEN TO BELOW: 1325 sq. ft, STORAGE: 603 sq. ft, WALLS: 467 sq. ft

Floor Plan Created By V1photos.com. Measurements Deamed Highly Reliable But Not Guaranteed.



Disclaimer: Sizes and Dimensions are Approximate, Actual May Vary.



**Christina Kern**  
 303-915-0809  
 ckernsells@gmail.com  
<https://christinakern.com/>

