



153 Sunbeam Court  
 Erie, CO 80516  
 COMMUNITY: Colliers hill

MLS # 4942704

PRICE

\$1,000,000



Single Family



5303 SQFT



6 Beds



5 Baths



3 Car



0.2 Acre

## PROPERTY DETAILS

Professional photos to come. Showings start April 16th. This well-maintained home is in a desirable community with great amenities, including a pool and clubhouse. It's located on a quiet cul-de-sac, ensuring privacy and low traffic. Nearby, you'll find a park and bus stop for convenience.

The home features a main-level in-law suite and a finished basement with an extra bedroom and bathroom, perfect for guests or multi-generational living. The 3-car garage offers ample storage.

The kitchen boasts a butler's pantry and gas range, ideal for cooking. Enjoy the low-maintenance back porch with pet-friendly turf. Embrace an active lifestyle with nearby trails and parks. Inside, relax in the spacious entertainment room or yoga space.

Additional features include a newer tankless water heater and a 2023 roof replacement. This home is a must-see!



**Karla Goodman Pastore**  
 303-525-5198  
 ColoradoKarla@proton.me



Scan code  
 for more  
 property  
 details



# 153 Sunbeam Court, Erie, CO 80516 — Main



**TOTAL: 4713 sq. ft**  
Basement: 1222 sq. ft, 1st floor: 1651 sq. ft, 2nd floor: 1840 sq. ft  
EXCLUDED AREAS: STORAGE: 78 sq. ft, UTILITY: 171 sq. ft, GARAGE: 708 sq. ft,  
PORCH: 126 sq. ft, COVERED PATIO: 145 sq. ft, OPEN TO BELOW: 50 sq. ft,  
WALLS: 325 sq. ft

Floor Plan Created By V1photos.com. Measurements Deamed Highly Reliable But Not Guaranteed.



Disclaimer: Sizes and Dimensions are Approximate, Actual May Vary.



**Karla Goodman Pastore**  
303-525-5198  
ColoradoKarla@proton.me



# 153 Sunbeam Court, Erie, CO 80516 – 2nd Level



**TOTAL: 4713 sq. ft**

Basement: 1222 sq. ft, 1st floor: 1651 sq. ft, 2nd floor: 1840 sq. ft  
EXCLUDED AREAS: STORAGE: 78 sq. ft, UTILITY: 171 sq. ft, GARAGE: 708 sq. ft,  
PORCH: 126 sq. ft, COVERED PATIO: 145 sq. ft, OPEN TO BELOW: 50 sq. ft,  
WALLS: 325 sq. ft

Floor Plan Created By V1photos.com. Measurements Deamed Highly Reliable But Not Guaranteed.



Disclaimer: Sizes and Dimensions are Approximate, Actual May Vary.

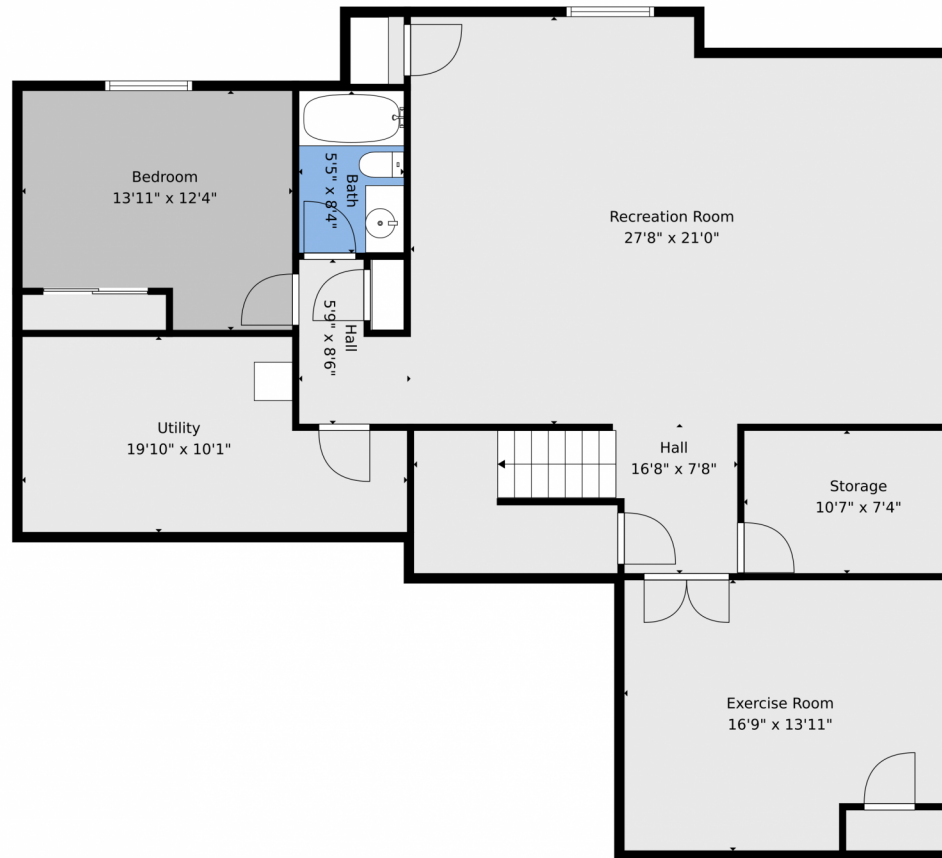


**Karla Goodman Pastore**  
303-525-5198  
ColoradoKarla@proton.me



Scan code  
for more  
property  
details

# 153 Sunbeam Court, Erie, CO 80516 — Basement



**TOTAL: 4713 sq. ft**

Basement: 1222 sq. ft, 1st floor: 1651 sq. ft, 2nd floor: 1840 sq. ft  
EXCLUDED AREAS: STORAGE: 78 sq. ft, UTILITY: 171 sq. ft, GARAGE: 708 sq. ft,  
PORCH: 126 sq. ft, COVERED PATIO: 145 sq. ft, OPEN TO BELOW: 50 sq. ft,  
WALLS: 325 sq. ft

Floor Plan Created By V1photos.com. Measurements Deamed Highly Reliable But Not Guaranteed.



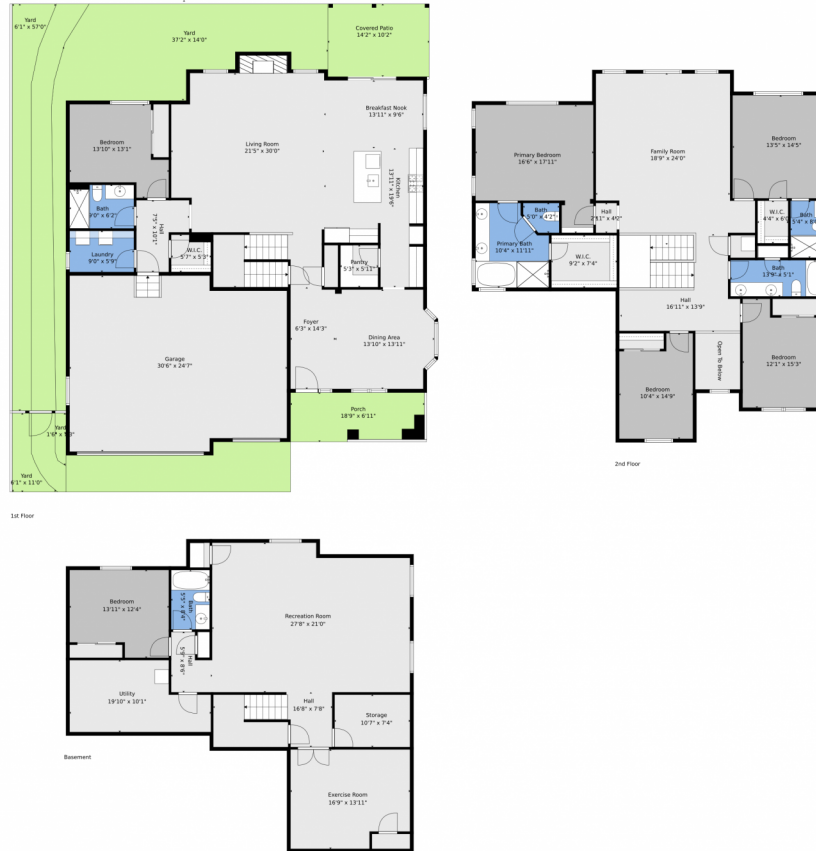
Disclaimer: Sizes and Dimensions are Approximate, Actual May Vary.



**Karla Goodman Pastore**  
303-525-5198  
ColoradoKarla@proton.me



# 153 Sunbeam Court, Erie, CO 80516 – All Levels



**TOTAL: 4713 sq. ft**  
Basement: 1222 sq. ft, 1st floor: 1651 sq. ft, 2nd floor: 1840 sq. ft  
EXCLUDED AREAS: STORAGE: 78 sq. ft, UTILITY: 171 sq. ft, GARAGE: 708 sq. ft,  
PORCH: 126 sq. ft, COVERED PATIO: 145 sq. ft, OPEN TO BELOW: 50 sq. ft,  
WALLS: 325 sq. ft

Floor Plan Created By V1photos.com. Measurements Deamed Highly Reliable But Not Guaranteed.



Disclaimer: Sizes and Dimensions are Approximate, Actual May Vary.



**Karla Goodman Pastore**  
303-525-5198  
ColoradoKarla@proton.me

