



Single Family



3020 SQFT



4 Beds



2/1 Baths



2 Car



Paul D. Andrews

720-270-1306

andrews.realtor@gmail.com

<https://www.greaterdenverhomesite.com/paul-andrews/>



Scan code
for more
property
details



4613 Hyland Greens Place, Westminster, CO 80031 — Main Level



TOTAL: 3095 sq. ft

Basement: 997 sq. ft, 1st floor: 2098 sq. ft

EXCLUDED AREAS: UTILITY: 305 sq. ft, COURTYARD: 211 sq. ft, COVERED PATIO: 189 sq. ft,
GARAGE: 419 sq. ft, BALCONY: 176 sq. ft, PORCH: 37 sq. ft,
WALLS: 249 sq. ft

Floor Plan Created By V1photos.com. Measurements Deamed Highly Reliable But Not Guaranteed.



Disclaimer: Sizes and Dimensions are Approximate, Actual May Vary.



Paul D. Andrews

720-270-1306

andrews.realtor@gmail.com

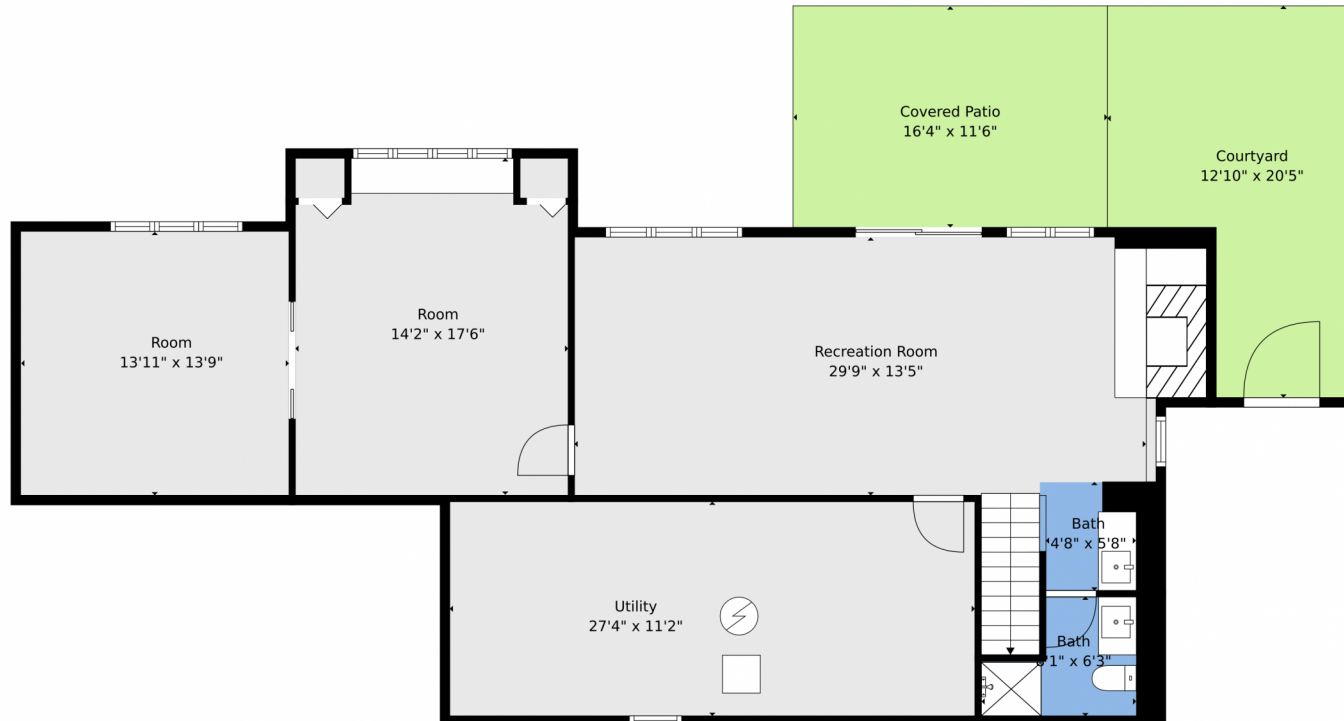
<https://www.greaterdenverhomesite.com/paul-andrews/>



Scan code
for more
property
details



4613 Hyland Greens Place, Westminster, CO 80031 — Lower Level



TOTAL: 3095 sq. ft
Basement: 997 sq. ft, 1st floor: 2098 sq. ft
EXCLUDED AREAS: UTILITY: 305 sq. ft, COURTYARD: 211 sq. ft, COVERED PATIO: 189 sq. ft,
GARAGE: 419 sq. ft, BALCONY: 176 sq. ft, PORCH: 37 sq. ft,
WALLS: 249 sq. ft

Floor Plan Created By V1photos.com. Measurements Deamed Highly Reliable But Not Guaranteed.



Disclaimer: Sizes and Dimensions are Approximate, Actual May Vary.



Paul D. Andrews
720-270-1306
andrews.realtor@gmail.com
<https://www.greaterdenverhomesite.com/paul-andrews/>



4613 Hyland Greens Place, Westminster, CO 80031 – All Levels



TOTAL: 3095 sq. ft
Basement: 997 sq. ft, 1st floor: 2098 sq. ft
EXCLUDED AREAS: UTILITY: 305 sq. ft, COURTYARD: 211 sq. ft, COVERED PATIO: 189 sq. ft,
GARAGE: 419 sq. ft, BALCONY: 176 sq. ft, PORCH: 37 sq. ft,
WALLS: 249 sq. ft

Floor Plan Created By V1photos.com. Measurements Deamed Highly Reliable But Not Guaranteed.



Disclaimer: Sizes and Dimensions are Approximate, Actual May Vary.



Paul D. Andrews
720-270-1306
andrews.realtor@gmail.com
<https://www.greaterdenverhomesite.com/paul-andrews/>

