



Single Family



1656 SQFT



3 Beds



2/1 Baths



2 Car

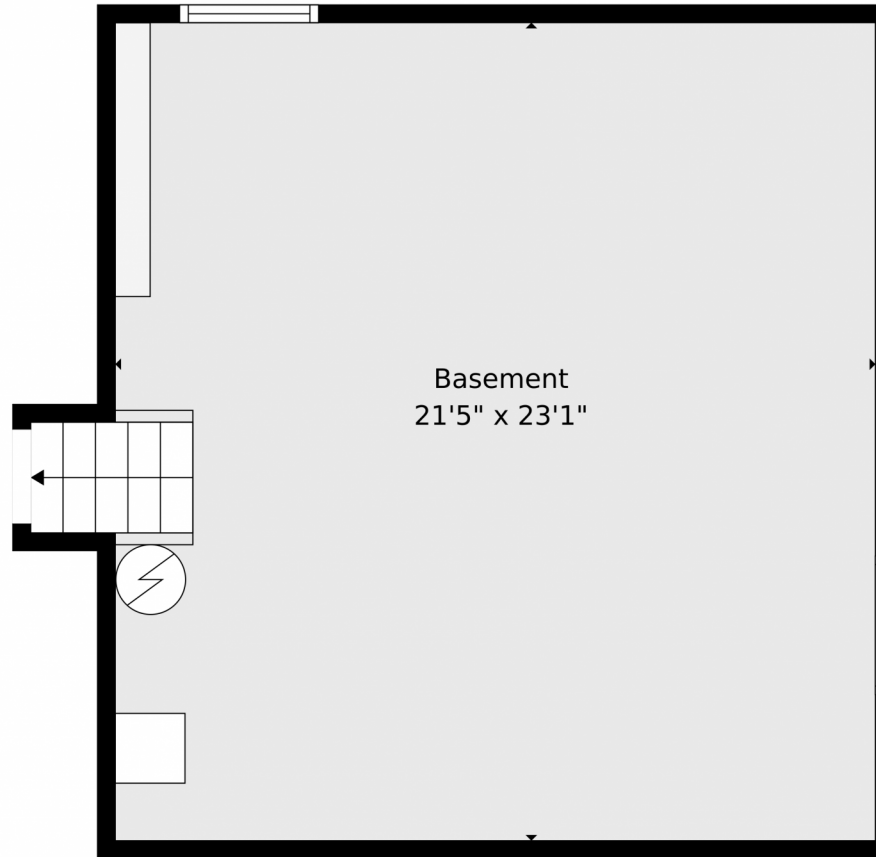
Terry Moss
720-651-1734
tmoss@wedgewoodhomes.com



Scan code
for more
property
details



5 Chautard Court, Pueblo, CO 81005 – Basement



TOTAL: 1652 sq. ft
Basement: 0 sq. ft, 1st floor: 483 sq. ft, 2nd floor: 518 sq. ft, 3rd floor: 651 sq. ft
EXCLUDED AREAS: BASEMENT: 503 sq. ft, GARAGE: 470 sq. ft, COVERED PATIO: 365 sq. ft,
WALLS: 227 sq. ft

Floor Plan Created By V1photos.com. Measurements Deamed Highly Reliable But Not Guaranteed.

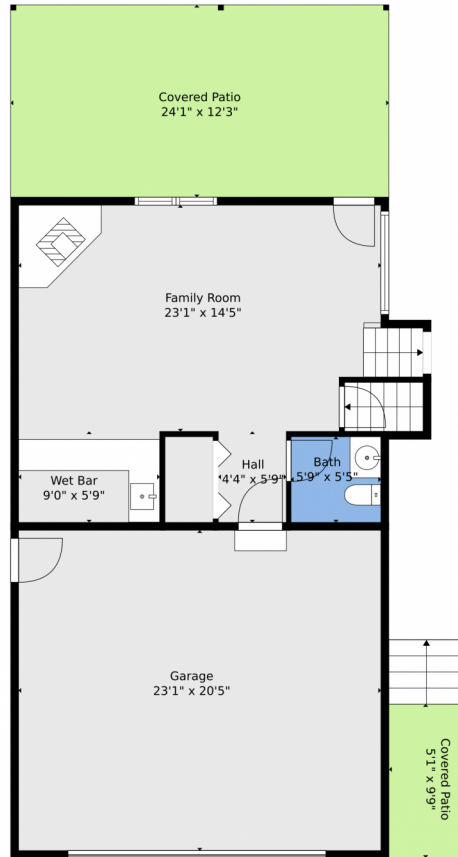


Disclaimer: Sizes and Dimensions are Approximate, Actual May Vary.

Terry Moss
720-651-1734
tmoss@wedgewoodhomes.com



5 Chautard Court, Pueblo, CO 81005 – Lower Level



TOTAL: 1652 sq. ft

Basement: 0 sq. ft, 1st floor: 483 sq. ft, 2nd floor: 518 sq. ft, 3rd floor: 651 sq. ft
EXCLUDED AREAS: BASEMENT: 503 sq. ft, GARAGE: 470 sq. ft, COVERED PATIO: 365 sq. ft,
WALLS: 227 sq. ft

Floor Plan Created By V1photos.com. Measurements Deamed Highly Reliable But Not Guaranteed.

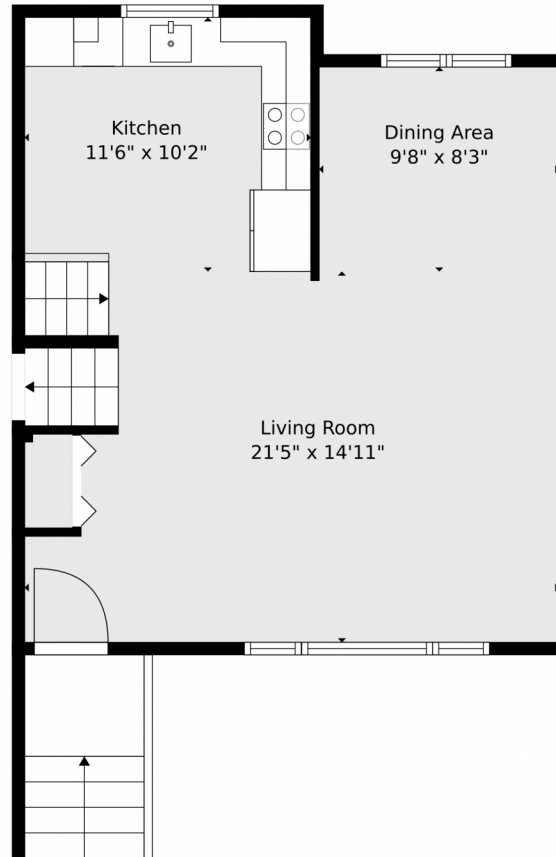


Disclaimer: Sizes and Dimensions are Approximate, Actual May Vary.

Terry Moss
720-651-1734
tmoss@wedgewoodhomes.com



5 Chautard Court, Pueblo, CO 81005 – Main Level



TOTAL: 1652 sq. ft
Basement: 0 sq. ft, 1st floor: 483 sq. ft, 2nd floor: 518 sq. ft, 3rd floor: 651 sq. ft
EXCLUDED AREAS: BASEMENT: 503 sq. ft, GARAGE: 470 sq. ft, COVERED PATIO: 365 sq. ft,
WALLS: 227 sq. ft

Floor Plan Created By V1photos.com. Measurements Deamed Highly Reliable But Not Guaranteed.

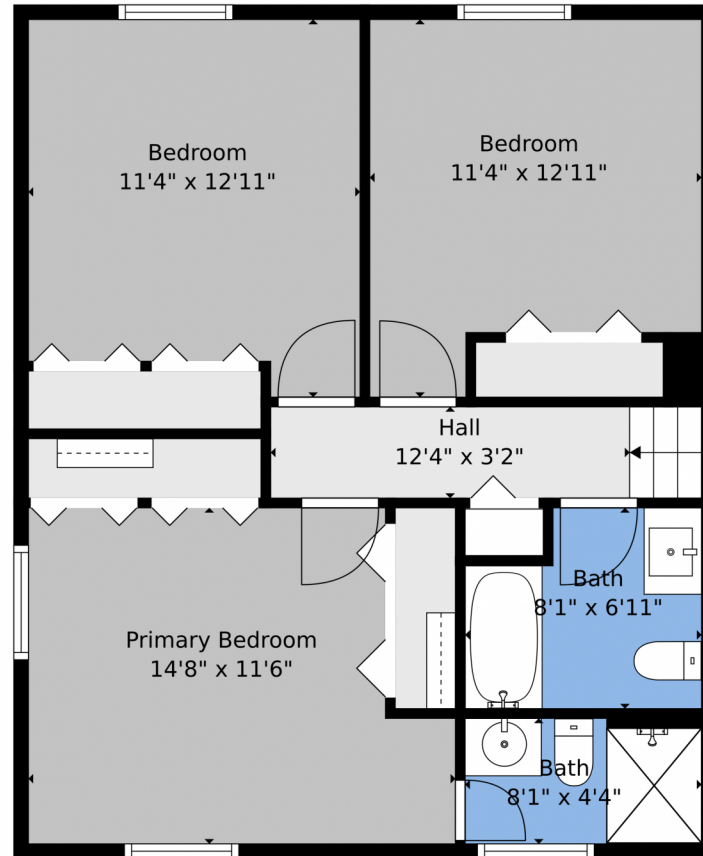


Disclaimer: Sizes and Dimensions are Approximate, Actual May Vary.

Terry Moss
720-651-1734
tmoss@wedgewoodhomes.com



5 Chautard Court, Pueblo, CO 81005 – Upper Level



TOTAL: 1652 sq. ft
Basement: 0 sq. ft, 1st floor: 483 sq. ft, 2nd floor: 518 sq. ft, 3rd floor: 651 sq. ft
EXCLUDED AREAS: BASEMENT: 503 sq. ft, GARAGE: 470 sq. ft, COVERED PATIO: 365 sq. ft,
WALLS: 227 sq. ft

Floor Plan Created By V1photos.com. Measurements Deamed Highly Reliable But Not Guaranteed.



Disclaimer: Sizes and Dimensions are Approximate, Actual May Vary.

Terry Moss
720-651-1734
tmoss@wedgewoodhomes.com



5 Chautard Court, Pueblo, CO 81005 – All Levels



TOTAL: 1652 sq. ft
Basement: 0 sq. ft, 1st floor: 483 sq. ft, 2nd floor: 518 sq. ft, 3rd floor: 651 sq. ft
EXCLUDED AREAS: BASEMENT: 503 sq. ft, GARAGE: 470 sq. ft, COVERED PATIO: 365 sq. ft,
WALLS: 227 sq. ft

Floor Plan Created By V1photos.com. Measurements Deamed Highly Reliable But Not Guaranteed.



Disclaimer: Sizes and Dimensions are Approximate, Actual May Vary.

Terry Moss
720-651-1734
tmoss@wedgewoodhomes.com

