



 Townhouse

 1177 SQFT

 2 Beds

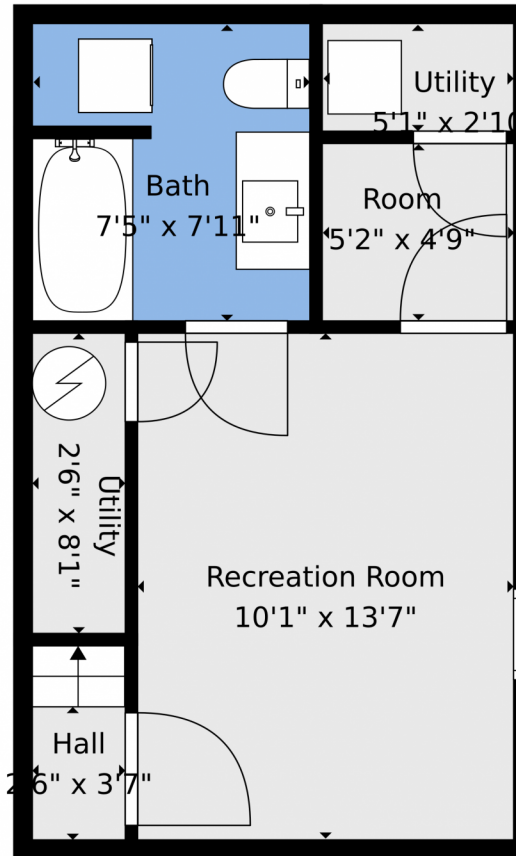
 1 Baths



Taylor Haas
 303-665-7368
 taylorh@coloradorpm.com
<https://www.coloradorpm.com/available-rental-properties-denver>



1639 Gilpin Street, Denver, CO 80218 – Lower Level



TOTAL: 812 sq. ft
Basement: 248 sq. ft, 1st floor: 281 sq. ft, 2nd floor: 283 sq. ft
EXCLUDED AREAS: UTILITY: 35 sq. ft, PORCH: 28 sq. ft, DECK: 43 sq. ft,
WALLS: 90 sq. ft

Floor Plan Created By V1photos.com. Measurements Deamed Highly Reliable But Not Guaranteed.



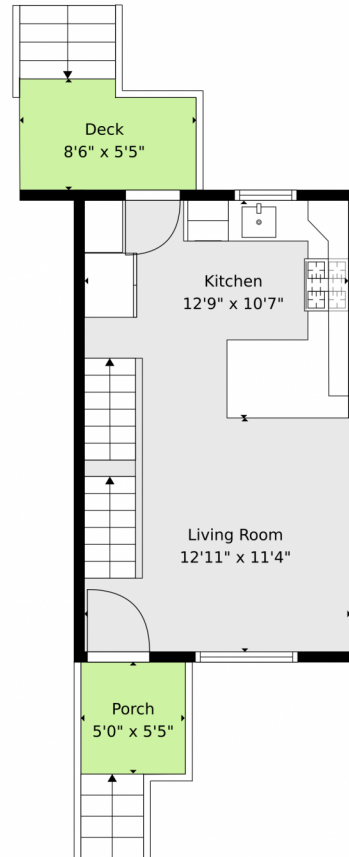
Disclaimer: Sizes and Dimensions are Approximate, Actual May Vary.



Taylor Haas
303-665-7368
taylorh@coloradorpm.com
<https://www.coloradorpm.com/available-rental-properties-denver>



1639 Gilpin Street, Denver, CO 80218 – Main level



TOTAL: 812 sq. ft
Basement: 248 sq. ft, 1st floor: 281 sq. ft, 2nd floor: 283 sq. ft
EXCLUDED AREAS: UTILITY: 35 sq. ft, PORCH: 28 sq. ft, DECK: 43 sq. ft,
WALLS: 90 sq. ft

Floor Plan Created By V1photos.com. Measurements Deamed Highly Reliable But Not Guaranteed.



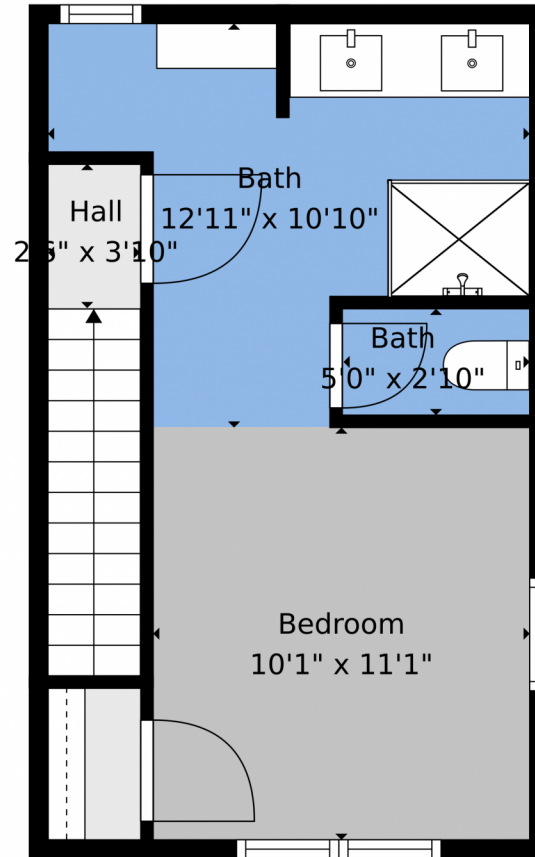
Disclaimer: Sizes and Dimensions are Approximate, Actual May Vary.



Taylor Haas
303-665-7368
taylorh@coloradorpm.com
<https://www.coloradorpm.com/available-rental-properties-denver>



1639 Gilpin Street, Denver, CO 80218 – Upper Level



TOTAL: 812 sq. ft
Basement: 248 sq. ft, 1st floor: 281 sq. ft, 2nd floor: 283 sq. ft
EXCLUDED AREAS: UTILITY: 35 sq. ft, PORCH: 28 sq. ft, DECK: 43 sq. ft,
WALLS: 90 sq. ft

Floor Plan Created By V1photos.com. Measurements Deamed Highly Reliable But Not Guaranteed.

Disclaimer: Sizes and Dimensions are Approximate, Actual May Vary.



Taylor Haas
303-665-7368
taylorh@coloradorpm.com
<https://www.coloradorpm.com/available-rental-properties-denv>



1639 Gilpin Street, Denver, CO 80218 – All Levels



TOTAL: 812 sq. ft
Basement: 248 sq. ft, 1st floor: 281 sq. ft, 2nd floor: 283 sq. ft
EXCLUDED AREAS: UTILITY: 35 sq. ft, PORCH: 28 sq. ft, DECK: 43 sq. ft,
WALLS: 90 sq. ft

Floor Plan Created By V1photos.com. Measurements Deamed Highly Reliable But Not Guaranteed.



Disclaimer: Sizes and Dimensions are Approximate, Actual May Vary.



Taylor Haas
303-665-7368
taylorh@coloradorpm.com
<https://www.coloradorpm.com/available-rental-properties-denver>



Scan code
for more
property
details