



3617 South Fundy Way  
Aurora, CO 80013

MLS # 8335106

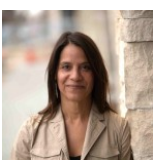


 Single Family

 1997 SQFT

 3 Beds

 2 Baths

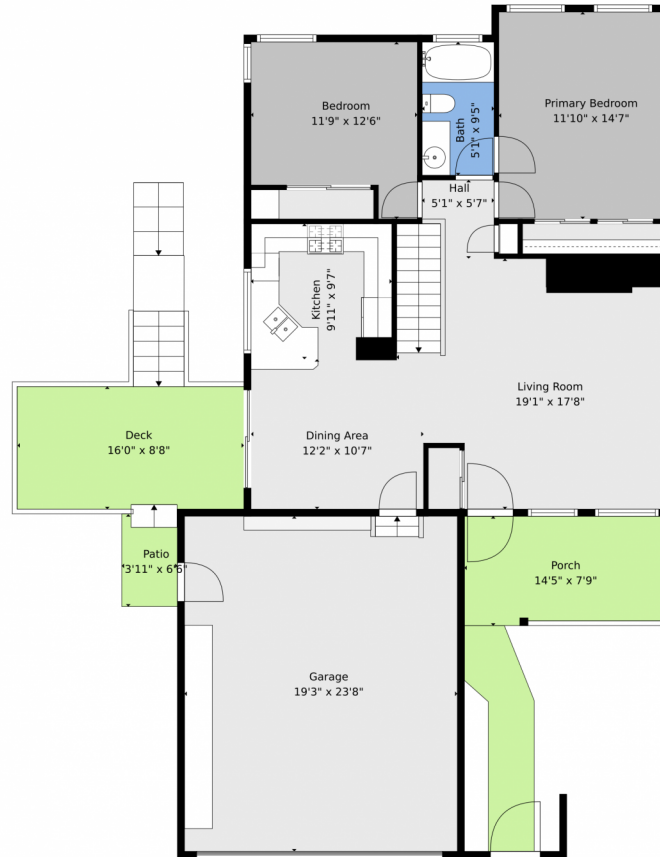


**Jessica Kuhn**  
303-534-0484  
sales@citylimits5280.com



Scan code  
for more  
property  
details

# 3617 South Fundy Way, Aurora, CO 80013 — Main Level



**TOTAL: 1702 sq. ft**  
Basement: 710 sq. ft, 1st floor: 992 sq. ft  
EXCLUDED AREAS: PATIO: 159 sq. ft, UTILITY: 178 sq. ft, GARAGE: 455 sq. ft,  
DECK: 157 sq. ft, PORCH: 108 sq. ft, WALLS: 162 sq. ft

Floor Plan Created By V1photos.com. Measurements Deamed Highly Reliable But Not Guaranteed.



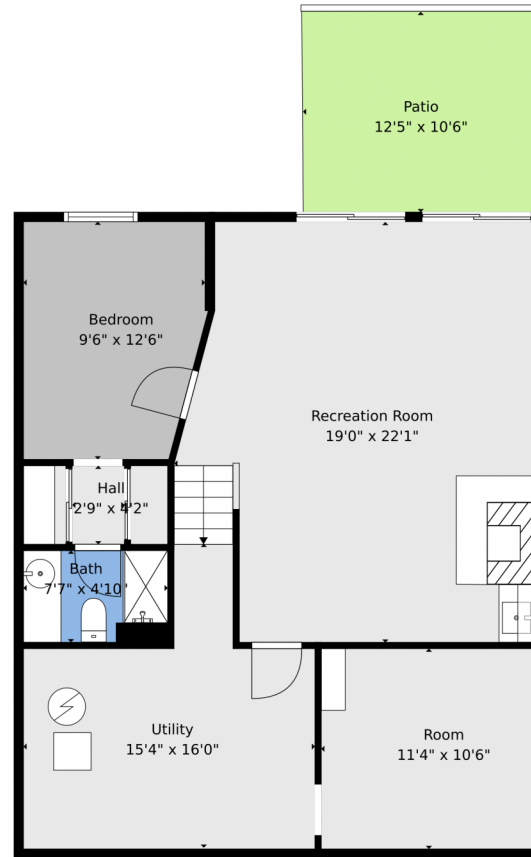
Disclaimer: Sizes and Dimensions are Approximate, Actual May Vary.



**Jessica Kuhn**  
303-534-0484  
sales@citylimits5280.com



# 3617 South Fundy Way, Aurora, CO 80013 — Lower Level



**TOTAL: 1702 sq. ft**  
Basement: 710 sq. ft, 1st floor: 992 sq. ft  
EXCLUDED AREAS: PATIO: 159 sq. ft, UTILITY: 178 sq. ft, GARAGE: 455 sq. ft,  
DECK: 157 sq. ft, PORCH: 108 sq. ft, WALLS: 162 sq. ft

Floor Plan Created By V1photos.com. Measurements Deamed Highly Reliable But Not Guaranteed.

Disclaimer: Sizes and Dimensions are Approximate, Actual May Vary.



**Jessica Kuhn**  
303-534-0484  
sales@citylimits5280.com



# 3617 South Fundy Way, Aurora, CO 80013 — All Levels



**TOTAL: 1702 sq. ft**  
Basement: 710 sq. ft, 1st floor: 992 sq. ft  
EXCLUDED AREAS: PATIO: 159 sq. ft, UTILITY: 178 sq. ft, GARAGE: 455 sq. ft,  
DECK: 157 sq. ft, PORCH: 108 sq. ft, WALLS: 162 sq. ft

Floor Plan Created By V1photos.com. Measurements Deamed Highly Reliable But Not Guaranteed.



Disclaimer: Sizes and Dimensions are Approximate, Actual May Vary.



**Jessica Kuhn**  
303-534-0484  
sales@citylimits5280.com

