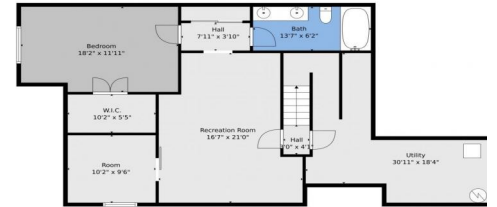




floorplan_single_0



Single Family

2522 SQFT

3 Beds

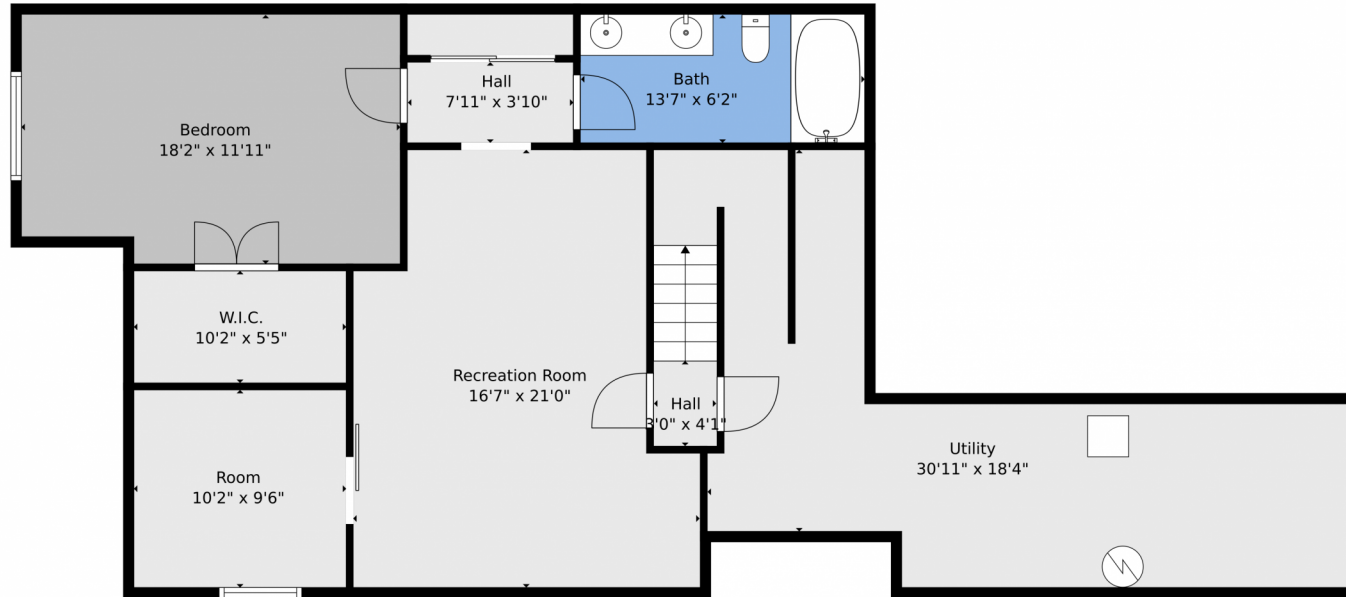
3 Baths



Taylor Haas
 303-665-7368
 taylorh@coloradorpm.com
<https://www.coloradorpm.com/available-rental-properties-denver>



5707 Heathland Terrace, Colorado Springs, CO 80917 – Lower Level



TOTAL: 2121 sq. ft
Basement: 839 sq. ft, 1st floor: 1282 sq. ft
EXCLUDED AREAS: UTILITY: 362 sq. ft, GARAGE: 377 sq. ft, PORCH: 62 sq. ft,
DECK: 158 sq. ft, WALLS: 185 sq. ft

Floor Plan Created By V1photos.com. Measurements Deamed Highly Reliable But Not Guaranteed.



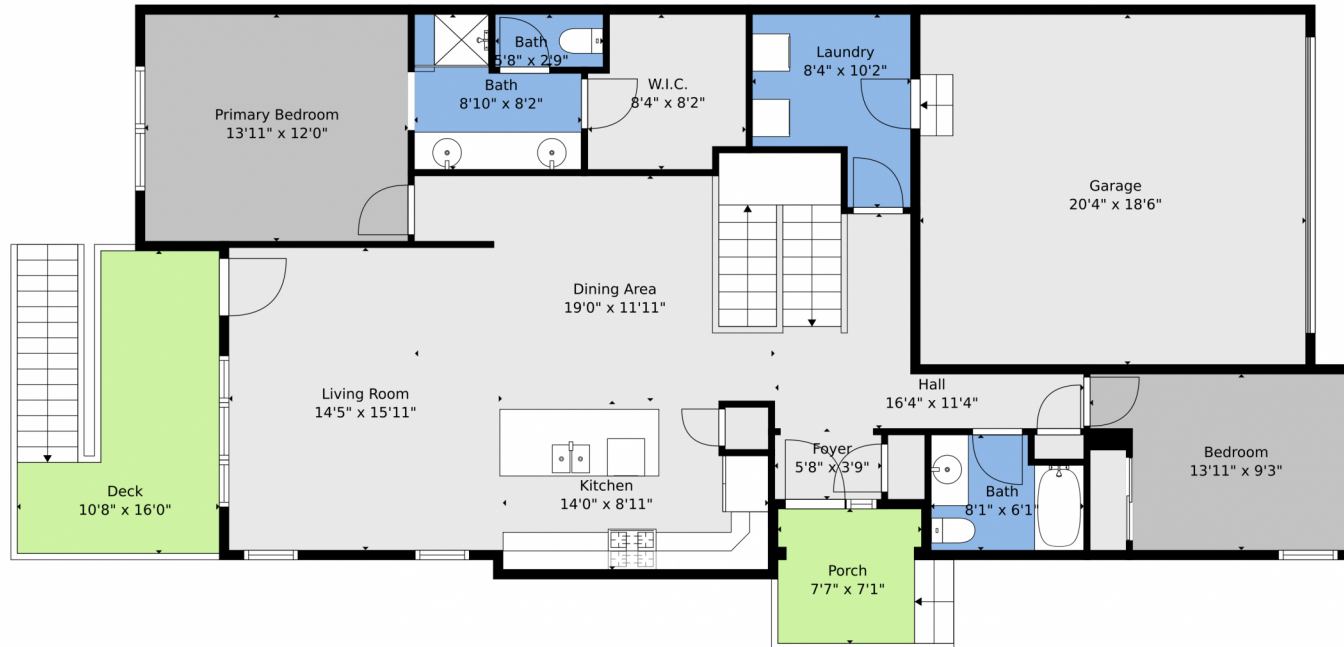
Disclaimer: Sizes and Dimensions are Approximate, Actual May Vary.



Taylor Haas
303-665-7368
taylorh@coloradorpm.com
<https://www.coloradorpm.com/available-rental-properties-denver>



5707 Heathland Terrace, Colorado Springs, CO 80917 – Main Level



TOTAL: 2121 sq. ft
Basement: 839 sq. ft, 1st floor: 1282 sq. ft
EXCLUDED AREAS: UTILITY: 362 sq. ft, GARAGE: 377 sq. ft, PORCH: 62 sq. ft,
DECK: 158 sq. ft, WALLS: 185 sq. ft

Floor Plan Created By V1photos.com. Measurements Deamed Highly Reliable But Not Guaranteed.



Disclaimer: Sizes and Dimensions are Approximate, Actual May Vary.



Taylor Haas

303-665-7368

taylorh@coloradorpm.com

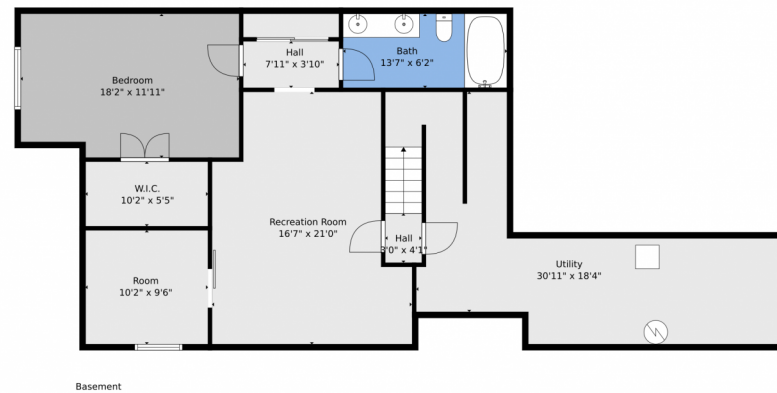
<https://www.coloradorpm.com/available-rental-properties-denver>



Scan code
for more
property
details



5707 Heathland Terrace, Colorado Springs, CO 80917 – All Levels



TOTAL: 2121 sq. ft
Basement: 839 sq. ft, 1st floor: 1282 sq. ft
EXCLUDED AREAS: UTILITY: 362 sq. ft, GARAGE: 377 sq. ft, PORCH: 62 sq. ft,
DECK: 158 sq. ft, WALLS: 185 sq. ft

Floor Plan Created By V1photos.com, Measurements Deamed Highly Reliable But Not Guaranteed.



Disclaimer: Sizes and Dimensions are Approximate, Actual May Vary.



Taylor Haas

303-665-7368

taylorh@coloradorpm.com

<https://www.coloradorpm.com/available-rental-properties-denver>



Scan code
for more
property
details

