



 Single Family

 1872 SQFT

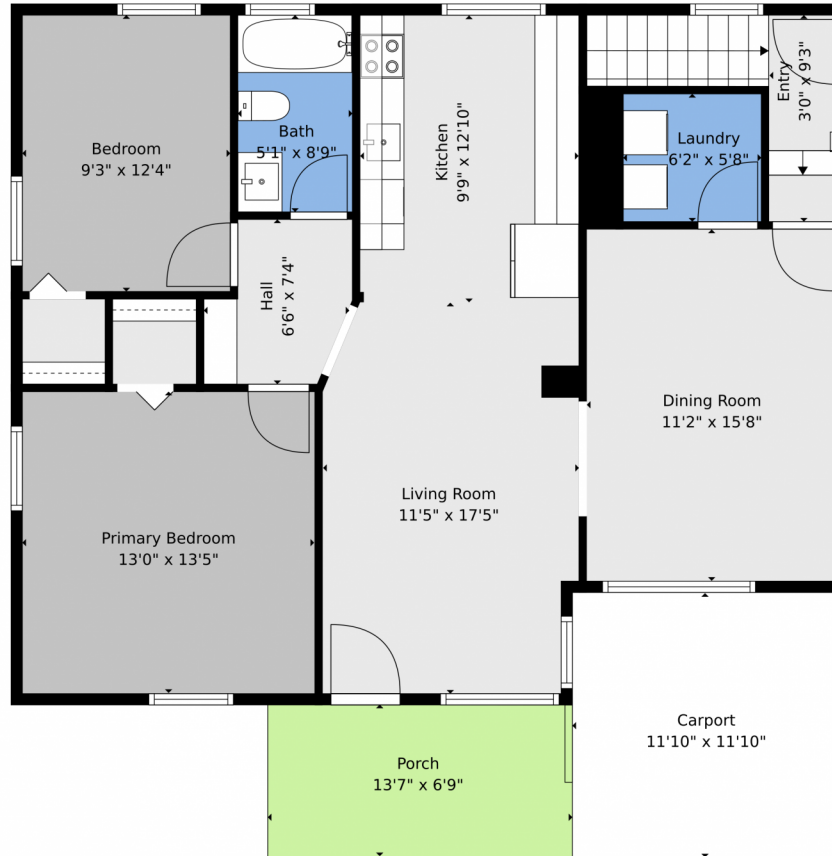
 4 Beds

 2 Baths



**Taylor Haas**  
303-665-7368  
taylorh@coloradorpm.com  
<https://www.coloradorpm.com/available-rental-properties-denver>





**TOTAL: 1738 sq. ft**  
Basement: 699 sq. ft, 1st floor: 1039 sq. ft  
EXCLUDED AREAS: UTILITY: 55 sq. ft, CARPORT: 140 sq. ft, PORCH: 92 sq. ft,  
WALLS: 136 sq. ft

Floor Plan Created By V1photos.com. Measurements Deamed Highly Reliable But Not Guaranteed.



Disclaimer: Sizes and Dimensions are Approximate, Actual May Vary.



**Taylor Haas**  
303-665-7368  
taylorh@coloradorpm.com  
<https://www.coloradorpm.com/available-rental-properties-denver>



Scan code  
for more  
property  
details

5355 Newton St, Denver, CO 80221 – Basement



**TOTAL: 1738 sq. ft**  
Basement: 699 sq. ft, 1st floor: 1039 sq. ft  
EXCLUDED AREAS: UTILITY: 55 sq. ft, CARPORT: 140 sq. ft, PORCH: 92 sq. ft,  
WALLS: 136 sq. ft

Floor Plan Created By V1photos.com. Measurements Deamed Highly Reliable But Not Guaranteed.



Disclaimer: Sizes and Dimensions are Approximate, Actual May Vary.



**Taylor Haas**  
303-665-7368  
taylorh@coloradorpm.com  
<https://www.coloradorpm.com/available-rental-properties-denver>



Scan code  
for more  
property  
details

# 5355 Newton St, Denver, CO 80221 – All Levels



**TOTAL: 1738 sq. ft**  
Basement: 699 sq. ft, 1st floor: 1039 sq. ft  
EXCLUDED AREAS: UTILITY: 55 sq. ft, CARPORT: 140 sq. ft, PORCH: 92 sq. ft,  
WALLS: 136 sq. ft

Floor Plan Created By V1photos.com. Measurements Deamed Highly Reliable But Not Guaranteed.



Disclaimer: Sizes and Dimensions are Approximate, Actual May Vary.



**Taylor Haas**  
303-665-7368  
taylorh@coloradorpm.com  
<https://www.coloradorpm.com/available-rental-properties-denver>



Scan code  
for more  
property  
details

