

Single Family 2423 SQFT 4 Beds 3/1 Baths 2 Car 0.08 Acre

PROPERTY DETAILS

Welcome to this charming 4-bedroom, 4-bathroom home in the desirable Copperleaf neighborhood. Spanning 2,423 sq. ft., it offers a cozy living room with a gas fireplace and a kitchen featuring granite countertops and an island. Upstairs, find three bedrooms, including a primary suite with a walk-in closet and dual vanity bathroom. The finished basement adds a rec area, an extra bedroom, and a 3/4 bath, ideal for guests or a mother-in-law suite. The garage has an extra tall door for larger vehicles and additional storage. With new exterior paint (2022) and a roof installation scheduled for 2024, this home is ready for you. Enjoy nearby schools, parks, shops, and dining. ****LENDER INCENTIVE! 1% TEMP RATE BUYDOWN FOR 1ST YEAR**** CALL ROBIN @ SLS LENDING 303-378-5973.



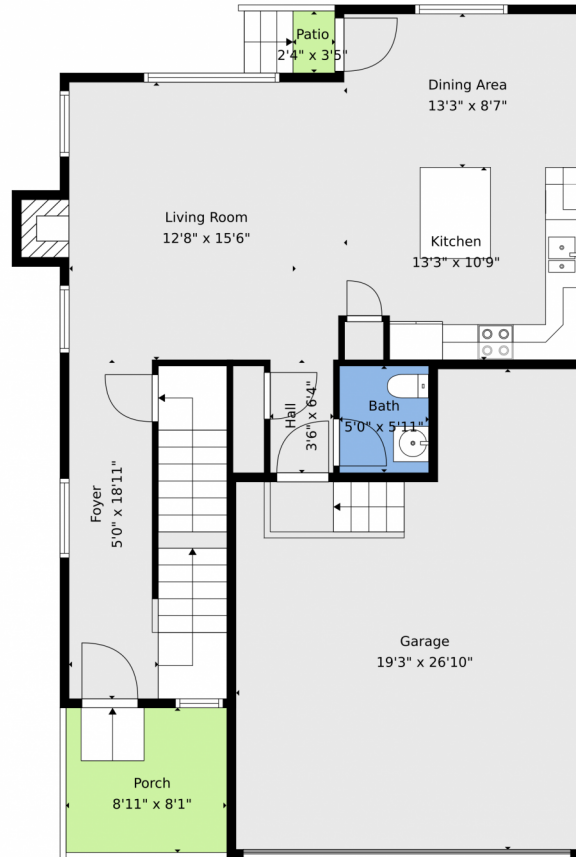
Steven Karides
720-757-1119
stevenkarides@gmail.com



Scan code
for more
property
details



4860 S Picadilly Court, Aurora, CO 80015 – Main



TOTAL: 2260 sq. ft
Basement: 635 sq. ft, 1st floor: 733 sq. ft, 2nd floor: 892 sq. ft
EXCLUDED AREAS: UTILITY: 65 sq. ft, GARAGE: 445 sq. ft, PORCH: 73 sq. ft,
PATIO: 18 sq. ft, FIREPLACE: 12 sq. ft, OPEN TO BELOW: 91 sq. ft,
WALLS: 225 sq. ft

Floor Plan Created By V1photos.com. Measurements Deamed Highly Reliable But Not Guaranteed.



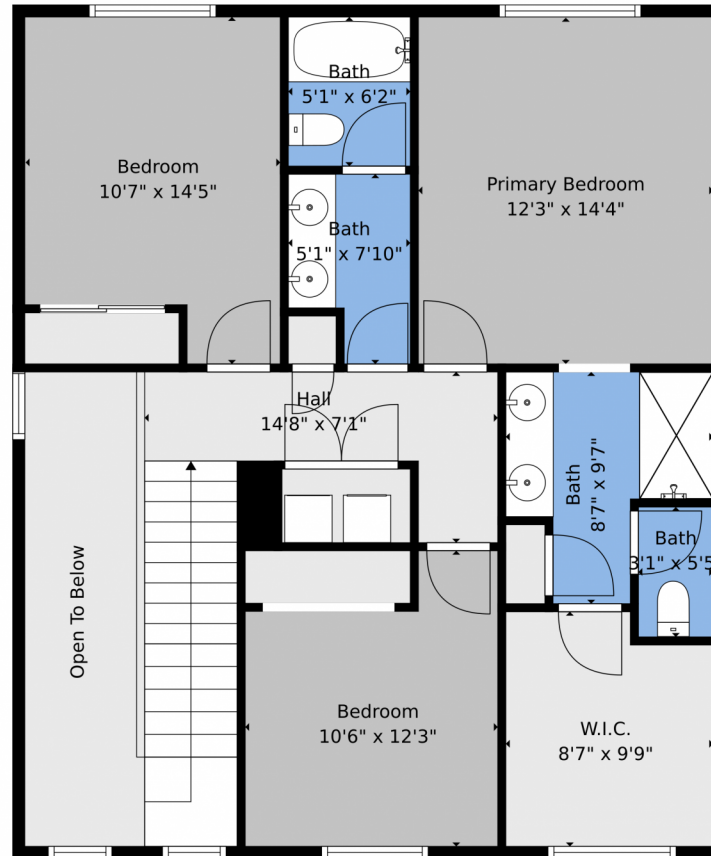
Disclaimer: Sizes and Dimensions are Approximate, Actual May Vary.



Steven Karides
720-757-1119
stevenkarides@gmail.com



4860 S Picadilly Court, Aurora, CO 80015 – 2nd Level



TOTAL: 2260 sq. ft
Basement: 635 sq. ft, 1st floor: 733 sq. ft, 2nd floor: 892 sq. ft
EXCLUDED AREAS: UTILITY: 65 sq. ft, GARAGE: 445 sq. ft, PORCH: 73 sq. ft,
PATIO: 18 sq. ft, FIREPLACE: 12 sq. ft, OPEN TO BELOW: 91 sq. ft,
WALLS: 225 sq. ft

Floor Plan Created By V1photos.com. Measurements Deamed Highly Reliable But Not Guaranteed.



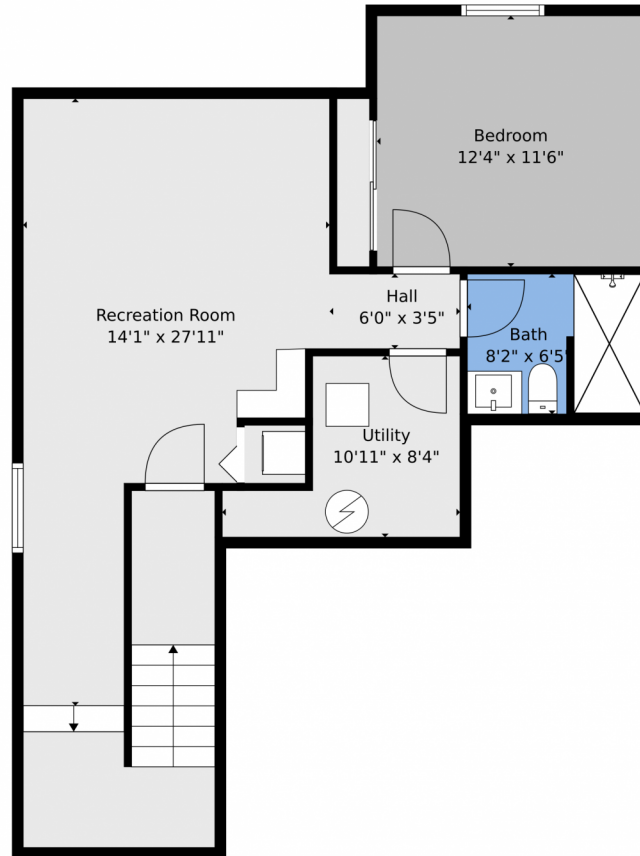
Disclaimer: Sizes and Dimensions are Approximate, Actual May Vary.



Steven Karides
720-757-1119
stevenkarides@gmail.com



4860 S Picadilly Court, Aurora, CO 80015 – Basement



TOTAL: 2260 sq. ft

Basement: 635 sq. ft, 1st floor: 733 sq. ft, 2nd floor: 892 sq. ft
EXCLUDED AREAS: UTILITY: 65 sq. ft, GARAGE: 445 sq. ft, PORCH: 73 sq. ft,
PATIO: 18 sq. ft, FIREPLACE: 12 sq. ft, OPEN TO BELOW: 91 sq. ft,
WALLS: 225 sq. ft

Floor Plan Created By V1photos.com. Measurements Deamed Highly Reliable But Not Guaranteed.

Disclaimer: Sizes and Dimensions are Approximate, Actual May Vary.



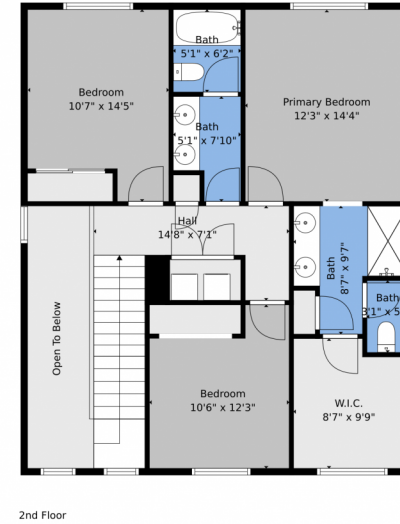
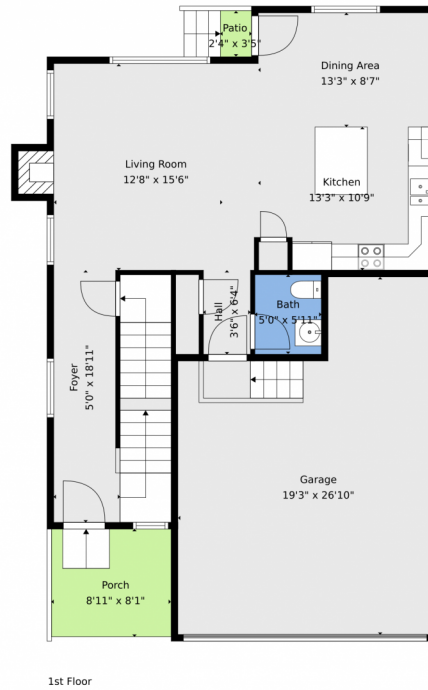
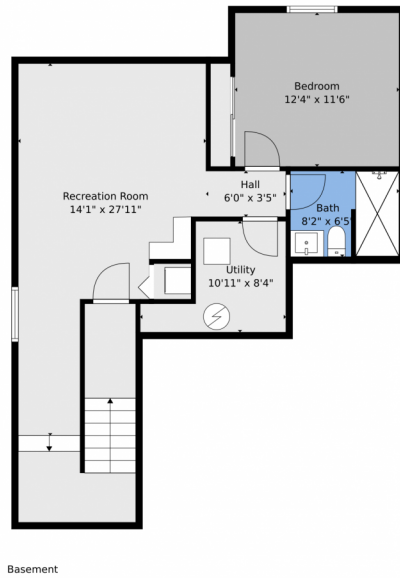
Steven Karides
720-757-1119
stevenkarides@gmail.com



Scan code
for more
property
details



4860 S Picadilly Court, Aurora, CO 80015 – All Levels



TOTAL: 2260 sq. ft
Basement: 635 sq. ft, 1st floor: 733 sq. ft, 2nd floor: 892 sq. ft
EXCLUDED AREAS: UTILITY: 65 sq. ft, GARAGE: 445 sq. ft, PORCH: 73 sq. ft,
PATIO: 18 sq. ft, FIREPLACE: 12 sq. ft, OPEN TO BELOW: 91 sq. ft,
WALLS: 225 sq. ft

Floor Plan Created By V1photos.com. Measurements Deamed Highly Reliable But Not Guaranteed.



Disclaimer: Sizes and Dimensions are Approximate, Actual May Vary.



Steven Karides
720-757-1119
stevenkarides@gmail.com

