



30553 Sun Creek Drive  
Evergreen, CO 80439



Single Family



2045 SQFT



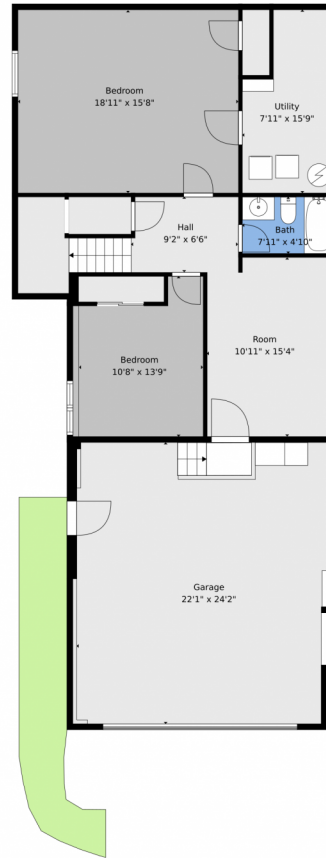
Michael Glunk  
970-718-2860  
mglunk@gmail.com



Scan code  
for more  
property  
details



# 30553 Sun Creek Drive, Evergreen, CO 80439 – Lower Level



**TOTAL: 1777 sq. ft**  
Basement: 812 sq. ft, 1st floor: 965 sq. ft  
EXCLUDED AREAS: GARAGE: 534 sq. ft, UTILITY: 108 sq. ft, UNDEFINED: 17 sq. ft,  
PORCH: 53 sq. ft, BALCONY: 537 sq. ft, PATIO: 28 sq. ft,  
FIREPLACE: 21 sq. ft, WALLS: 149 sq. ft

Floor Plan Created By V1photos.com. Measurements Deamed Highly Reliable But Not Guaranteed.



Disclaimer: Sizes and Dimensions are Approximate, Actual May Vary.



**Michael Glunk**  
970-718-2860  
mglunk@gmail.com



# 30553 Sun Creek Drive, Evergreen, CO 80439 — Main Level



**TOTAL: 1777 sq. ft**  
Basement: 812 sq. ft, 1st floor: 965 sq. ft  
EXCLUDED AREAS: GARAGE: 534 sq. ft, UTILITY: 108 sq. ft, UNDEFINED: 17 sq. ft,  
PORCH: 53 sq. ft, BALCONY: 537 sq. ft, PATIO: 28 sq. ft,  
FIREPLACE: 21 sq. ft, WALLS: 149 sq. ft

Floor Plan Created By V1photos.com. Measurements Deamed Highly Reliable But Not Guaranteed.

Disclaimer: Sizes and Dimensions are Approximate, Actual May Vary.



**Michael Glunk**  
970-718-2860  
mglunk@gmail.com



# 30553 Sun Creek Drive, Evergreen, CO 80439 – All Levels



**TOTAL: 1777 sq. ft**  
Basement: 812 sq. ft, 1st floor: 965 sq. ft  
EXCLUDED AREAS: GARAGE: 534 sq. ft, UTILITY: 108 sq. ft, UNDEFINED: 17 sq. ft,  
PORCH: 53 sq. ft, BALCONY: 537 sq. ft, PATIO: 28 sq. ft,  
FIREPLACE: 21 sq. ft, WALLS: 149 sq. ft

Floor Plan Created By V1photos.com. Measurements Deamed Highly Reliable But Not Guaranteed.

Disclaimer: Sizes and Dimensions are Approximate, Actual May Vary.



**Michael Glunk**  
970-718-2860  
mglunk@gmail.com



Scan code  
for more  
property  
details