



24073 Peak Drive
 Conifer, CO 80433
 COMMUNITY: Piano Meadows

MLS # 3755740
 PRICE \$895,000



Single Family 1052 SQFT 1 Bed 1/1 Baths 2 Car 5.28 Acre

PROPERTY DETAILS

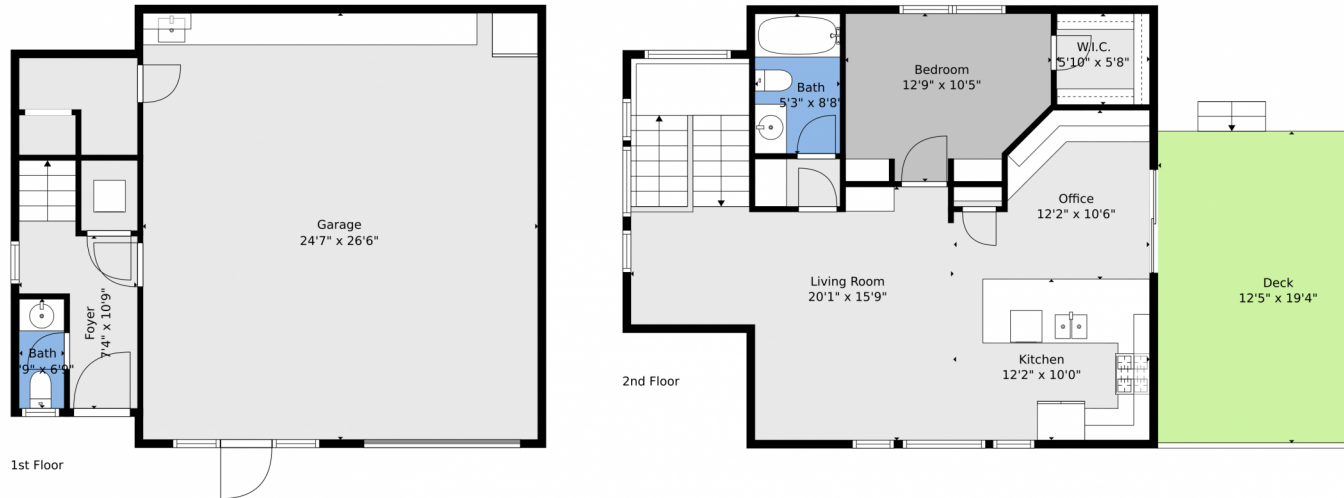
PRIME LOCATION! This rare opportunity in Richmond Hill, Conifer, offers privacy and stunning mountain views at 9,100 ft. Enjoy breathtaking sunrises and sunsets, with 60-mile vistas of Denver and the Continental Divide. The lot features open fields, dramatic rock formations, and borders 99 acres of shared land. A partially finished estate is ready for your dream home, with a flat build site for a 4,000 sqft custom residence. The septic system accommodates 5 bedrooms, perfect for large households. Utilities are in place, including 200-amp service, water, and internet. The existing coach house serves as guest quarters with a full kitchen and bath. An oversized garage adds versatility, while a maintenance-free deck and security system enhance the property. This is a unique chance to own a luxury homesite with built-in equity.



Toby Hillman
 720-261-6064
 hillmanrealestateservices@hotmail.com
<http://www.realtortobyhillman.com>



24073 Peak Drive, Conifer, CO 80433 – All Levels



TOTAL: 906 sq. ft
1st floor: 127 sq. ft, 2nd floor: 779 sq. ft
EXCLUDED AREAS: GARAGE: 652 sq. ft, UNDEFINED: 34 sq. ft, DECK: 241 sq. ft,
WALLS: 127 sq. ft

Floor Plan Created By V1photos.com. Measurements Deamed Highly Reliable But Not Guaranteed.



Disclaimer: Sizes and Dimensions are Approximate, Actual May Vary.



Toby Hillman
720-261-6064
hillmanrealestateservices@hotmail.com
<http://www.realtortobyhillman.com>

