



Single Family



2835 SQFT



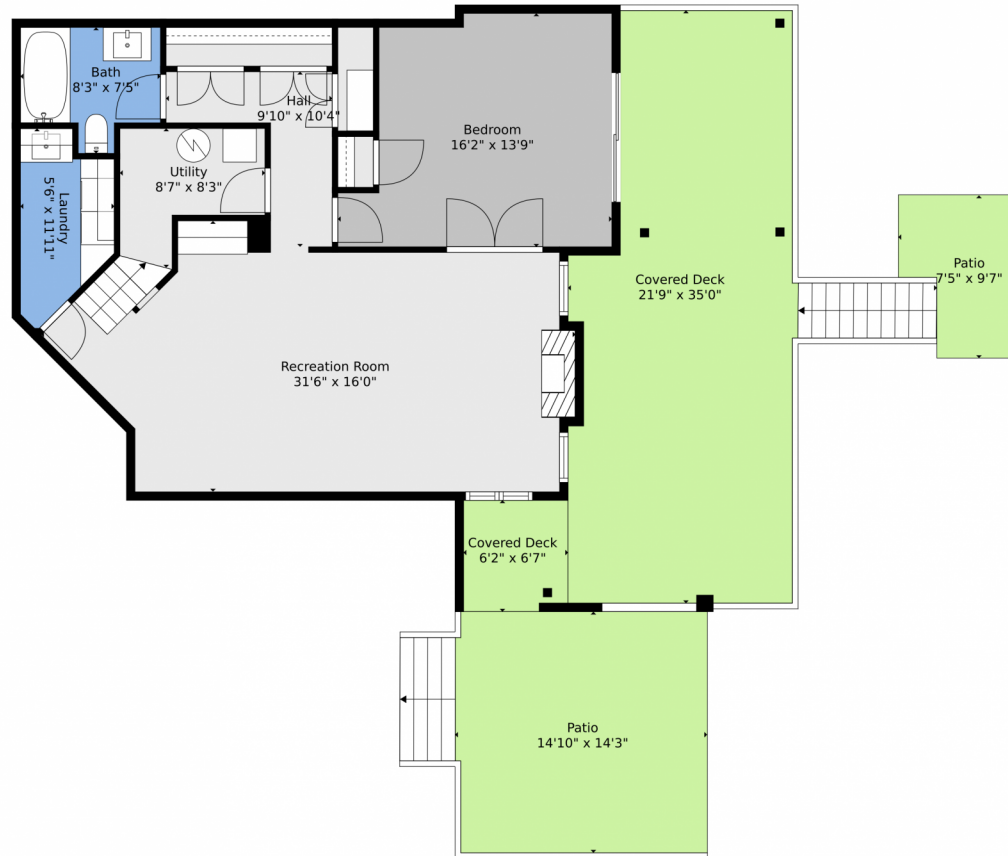
Jenna and Patrick McMenaman
303-912-0338
jenna@madisonprops.com



Scan code
for more
property
details



29906 Troutdale Park Place, Evergreen, CO 80439 – Lower Level



TOTAL: 2401 sq. ft

Basement: 822 sq. ft, 1st floor: 1186 sq. ft, 2nd floor: 393 sq. ft
EXCLUDED AREAS: PATIO: 866 sq. ft, COVERED DECK: 480 sq. ft, UTILITY: 52 sq. ft,
FIREPLACE: 6 sq. ft, DECK: 288 sq. ft, PORCH: 14 sq. ft,
GARAGE: 367 sq. ft, BAY WINDOW: 4 sq. ft, OPEN TO BELOW: 424 sq. ft,
WALLS: 236 sq. ft

Floor Plan Created By V1photos.com. Measurements Deamed Highly Reliable But Not Guaranteed.



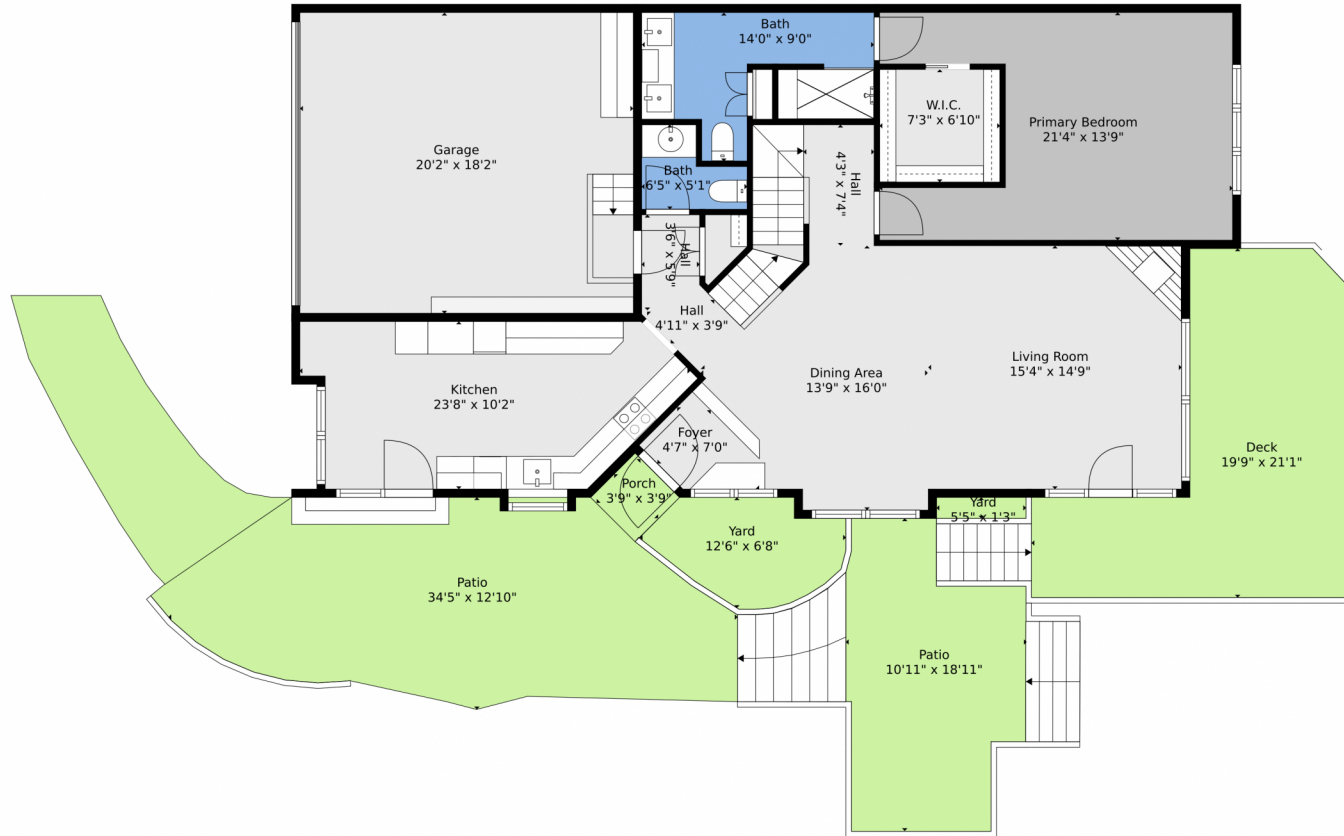
Disclaimer: Sizes and Dimensions are Approximate, Actual May Vary.



Jenna and Patrick McMenaman
303-912-0338
jenna@madisonprops.com



29906 Troutdale Park Place, Evergreen, CO 80439 – Main



TOTAL: 2401 sq. ft
Basement: 822 sq. ft, 1st floor: 1186 sq. ft, 2nd floor: 393 sq. ft
EXCLUDED AREAS: PATIO: 866 sq. ft, COVERED DECK: 480 sq. ft, UTILITY: 52 sq. ft,
FIREPLACE: 6 sq. ft, DECK: 288 sq. ft, PORCH: 14 sq. ft,
GARAGE: 367 sq. ft, BAY WINDOW: 4 sq. ft, OPEN TO BELOW: 424 sq. ft,
WALLS: 236 sq. ft

Floor Plan Created By V1photos.com. Measurements Deamed Highly Reliable But Not Guaranteed.



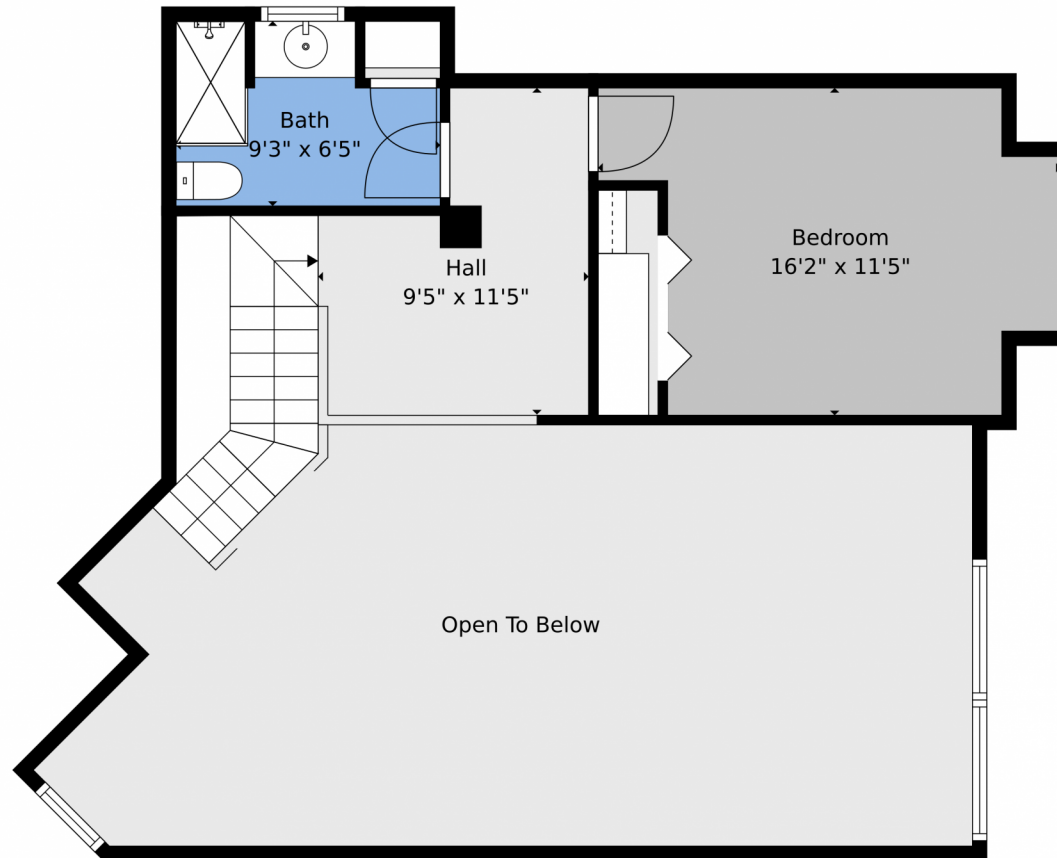
Disclaimer: Sizes and Dimensions are Approximate, Actual May Vary.



Jenna and Patrick McMenaman
303-912-0338
jenna@madisonprops.com



29906 Troutdale Park Place, Evergreen, CO 80439 – 2nd Level



TOTAL: 2401 sq. ft
Basement: 822 sq. ft, 1st floor: 1186 sq. ft, 2nd floor: 393 sq. ft
EXCLUDED AREAS: PATIO: 866 sq. ft, COVERED DECK: 480 sq. ft, UTILITY: 52 sq. ft,
FIREPLACE: 6 sq. ft, DECK: 288 sq. ft, PORCH: 14 sq. ft,
GARAGE: 367 sq. ft, BAY WINDOW: 4 sq. ft, OPEN TO BELOW: 424 sq. ft,
WALLS: 236 sq. ft

Floor Plan Created By V1photos.com. Measurements Deamed Highly Reliable But Not Guaranteed.

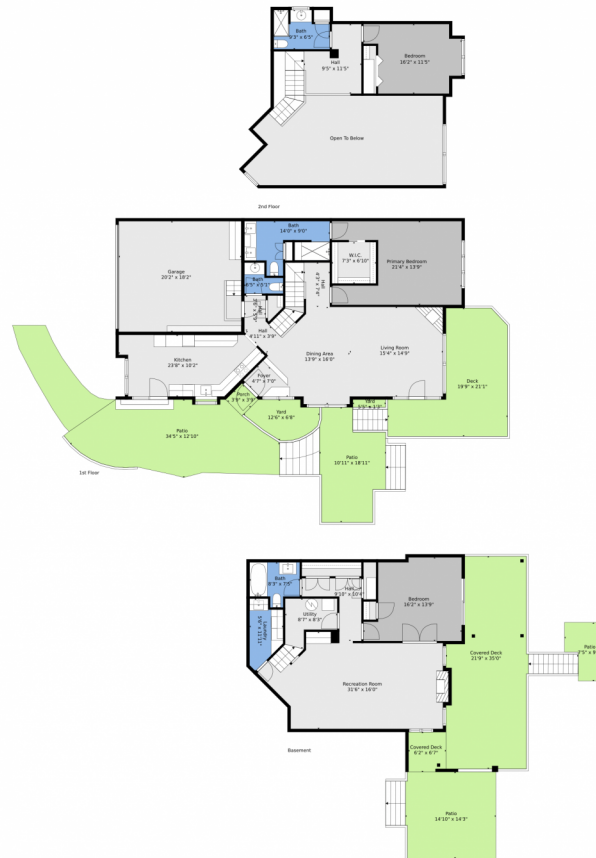
Disclaimer: Sizes and Dimensions are Approximate, Actual May Vary.



Jenna and Patrick McMenaman
303-912-0338
jenna@madisonprops.com



29906 Troutdale Park Place, Evergreen, CO 80439 – All Levels



TOTAL: 2401 sq. ft

Basement: 822 sq. ft, 1st floor: 1186 sq. ft, 2nd floor: 393 sq. ft

EXCLUDED AREAS: PATIO: 866 sq. ft, COVERED DECK: 480 sq. ft, UTILITY: 52 sq. ft,

FIREPLACE: 6 sq. ft, DECK: 288 sq. ft, PORCH: 14 sq. ft,

GARAGE: 367 sq. ft, BAY WINDOW: 4 sq. ft, OPEN TO BELOW: 424 sq. ft,

WALLS: 236 sq. ft

Floor Plan Created By V1photos.com. Measurements Deamed Highly Reliable But Not Guaranteed.



Disclaimer: Sizes and Dimensions are Approximate, Actual May Vary.



Jenna and Patrick McMenaman
303-912-0338
jenna@madisonprops.com



Scan code
for more
property
details

