



Single Family



2410 SQFT

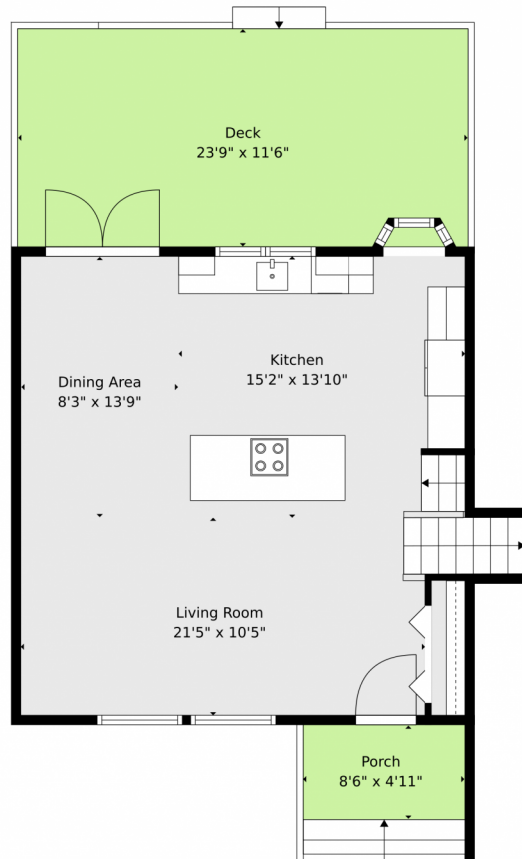


Philip Cooper
970-232-4844
pcooper@thegroupinc.com



Scan code
for more
property
details





TOTAL: 2195 sq. ft

Basement: 417 sq. ft, 1st floor: 495 sq. ft, 2nd floor: 580 sq. ft, 3rd floor: 703 sq. ft
EXCLUDED AREAS: UTILITY: 49 sq. ft, GARAGE: 404 sq. ft, COVERED PATIO: 240 sq. ft,
FIREPLACE: 15 sq. ft, PORCH: 59 sq. ft, DECK: 269 sq. ft,
BAY WINDOW: 5 sq. ft, OPEN TO BELOW: 8 sq. ft, WALLS: 238 sq. ft

Floor Plan Created By V1photos.com. Measurements Deamed Highly Reliable But Not Guaranteed.



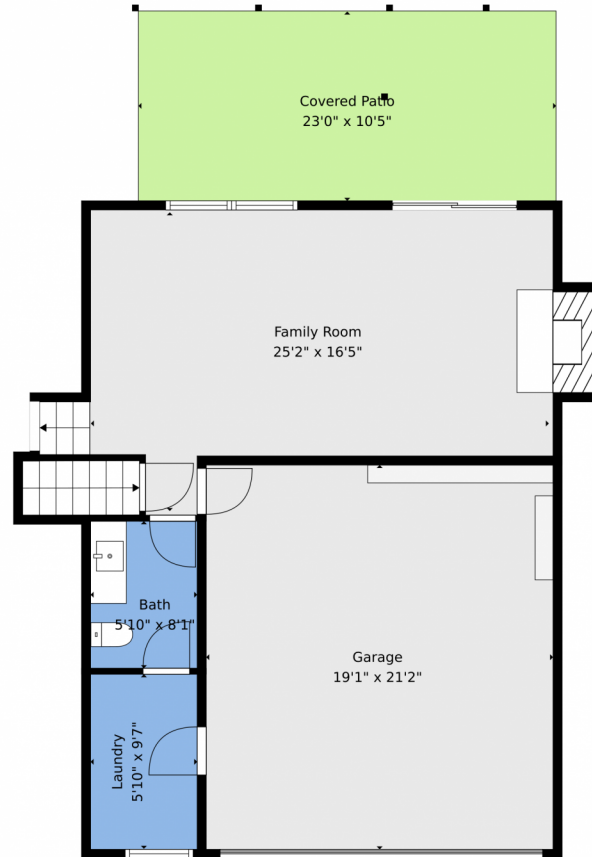
Disclaimer: Sizes and Dimensions are Approximate, Actual May Vary.



Philip Cooper
970-232-4844
pcooper@thegroupinc.com



6757 Xenon Drive, Arvada, CO 80004 – Lower Level



TOTAL: 2195 sq. ft

Basement: 417 sq. ft, 1st floor: 495 sq. ft, 2nd floor: 580 sq. ft, 3rd floor: 703 sq. ft
EXCLUDED AREAS: UTILITY: 49 sq. ft, GARAGE: 404 sq. ft, COVERED PATIO: 240 sq. ft,
FIREPLACE: 15 sq. ft, PORCH: 59 sq. ft, DECK: 269 sq. ft,
BAY WINDOW: 5 sq. ft, OPEN TO BELOW: 8 sq. ft, WALLS: 238 sq. ft

Floor Plan Created By V1photos.com. Measurements Deamed Highly Reliable But Not Guaranteed.



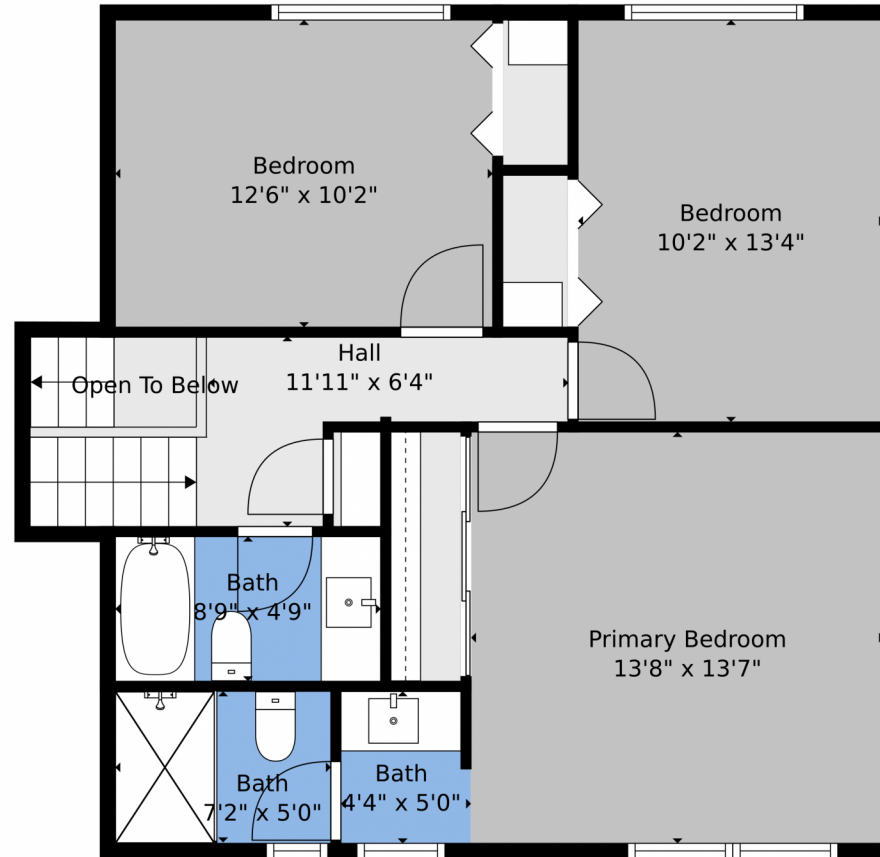
Disclaimer: Sizes and Dimensions are Approximate, Actual May Vary.



Philip Cooper
970-232-4844
pcooper@thegroupinc.com



6757 Xenon Drive, Arvada, CO 80004 – 2nd Level



TOTAL: 2195 sq. ft

Basement: 417 sq. ft, 1st floor: 495 sq. ft, 2nd floor: 580 sq. ft, 3rd floor: 703 sq. ft
EXCLUDED AREAS: UTILITY: 49 sq. ft, GARAGE: 404 sq. ft, COVERED PATIO: 240 sq. ft,
FIREPLACE: 15 sq. ft, PORCH: 59 sq. ft, DECK: 269 sq. ft,
BAY WINDOW: 5 sq. ft, OPEN TO BELOW: 8 sq. ft, WALLS: 238 sq. ft

Floor Plan Created By V1photos.com. Measurements Deamed Highly Reliable But Not Guaranteed.



Disclaimer: Sizes and Dimensions are Approximate, Actual May Vary.



Philip Cooper
970-232-4844
pcooper@thegroupinc.com



Scan code
for more
property
details





TOTAL: 2195 sq. ft

Basement: 417 sq. ft, 1st floor: 495 sq. ft, 2nd floor: 580 sq. ft, 3rd floor: 703 sq. ft
EXCLUDED AREAS: UTILITY: 49 sq. ft, GARAGE: 404 sq. ft, COVERED PATIO: 240 sq. ft,
FIREPLACE: 15 sq. ft, PORCH: 59 sq. ft, DECK: 269 sq. ft,
BAY WINDOW: 5 sq. ft, OPEN TO BELOW: 8 sq. ft, WALLS: 238 sq. ft

Floor Plan Created By V1photos.com. Measurements Deamed Highly Reliable But Not Guaranteed.



Disclaimer: Sizes and Dimensions are Approximate, Actual May Vary.



Philip Cooper
970-232-4844
pcooper@thegroupinc.com



6757 Xenon Drive, Arvada, CO 80004 – All Levels



TOTAL: 2195 sq. ft
Basement: 417 sq. ft, 1st floor: 495 sq. ft, 2nd floor: 580 sq. ft, 3rd floor: 703 sq. ft
EXCLUDED AREAS: UTILITY: 49 sq. ft, GARAGE: 404 sq. ft, COVERED PATIO: 240 sq. ft,
FIREPLACE: 15 sq. ft, PORCH: 59 sq. ft, DECK: 269 sq. ft,
BAY WINDOW: 5 sq. ft, OPEN TO BELOW: 8 sq. ft, WALLS: 238 sq. ft

Floor Plan Created By V1photos.com. Measurements Deamed Highly Reliable But Not Guaranteed.



Disclaimer: Sizes and Dimensions are Approximate, Actual May Vary.



Philip Cooper
970-232-4844
pcooper@thegroupinc.com

