



20806 Willowbend Lane
 Parker, CO 80138
 COMMUNITY: Hidden River

MLS # 1807609
 PRICE \$550,000



floorplan_single_0



Single Family
 1758 SQFT
 4 Beds
 3/1 Baths
 2 Car
 0.12 Acre

PROPERTY DETAILS

Located on a quiet cul-de-sac in Hidden River, this 4-bedroom, 4-bath home offers an incredible combination of location, functionality, and opportunity in the heart of Parker.

Backing to greenbelt, playground, and neighborhood trails connecting directly to Legend High School and the community pool, this home is perfectly positioned for Colorado living.

Inside, soaring ceilings and natural light create an open and welcoming feel throughout the formal living room and family room with fireplace. The kitchen features hardwood floors, pull-out shelving, a charming garden window, and newer appliances including the microwave, dishwasher, and refrigerator.

Major improvements have already been completed, including all new windows and central air conditioning, giving buyers peace of mind while still leaving room to personalize and update over time.



Jeni VanOrnum
 303-475-3880
 jenivorealtor@gmail.com
<https://www.jenivosellscolorado.com>



Upstairs, the primary suite includes a private en suite bath, along with two additional bedrooms and another full bath.

The basement offers exceptional flexibility with a large bathroom featuring a jacuzzi tub, making it ideal for:

- Multi-generational living
- Guest space
- A second primary suite
- Media or game room
- Additional family room

Outside, enjoy the large backyard, deck, mature setting, and direct access to open space and trails.

All of this in a fantastic Parker location with easy access to Parker Road, E-470, I-25, shopping, dining, and Douglas County Schools.

This is a rare opportunity for buyers looking for a great neighborhood, strong layout, major updates already completed, and the chance to create their own style over time.



Jeni VanOrnum
303-475-3880
jenivorealtor@gmail.com
<https://www.jenivosellscolorado.com>



Scan code
for more
property
details





TOTAL: 1541 sq. ft

Basement: 288 sq. ft, 1st floor: 328 sq. ft, 2nd floor: 354 sq. ft, 3rd floor: 571 sq. ft
EXCLUDED AREAS: UTILITY: 44 sq. ft, GARAGE: 466 sq. ft, DECK: 535 sq. ft,
FIREPLACE: 11 sq. ft, PORCH: 109 sq. ft, WALLS: 207 sq. ft

Floor Plan Created By V1photos.com. Measurements Deamed Highly Reliable But Not Guaranteed.



Disclaimer: Sizes and Dimensions are Approximate, Actual May Vary.



Jeni VanOrnum
303-475-3880
jenivorealtor@gmail.com
<https://www.jenivosellscolorado.com>



Scan code
for more
property
details

20806 Willowbend Lane, Parker, CO 80138 — Lower Level



TOTAL: 1541 sq. ft

Basement: 288 sq. ft, 1st floor: 328 sq. ft, 2nd floor: 354 sq. ft, 3rd floor: 571 sq. ft
EXCLUDED AREAS: UTILITY: 44 sq. ft, GARAGE: 466 sq. ft, DECK: 535 sq. ft,
FIREPLACE: 11 sq. ft, PORCH: 109 sq. ft, WALLS: 207 sq. ft

Floor Plan Created By V1photos.com. Measurements Deamed Highly Reliable But Not Guaranteed.



Disclaimer: Sizes and Dimensions are Approximate, Actual May Vary.



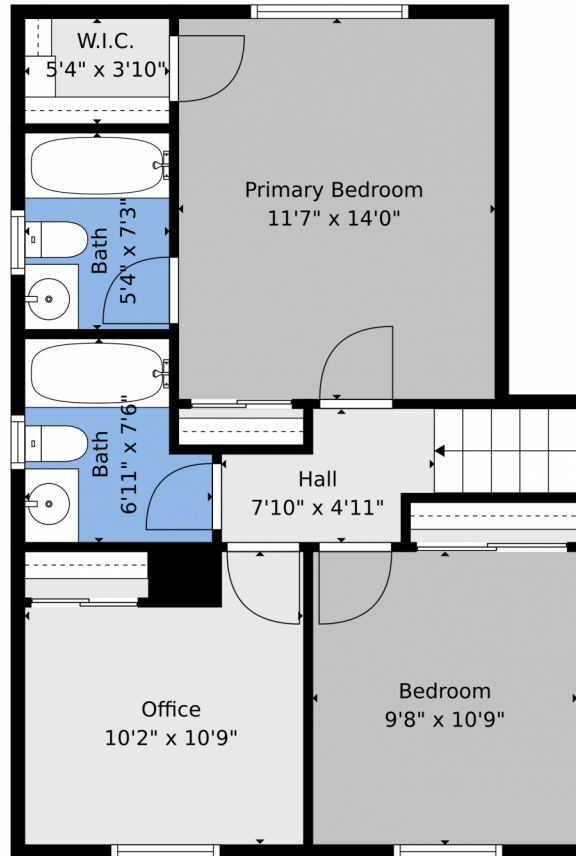
Jeni VanOrnum
303-475-3880
jenivorealtor@gmail.com
<https://www.jenivosellscolorado.com>



Scan code
for more
property
details



20806 Willowbend Lane, Parker, CO 80138 – 2nd Level



TOTAL: 1541 sq. ft

Basement: 288 sq. ft, 1st floor: 328 sq. ft, 2nd floor: 354 sq. ft, 3rd floor: 571 sq. ft
EXCLUDED AREAS: UTILITY: 44 sq. ft, GARAGE: 466 sq. ft, DECK: 535 sq. ft,
FIREPLACE: 11 sq. ft, PORCH: 109 sq. ft, WALLS: 207 sq. ft

Floor Plan Created By V1photos.com. Measurements Deamed Highly Reliable But Not Guaranteed.



Disclaimer: Sizes and Dimensions are Approximate, Actual May Vary.

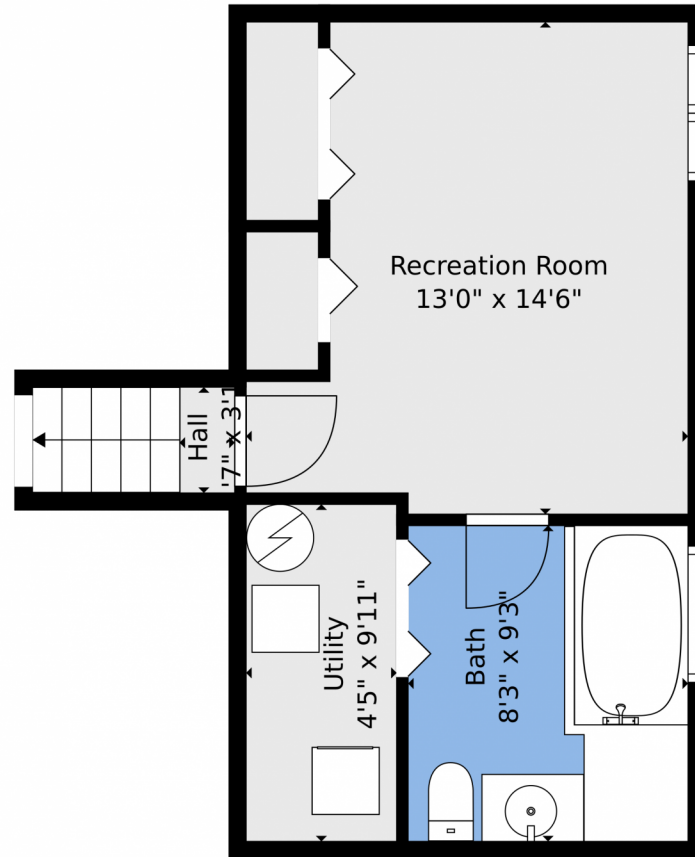


Jeni VanOrnum
303-475-3880
jenivorealtor@gmail.com
<https://www.jenivosellscolorado.com>



Scan code
for more
property
details





TOTAL: 1541 sq. ft

Basement: 288 sq. ft, 1st floor: 328 sq. ft, 2nd floor: 354 sq. ft, 3rd floor: 571 sq. ft
EXCLUDED AREAS: UTILITY: 44 sq. ft, GARAGE: 466 sq. ft, DECK: 535 sq. ft,
FIREPLACE: 11 sq. ft, PORCH: 109 sq. ft, WALLS: 207 sq. ft

Floor Plan Created By V1photos.com. Measurements Deamed Highly Reliable But Not Guaranteed.



Disclaimer: Sizes and Dimensions are Approximate, Actual May Vary.



Jeni VanOrnum
303-475-3880
jenivorealtor@gmail.com
<https://www.jenivosellscolorado.com>



Scan code
for more
property
details



20806 Willowbend Lane, Parker, CO 80138 – All Levels



TOTAL: 1541 sq. ft
Basement: 288 sq. ft, 1st floor: 328 sq. ft, 2nd floor: 354 sq. ft, 3rd floor: 571 sq. ft
EXCLUDED AREAS: UTILITY: 44 sq. ft, GARAGE: 466 sq. ft, DECK: 535 sq. ft,
FIREPLACE: 11 sq. ft, PORCH: 109 sq. ft, WALLS: 207 sq. ft

Floor Plan Created By V1photos.com. Measurements Deamed Highly Reliable But Not Guaranteed.



Disclaimer: Sizes and Dimensions are Approximate, Actual May Vary.



Jeni VanOrnum
303-475-3880
jenivorealtor@gmail.com
<https://www.jenivosellscolorado.com>



Scan code
for more
property
details

