



9288 Rockingham Drive
Peyton, CO 80831



floorplan_single_2



Single Family



3698 SQFT



5 Beds



4 Baths



0.51 Acre



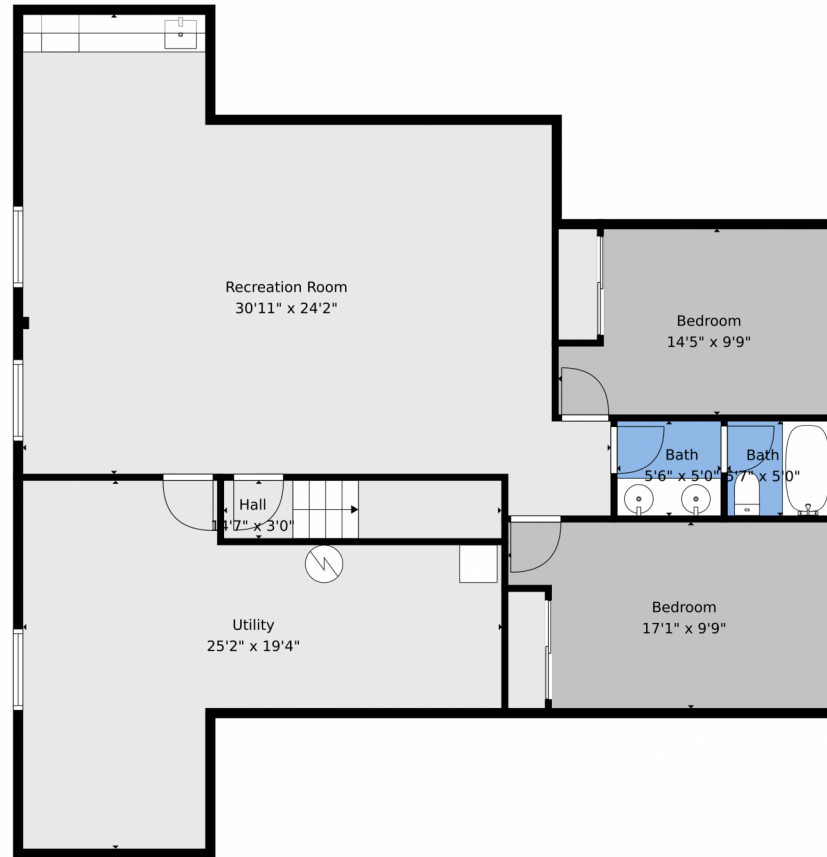
Lance Thibault
719-331-1067
lance.thibault@remax.net
<https://talk2tbo.com>



Scan code
for more
property
details



9288 Rockingham Drive, Peyton, CO 80831 — Lower Level



TOTAL: 3060 sq. ft

Basement 2: 1030 sq. ft, Basement 1: 0 sq. ft, 1st floor: 1449 sq. ft, 2nd floor: 581 sq. ft
EXCLUDED AREAS: UTILITY: 322 sq. ft, STORAGE: 242 sq. ft, GARAGE: 812 sq. ft,
PATIO: 630 sq. ft, PORCH: 105 sq. ft, FIREPLACE: 13 sq. ft,
OPEN TO BELOW: 152 sq. ft, WALLS: 339 sq. ft

Floor Plan Created By V1photos.com. Measurements Deamed Highly Reliable But Not Guaranteed.

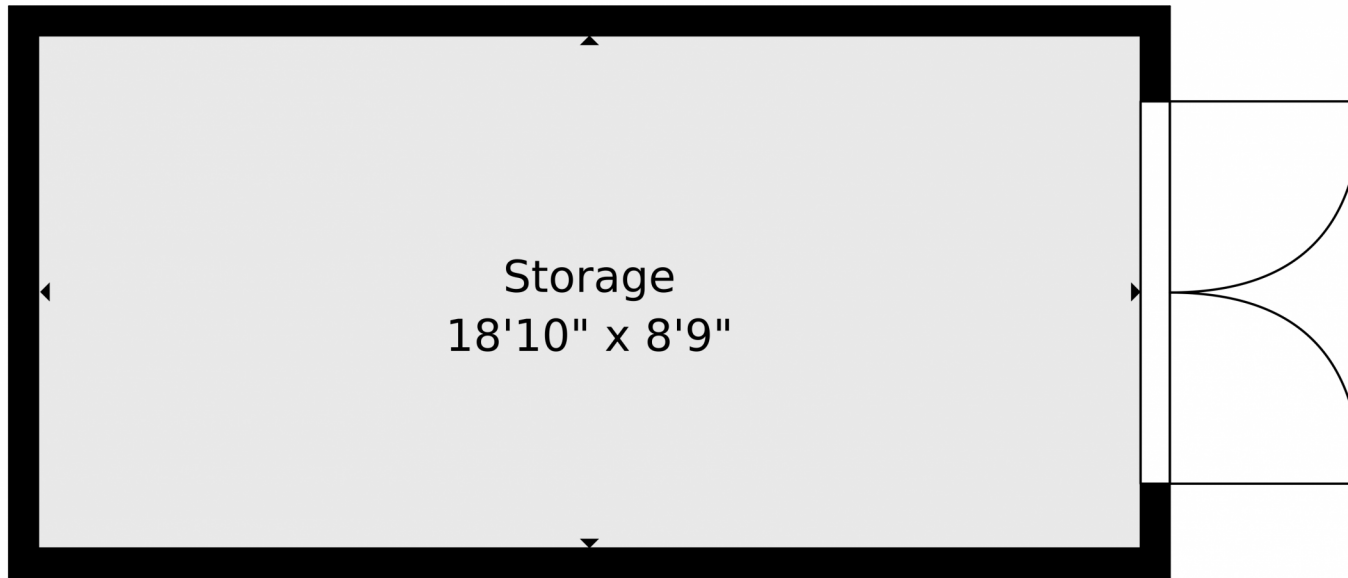


Disclaimer: Sizes and Dimensions are Approximate, Actual May Vary.



Lance Thibault
719-331-1067
lance.thibault@remax.net
<https://talk2tbo.com>





TOTAL: 3060 sq. ft
Basement 2: 1030 sq. ft, Basement 1: 0 sq. ft, 1st floor: 1449 sq. ft, 2nd floor: 581 sq. ft
EXCLUDED AREAS: UTILITY: 322 sq. ft, STORAGE: 242 sq. ft, GARAGE: 812 sq. ft,
PATIO: 630 sq. ft, PORCH: 105 sq. ft, FIREPLACE: 13 sq. ft,
OPEN TO BELOW: 152 sq. ft, WALLS: 339 sq. ft

Floor Plan Created By V1photos.com. Measurements Deamed Highly Reliable But Not Guaranteed.



Disclaimer: Sizes and Dimensions are Approximate, Actual May Vary.



Lance Thibault
719-331-1067
lance.thibault@remax.net
<https://talk2tbo.com>



9288 Rockingham Drive, Peyton, CO 80831 – Main Level



TOTAL: 3060 sq. ft

Basement 2: 1030 sq. ft, Basement 1: 0 sq. ft, 1st floor: 1449 sq. ft, 2nd floor: 581 sq. ft
EXCLUDED AREAS: UTILITY: 322 sq. ft, STORAGE: 242 sq. ft, GARAGE: 812 sq. ft,
PATIO: 630 sq. ft, PORCH: 105 sq. ft, FIREPLACE: 13 sq. ft,
OPEN TO BELOW: 152 sq. ft, WALLS: 339 sq. ft

Floor Plan Created By V1photos.com. Measurements Deamed Highly Reliable But Not Guaranteed.

Disclaimer: Sizes and Dimensions are Approximate, Actual May Vary.



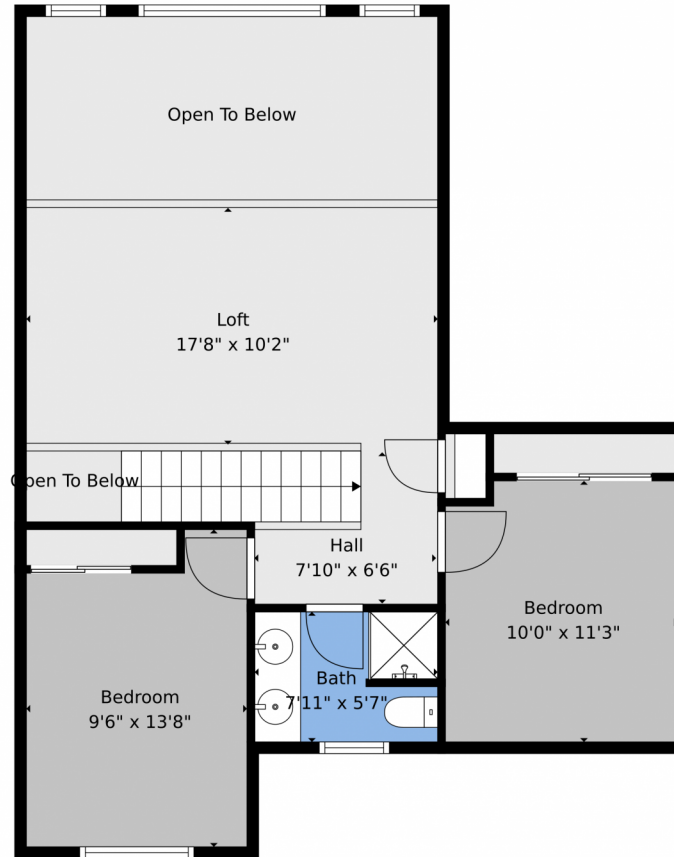
Lance Thibault
719-331-1067
lance.thibault@remax.net
<https://talk2tbo.com>



Scan code
for more
property
details



9288 Rockingham Drive, Peyton, CO 80831 — Upper Level



TOTAL: 3060 sq. ft

Basement 2: 1030 sq. ft, Basement 1: 0 sq. ft, 1st floor: 1449 sq. ft, 2nd floor: 581 sq. ft
EXCLUDED AREAS: UTILITY: 322 sq. ft, STORAGE: 242 sq. ft, GARAGE: 812 sq. ft,
PATIO: 630 sq. ft, PORCH: 105 sq. ft, FIREPLACE: 13 sq. ft,
OPEN TO BELOW: 152 sq. ft, WALLS: 339 sq. ft

Floor Plan Created By V1photos.com. Measurements Deamed Highly Reliable But Not Guaranteed.



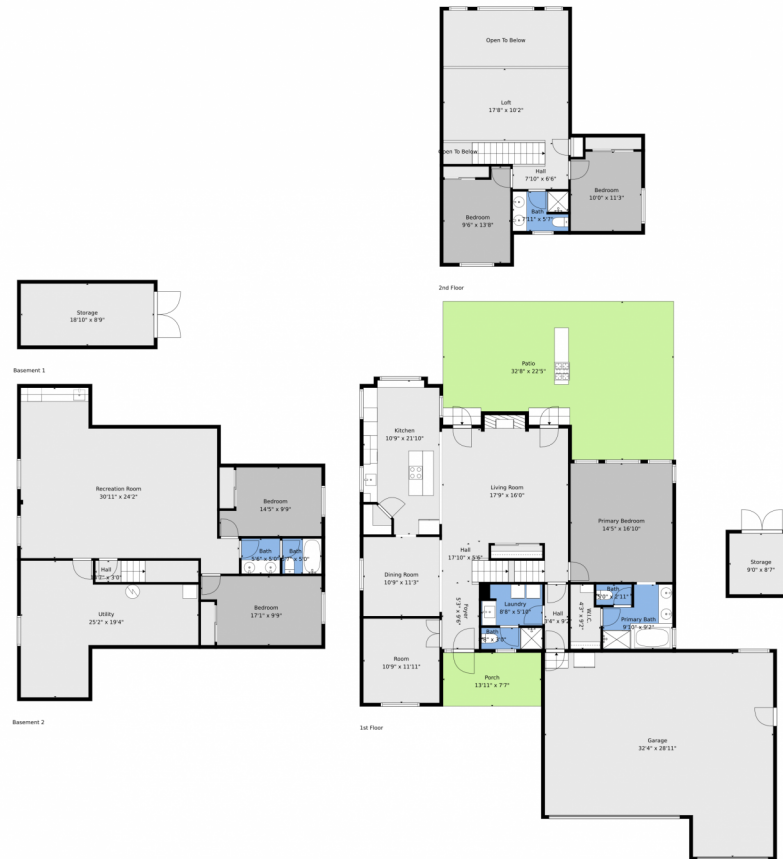
Disclaimer: Sizes and Dimensions are Approximate, Actual May Vary.



Lance Thibault
719-331-1067
lance.thibault@remax.net
<https://talk2tbo.com>



9288 Rockingham Drive, Peyton, CO 80831 – All Levels



TOTAL: 3060 sq. ft
Basement 2: 1030 sq. ft, Basement 1: 0 sq. ft, 1st floor: 1449 sq. ft, 2nd floor: 581 sq. ft
EXCLUDED AREAS: UTILITY: 322 sq. ft, STORAGE: 242 sq. ft, GARAGE: 812 sq. ft,
PATIO: 630 sq. ft, PORCH: 105 sq. ft, FIREPLACE: 13 sq. ft,
OPEN TO BELOW: 152 sq. ft, WALLS: 339 sq. ft

Floor Plan Created By V1photos.com. Measurements Deamed Highly Reliable But Not Guaranteed.



Disclaimer: Sizes and Dimensions are Approximate, Actual May Vary.



Lance Thibault
719-331-1067
lance.thibault@remax.net
<https://talk2tbo.com>

