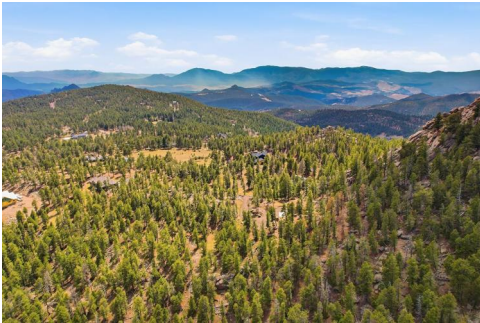
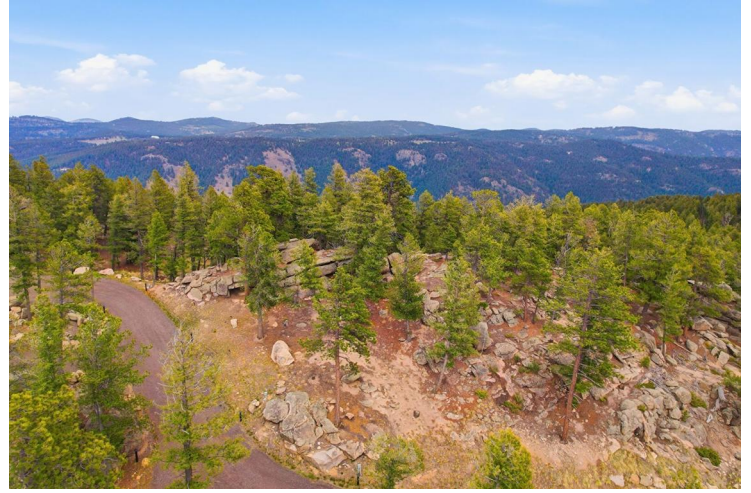
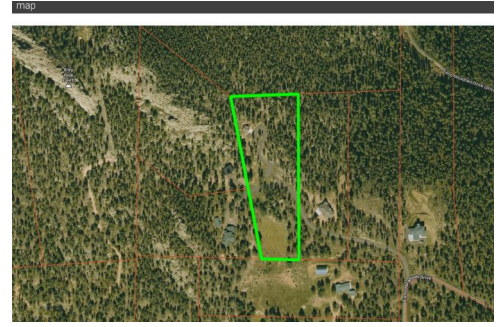
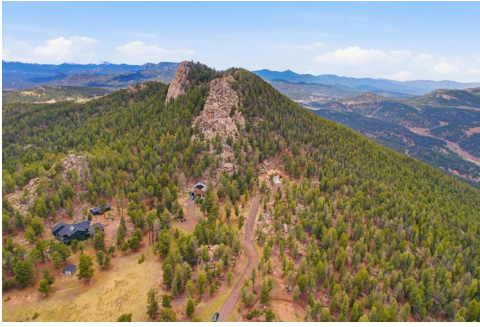




24073 Peak Drive  
 Conifer, CO 80433  
 COMMUNITY: Piano Meadows

MLS # 3101185  
 PRICE \$895,000



Vacant Land



1052 SQFT



1 Bed



1/1 Baths



2 Car



5.28 Acre

## PROPERTY DETAILS

This rare 5-acre lot at 9,100 feet offers stunning sunrises, sunsets, and views of Denver and surrounding mountains. It features rock outcroppings, an open field, and borders 99 acres of shared open space. The flat site is ready for your custom home, with utilities including 200-amp electrical service, water, a septic system for five bedrooms, natural gas, phone, and internet. Architectural plans for a 4,000+ sqft home are available. A finished coach house/garage provides temporary living space during construction. Fire mitigation and tree removal are done, and wildlife sightings include elk and deer. Conifer offers dining, shopping, and easy access to Denver, hiking, and ski resorts. For more details, see MLS #3755740.

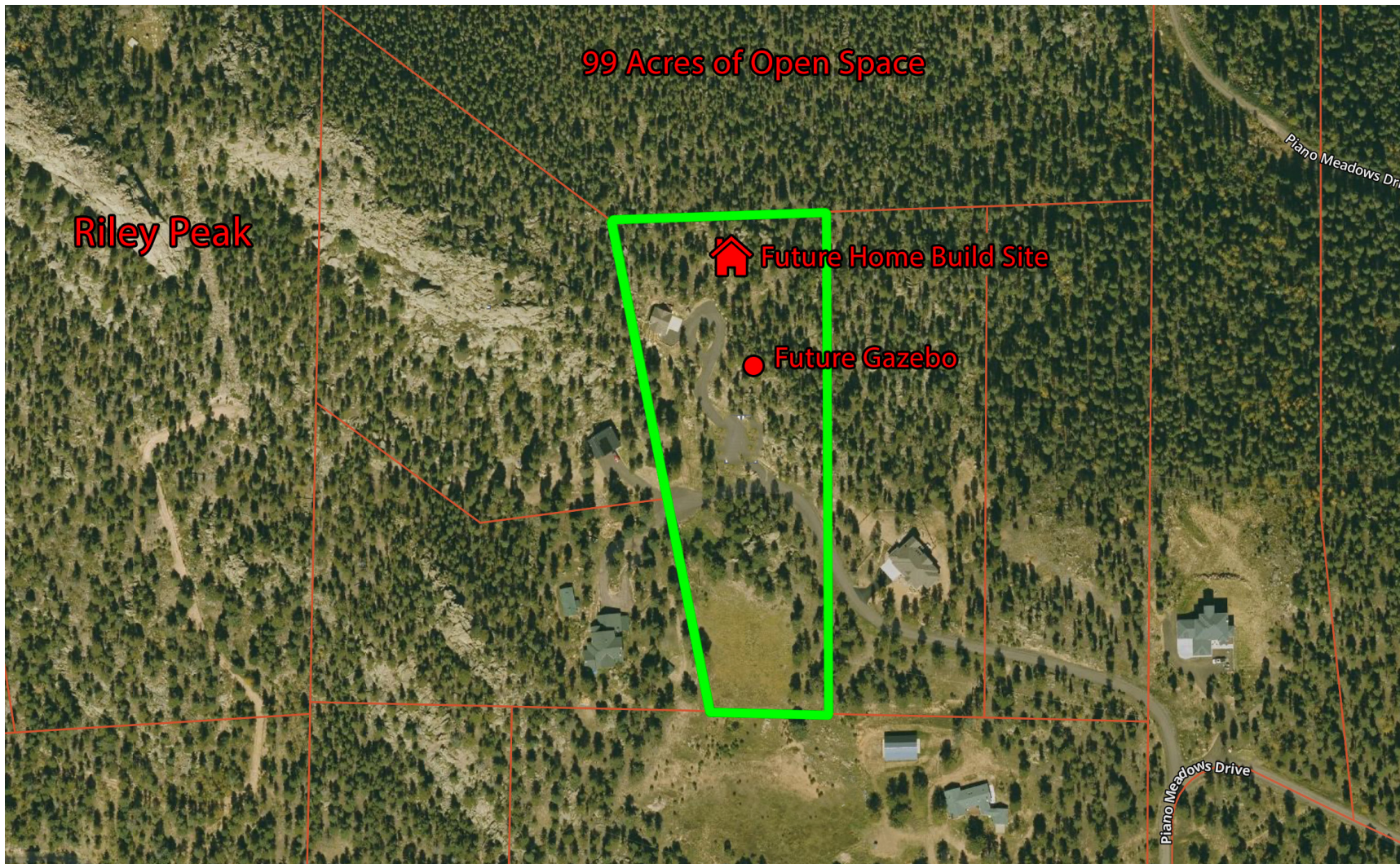


**Toby Hillman**  
 720-261-6064  
 hillmanrealestateservices@hotmail.com  
 http://www.realtortobyhillman.com



Scan code  
 for more  
 property  
 details





Disclaimer: Sizes and Dimensions are Approximate, Actual May Vary.



**Toby Hillman**  
720-261-6064  
hillmanrealestateservices@hotmail.com  
<http://www.realtortobyhillman.com>

