

1520 Red Poppy Way  
Brighton, CO 80601  
COMMUNITY: Indigo Trails

PRICE \$495,000



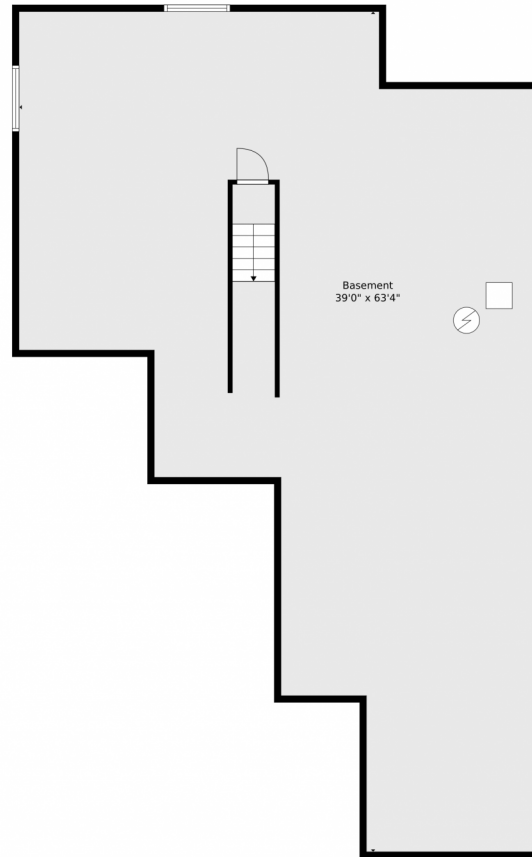
 Single Family  3,472 SQFT  2 Beds  2 Baths  3 Car  0.15 Acre

## PROPERTY DETAILS

This beautifully crafted single-family home in Indigo Trails, Brighton, Colorado, offers a unique opportunity for buyers. With 3,472 square feet, it features 2 bedrooms and 2 full bathrooms, blending comfort and sophistication. The open floor plan is perfect for relaxation and entertaining, complemented by a dedicated office space for remote work. High-quality finishes include a spacious living room with a stone-tiled fireplace, a gourmet kitchen with stainless steel appliances, and a dining area with bay windows. Outdoor living features a covered patio and deck, ideal for gatherings, while the landscaped yard enhances curb appeal. The HOA manages lawn maintenance, and residents enjoy access to parks and amenities. This home is a rare find in a vibrant neighborhood.

Lisa Lovely  
303-880-0599  
lmlovely1@msn.com





**TOTAL: 1692 sq. ft**  
Basement: 0 sq. ft, 1st floor: 1692 sq. ft  
EXCLUDED AREAS: BASEMENT: 1672 sq. ft, GARAGE: 513 sq. ft, PORCH: 113 sq. ft,  
COVERED DECK: 117 sq. ft, PATIO: 70 sq. ft, WALLS: 237 sq. ft

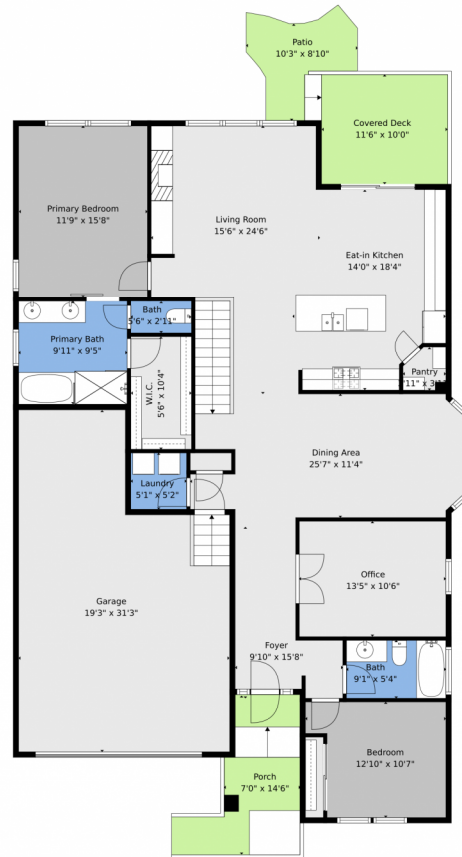
Floor Plan Created By V1photos.com. Measurements Deamed Highly Reliable But Not Guaranteed.



Disclaimer: Sizes and Dimensions are Approximate, Actual May Vary.

Lisa Lovely  
303-880-0599  
lmlovely1@msn.com





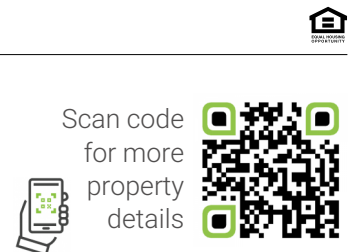
**TOTAL: 1692 sq. ft**  
Basement: 0 sq. ft, 1st floor: 1692 sq. ft  
EXCLUDED AREAS: BASEMENT: 1672 sq. ft, GARAGE: 513 sq. ft, PORCH: 113 sq. ft,  
COVERED DECK: 117 sq. ft, PATIO: 70 sq. ft, WALLS: 237 sq. ft

Floor Plan Created By V1photos.com. Measurements Deamed Highly Reliable But Not Guaranteed.



Disclaimer: Sizes and Dimensions are Approximate, Actual May Vary.

Lisa Lovely  
303-880-0599  
lmlovely1@msn.com



# 1520 Red Poppy Way, Brighton, CO 80601 — floorplan\_all\_0



**TOTAL: 1692 sq. ft**  
Basement: 0 sq. ft, 1st floor: 1692 sq. ft  
EXCLUDED AREAS: BASEMENT: 1672 sq. ft, GARAGE: 513 sq. ft, PORCH: 113 sq. ft,  
COVERED DECK: 117 sq. ft, PATIO: 70 sq. ft, WALLS: 237 sq. ft

Floor Plan Created By V1photos.com. Measurements Deamed Highly Reliable But Not Guaranteed.



Disclaimer: Sizes and Dimensions are Approximate, Actual May Vary.

Lisa Lovely  
303-880-0599  
lmlvely1@msn.com

