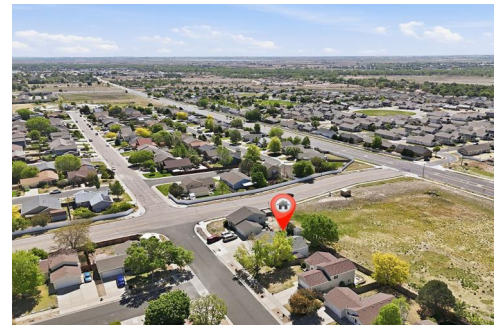





2906 Hawk Drive
Evans, CO 80620

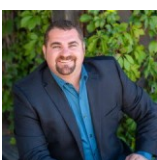


 Single Family

 2080 SQFT

 4 Beds

 2 Baths



Brad Inhulsen
970-584-4144
brad@yournocorealtor.com



Scan code
for more
property
details

2906 Hawk Drive, Evans, CO 80620 – Main



TOTAL: 1934 sq. ft
Basement: 905 sq. ft, 1st floor: 1029 sq. ft
EXCLUDED AREAS: UTILITY: 50 sq. ft, GARAGE: 438 sq. ft, STORAGE: 82 sq. ft,
PORCH: 130 sq. ft, COVERED PATIO: 354 sq. ft, WALLS: 182 sq. ft

Floor Plan Created By V1photos.com. Measurements Deamed Highly Reliable But Not Guaranteed.



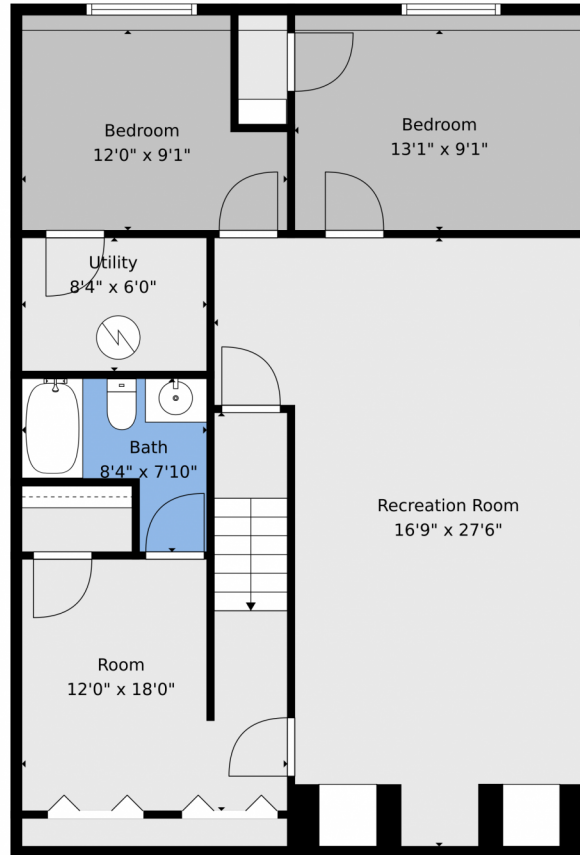
Disclaimer: Sizes and Dimensions are Approximate, Actual May Vary.



Brad Inhulsen
970-584-4144
brad@yournocorealtor.com



2906 Hawk Drive, Evans, CO 80620 — Basement



TOTAL: 1934 sq. ft
Basement: 905 sq. ft, 1st floor: 1029 sq. ft
EXCLUDED AREAS: UTILITY: 50 sq. ft, GARAGE: 438 sq. ft, STORAGE: 82 sq. ft,
PORCH: 130 sq. ft, COVERED PATIO: 354 sq. ft, WALLS: 182 sq. ft

Floor Plan Created By V1photos.com. Measurements Deamed Highly Reliable But Not Guaranteed.



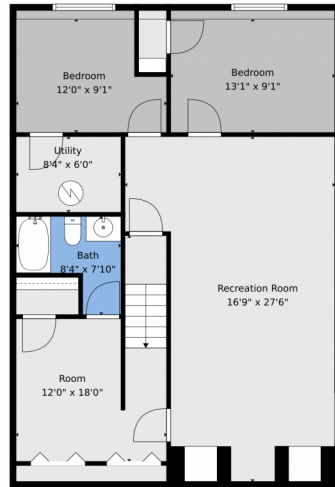
Disclaimer: Sizes and Dimensions are Approximate, Actual May Vary.



Brad Inhulsen
970-584-4144
brad@yournocorealtor.com



2906 Hawk Drive, Evans, CO 80620 – All Levels



Basement



1st Floor

TOTAL: 1934 sq. ft
Basement: 905 sq. ft, 1st floor: 1029 sq. ft,
EXCLUDED AREAS: UTILITY: 50 sq. ft, GARAGE: 438 sq. ft, STORAGE: 82 sq. ft,
PORCH: 130 sq. ft, COVERED PATIO: 354 sq. ft, WALLS: 182 sq. ft

Floor Plan Created By V1photos.com. Measurements Deamed Highly Reliable But Not Guaranteed.



Disclaimer: Sizes and Dimensions are Approximate, Actual May Vary.



Brad Inhulsen
970-584-4144
brad@yournocorealtor.com



Scan code
for more
property
details

