




floorplan_single.2



 Single Family

 2347 SQFT

 4 Beds

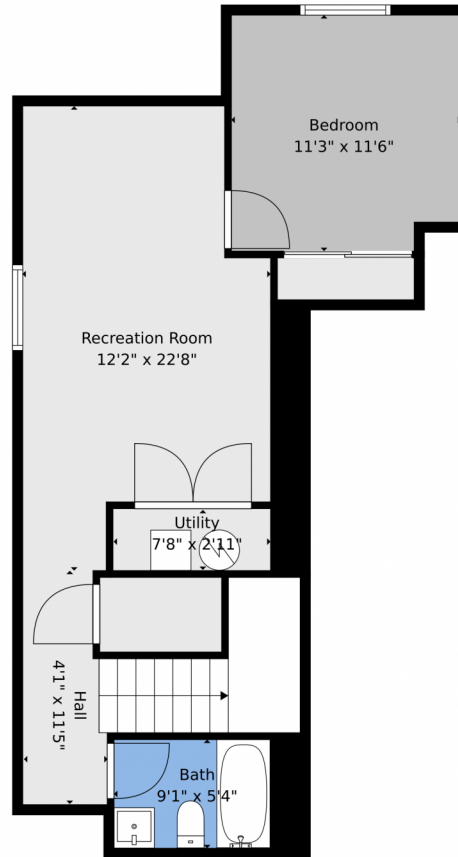
 3/1 Baths



Taylor Haas
 303-665-7368
 taylorh@coloradorpm.com
<https://www.coloradorpm.com/available-rental-properties-denver>



10363 Sundial Shadow Drive, Colorado Springs, CO 80924 – Basement



TOTAL: 2219 sq. ft

Basement: 570 sq. ft, 1st floor: 651 sq. ft, 2nd floor: 998 sq. ft
EXCLUDED AREAS: UTILITY: 28 sq. ft, PORCH: 41 sq. ft, PATIO: 87 sq. ft,
GARAGE: 527 sq. ft, OPEN TO BELOW: 42 sq. ft, WALLS: 226 sq. ft

Floor Plan Created By V1photos.com. Measurements Deamed Highly Reliable But Not Guaranteed.



Disclaimer: Sizes and Dimensions are Approximate, Actual May Vary.



Taylor Haas

303-665-7368

taylorh@coloradorpm.com

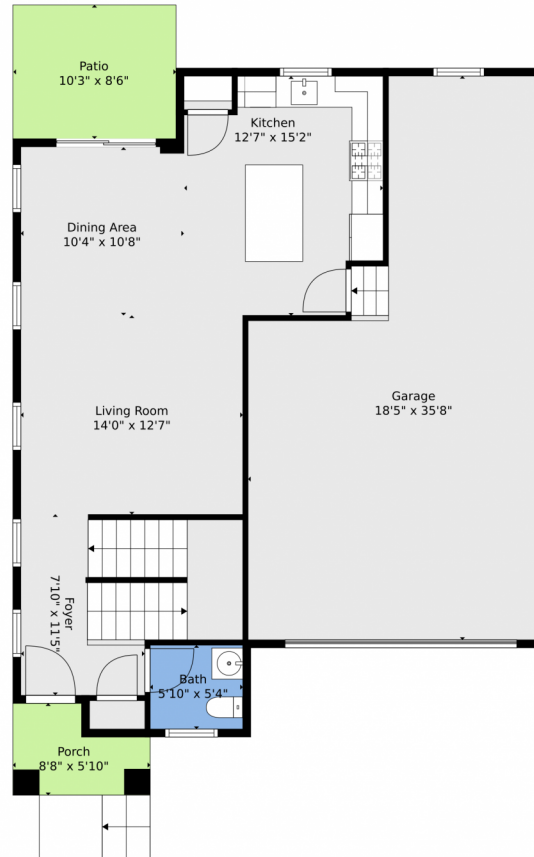
<https://www.coloradorpm.com/available-rental-properties-denver>



Scan code
for more
property
details



10363 Sundial Shadow Drive, Colorado Springs, CO 80924 – Main



TOTAL: 2219 sq. ft
Basement: 570 sq. ft, 1st floor: 651 sq. ft, 2nd floor: 998 sq. ft
EXCLUDED AREAS: UTILITY: 28 sq. ft, PORCH: 41 sq. ft, PATIO: 87 sq. ft,
GARAGE: 527 sq. ft, OPEN TO BELOW: 42 sq. ft, WALLS: 226 sq. ft

Floor Plan Created By V1photos.com. Measurements Deamed Highly Reliable But Not Guaranteed.



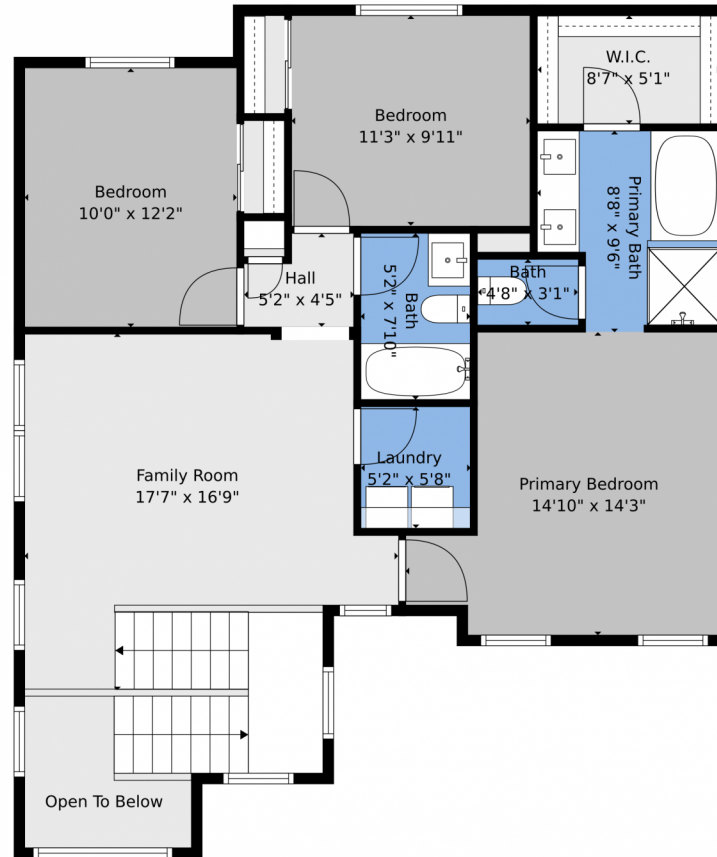
Disclaimer: Sizes and Dimensions are Approximate, Actual May Vary.



Taylor Haas
303-665-7368
taylorh@coloradorpm.com
<https://www.coloradorpm.com/available-rental-properties-denver>



10363 Sundial Shadow Drive, Colorado Springs, CO 80924 – 2nd Level



TOTAL: 2219 sq. ft
Basement: 570 sq. ft, 1st floor: 651 sq. ft, 2nd floor: 998 sq. ft
EXCLUDED AREAS: UTILITY: 28 sq. ft, PORCH: 41 sq. ft, PATIO: 87 sq. ft,
GARAGE: 527 sq. ft, OPEN TO BELOW: 42 sq. ft, WALLS: 226 sq. ft

Floor Plan Created By V1photos.com. Measurements Deamed Highly Reliable But Not Guaranteed.



Disclaimer: Sizes and Dimensions are Approximate, Actual May Vary.



Taylor Haas
303-665-7368
taylorh@coloradorpm.com
<https://www.coloradorpm.com/available-rental-properties-denver>



Scan code
for more
property
details



10363 Sundial Shadow Drive, Colorado Springs, CO 80924 – All Levels



TOTAL: 2219 sq. ft
Basement: 570 sq. ft, 1st floor: 651 sq. ft, 2nd floor: 998 sq. ft
EXCLUDED AREAS: UTILITY: 28 sq. ft, PORCH: 41 sq. ft, PATIO: 87 sq. ft,
GARAGE: 527 sq. ft, OPEN TO BELOW: 42 sq. ft, WALLS: 226 sq. ft

Floor Plan Created By V1photos.com. Measurements Deamed Highly Reliable But Not Guaranteed.



Disclaimer: Sizes and Dimensions are Approximate, Actual May Vary.



Taylor Haas

303-665-7368

taylorh@coloradorpm.com

<https://www.coloradorpm.com/available-rental-properties-denver>



Scan code
for more
property
details

