



10685 West 47th Avenue
Wheat Ridge, CO 80033
COMMUNITY: Fruitdale



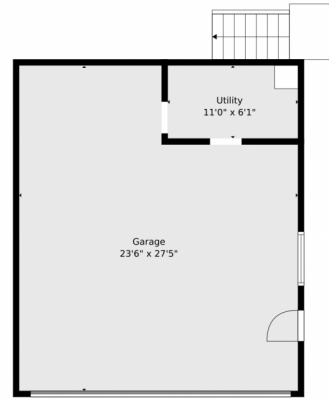
 Single Family  1372 SQFT  4 Beds  2 Baths  2 Car  0.22 Acre



Amanda Lam
303-647-7474
amanda@dakotamgmt.com



10685 West 47th Avenue, Wheat Ridge, CO 80033 – Main



TOTAL: 1267 sq. ft
1st floor: 1267 sq. ft, 2nd floor: 0 sq. ft
EXCLUDED AREAS: GARAGE: 570 sq. ft, UTILITY: 68 sq. ft, PORCH: 66 sq. ft,
ROOM: 585 sq. ft, DECK: 20 sq. ft, WALLS: 195 sq. ft

Floor Plan Created By V1photos.com. Measurements Deamed Highly Reliable But Not Guaranteed.



Disclaimer: Sizes and Dimensions are Approximate, Actual May Vary.

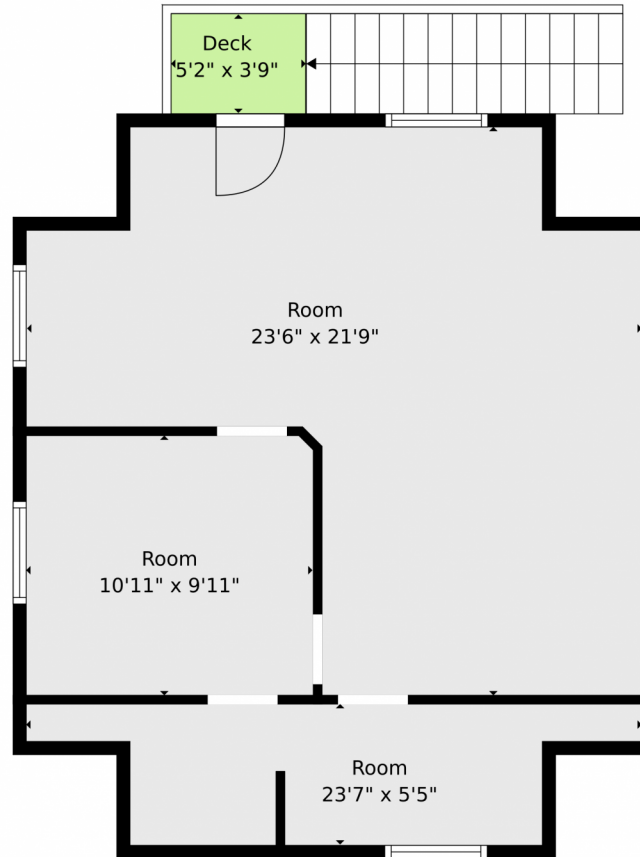


Amanda Lam
303-647-7474
amanda@dakotamgmt.com



Scan code
for more
property
details

10685 West 47th Avenue, Wheat Ridge, CO 80033 – 2nd Level



TOTAL: 1267 sq. ft
1st floor: 1267 sq. ft, 2nd floor: 0 sq. ft
EXCLUDED AREAS: GARAGE: 570 sq. ft, UTILITY: 68 sq. ft, PORCH: 66 sq. ft,
ROOM: 585 sq. ft, DECK: 20 sq. ft, WALLS: 195 sq. ft

Floor Plan Created By V1photos.com. Measurements Deamed Highly Reliable But Not Guaranteed.



Disclaimer: Sizes and Dimensions are Approximate, Actual May Vary.

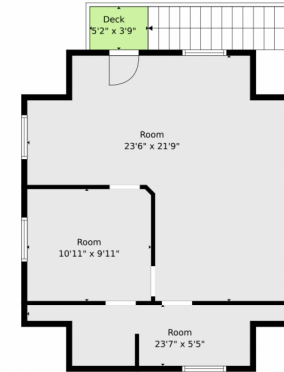
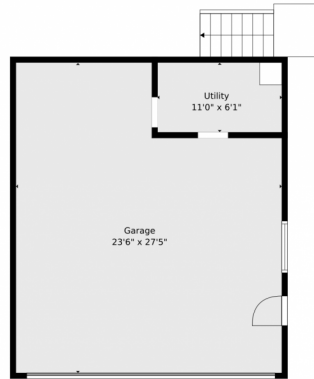


Amanda Lam
303-647-7474
amanda@dakotamgmt.com



Scan code
for more
property
details

10685 West 47th Avenue, Wheat Ridge, CO 80033 – All Levels



2nd Floor



1st Floor

TOTAL: 1267 sq. ft
1st floor: 1267 sq. ft, 2nd floor: 0 sq. ft
EXCLUDED AREAS: GARAGE: 570 sq. ft, UTILITY: 68 sq. ft, PORCH: 66 sq. ft,
ROOM: 585 sq. ft, DECK: 20 sq. ft, WALLS: 195 sq. ft

Floor Plan Created By V1photos.com. Measurements Deamed Highly Reliable But Not Guaranteed.



Disclaimer: Sizes and Dimensions are Approximate, Actual May Vary.



Amanda Lam
303-647-7474
amanda@dakotamgmt.com

