

449 Corona Street
Denver, CO 80218
COMMUNITY: Alamo Placita



Single Family



958 SQFT



2 Beds



1 Baths



1 Car



0.07 Acre



Julio Quezada
720-882-3970
julio@thepristineproperties.com



Scan code
for more
property
details





TOTAL: 869 sq. ft
Basement: 0 sq. ft, 1st floor: 869 sq. ft
EXCLUDED AREAS: UTILITY: 104 sq. ft, GARAGE: 222 sq. ft, PORCH: 50 sq. ft,
PATIO: 226 sq. ft, FIREPLACE: 4 sq. ft, WALLS: 127 sq. ft

Floor Plan Created By V1photos.com. Measurements Deamed Highly Reliable But Not Guaranteed.

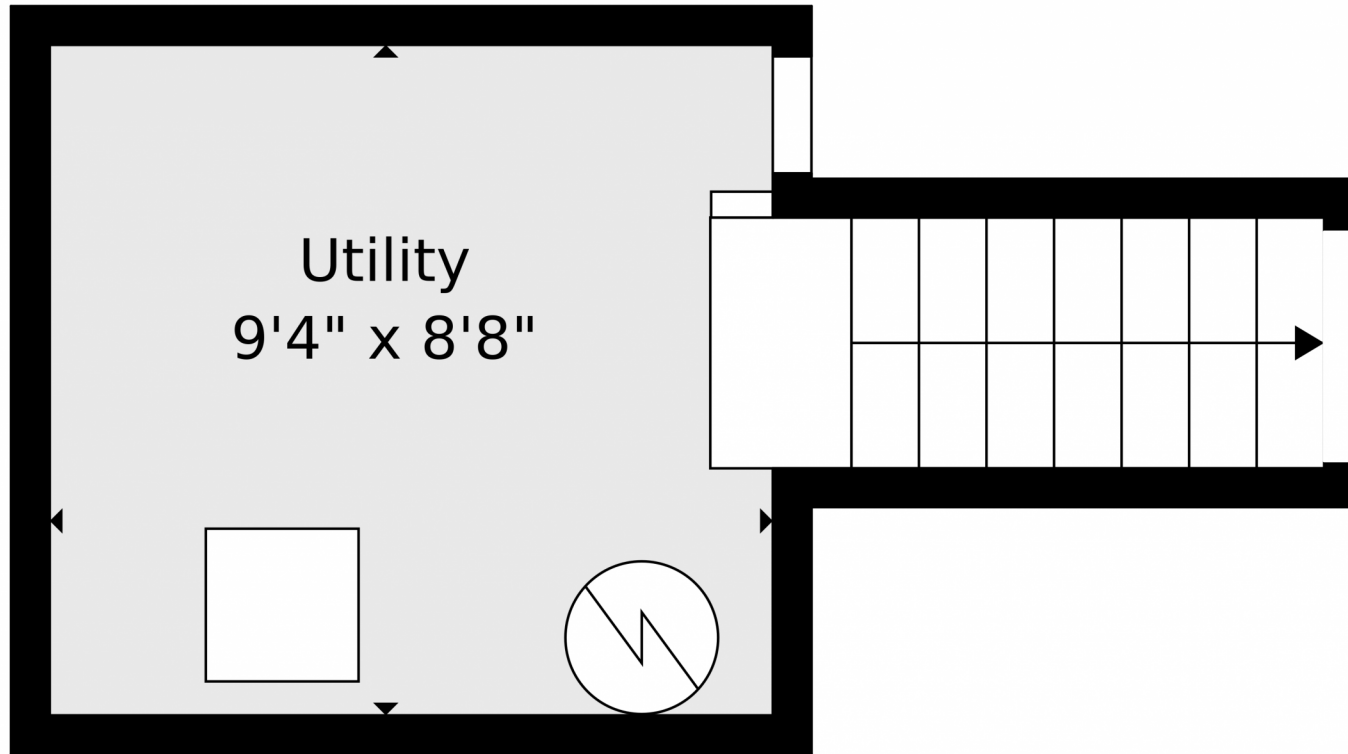


Disclaimer: Sizes and Dimensions are Approximate, Actual May Vary.



Julio Quezada
720-882-3970
julio@thepristineproperties.com





TOTAL: 869 sq. ft
Basement: 0 sq. ft, 1st floor: 869 sq. ft
EXCLUDED AREAS: UTILITY: 104 sq. ft, GARAGE: 222 sq. ft, PORCH: 50 sq. ft,
PATIO: 226 sq. ft, FIREPLACE: 4 sq. ft, WALLS: 127 sq. ft

Floor Plan Created By V1photos.com. Measurements Deamed Highly Reliable But Not Guaranteed.



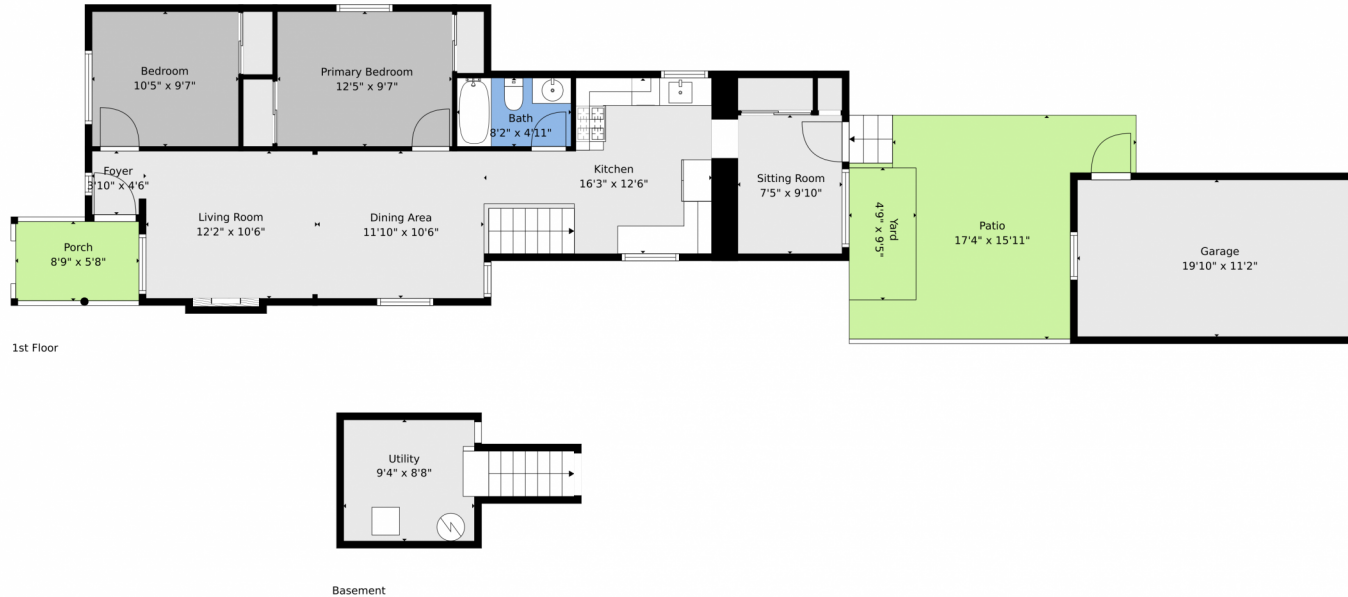
Disclaimer: Sizes and Dimensions are Approximate, Actual May Vary.



Julio Quezada
720-882-3970
julio@thepristineproperties.com



449 Corona Street, Denver, CO 80218 – All Levels



TOTAL: 869 sq. ft
Basement: 0 sq. ft, 1st floor: 869 sq. ft
EXCLUDED AREAS: UTILITY: 104 sq. ft, GARAGE: 222 sq. ft, PORCH: 50 sq. ft,
PATIO: 226 sq. ft, FIREPLACE: 4 sq. ft, WALLS: 127 sq. ft

Floor Plan Created By V1photos.com. Measurements Deamed Highly Reliable But Not Guaranteed.



Disclaimer: Sizes and Dimensions are Approximate, Actual May Vary.



Julio Quezada
720-882-3970
julio@thepristineproperties.com



Scan code
for more
property
details

