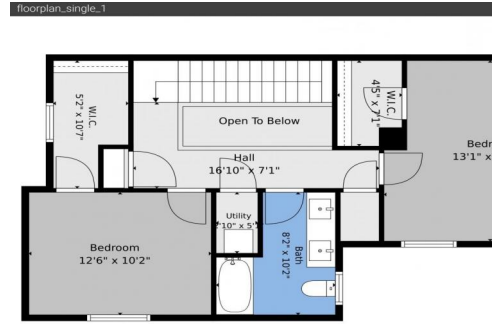




135 Mayflower St
 Colorado Springs, CO 80905
 COMMUNITY: Gold Hill Mesa



Single Family



1704 SQFT



3 Beds



2/1 Baths



2 Car



0.05 Acre



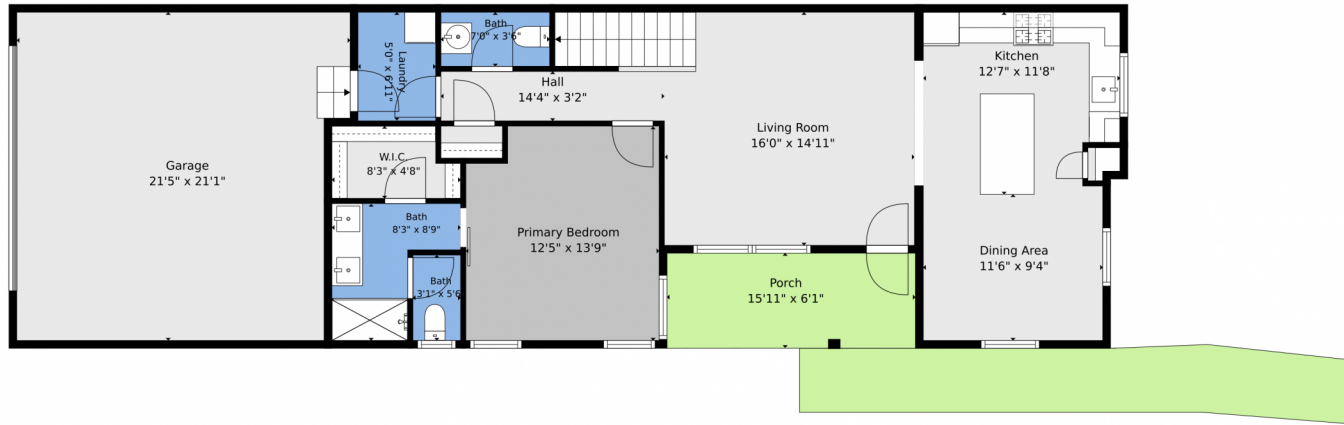
Erin Handlin
 719-651-9683
 erin.handlin.realtor@gmail.com
<https://erinhandlin.fathomrealty.com>



Scan code
 for more
 property
 details



135 Mayflower St, Colorado Springs, CO 80905 – Main



TOTAL: 1573 sq. ft
1st floor: 937 sq. ft, 2nd floor: 636 sq. ft
EXCLUDED AREAS: GARAGE: 426 sq. ft, PORCH: 97 sq. ft, OPEN TO BELOW: 34 sq. ft,
WALLS: 142 sq. ft

Floor Plan Created By V1photos.com. Measurements Deamed Highly Reliable But Not Guaranteed.



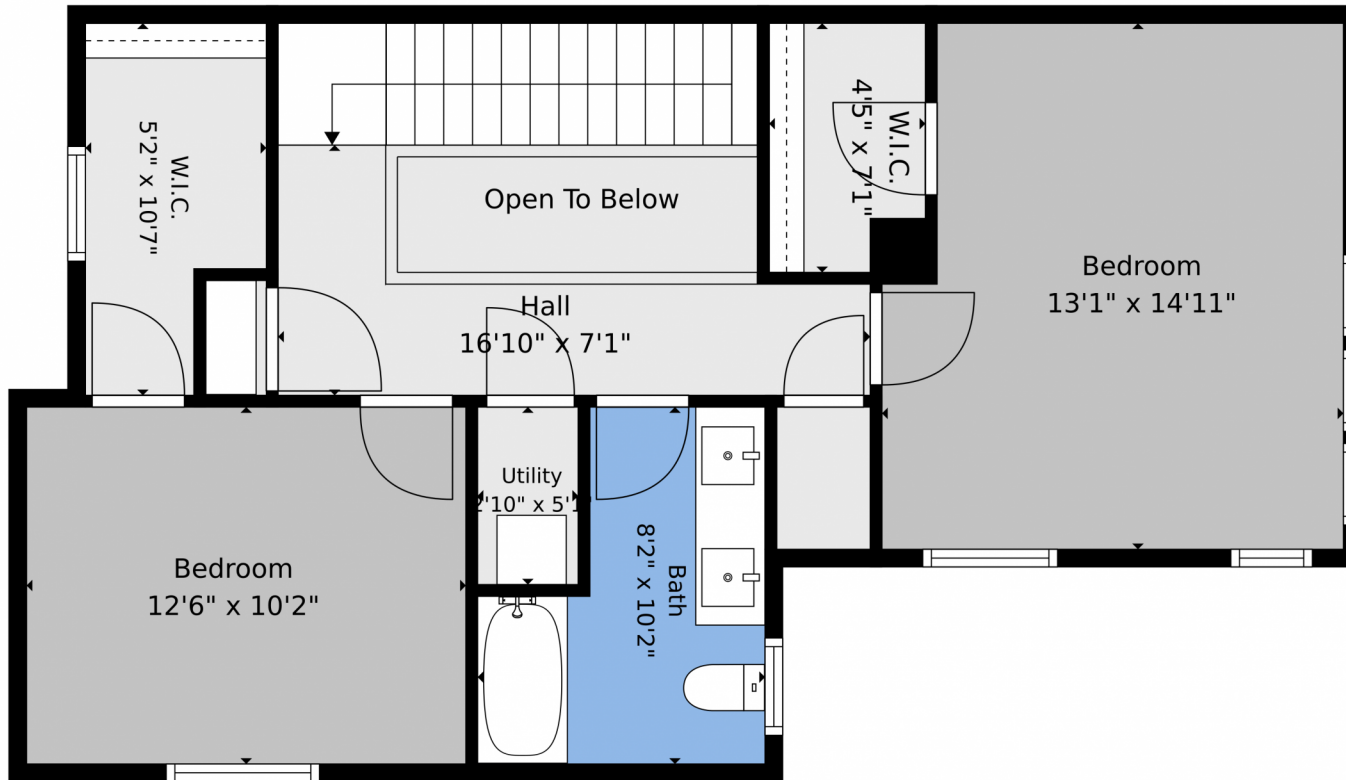
Disclaimer: Sizes and Dimensions are Approximate, Actual May Vary.



Erin Handlin
719-651-9683
erin.handlin.realtor@gmail.com
<https://erinhandlin.fathomrealty.com>



135 Mayflower St, Colorado Springs, CO 80905 – 2nd Level



TOTAL: 1573 sq. ft
1st floor: 937 sq. ft, 2nd floor: 636 sq. ft
EXCLUDED AREAS: GARAGE: 426 sq. ft, PORCH: 97 sq. ft, OPEN TO BELOW: 34 sq. ft,
WALLS: 142 sq. ft

Floor Plan Created By V1photos.com. Measurements Deamed Highly Reliable But Not Guaranteed.

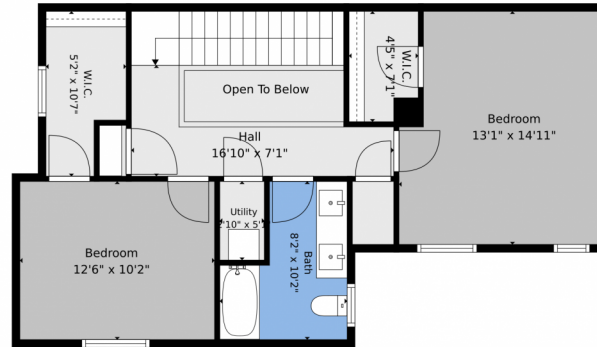
Disclaimer: Sizes and Dimensions are Approximate, Actual May Vary.



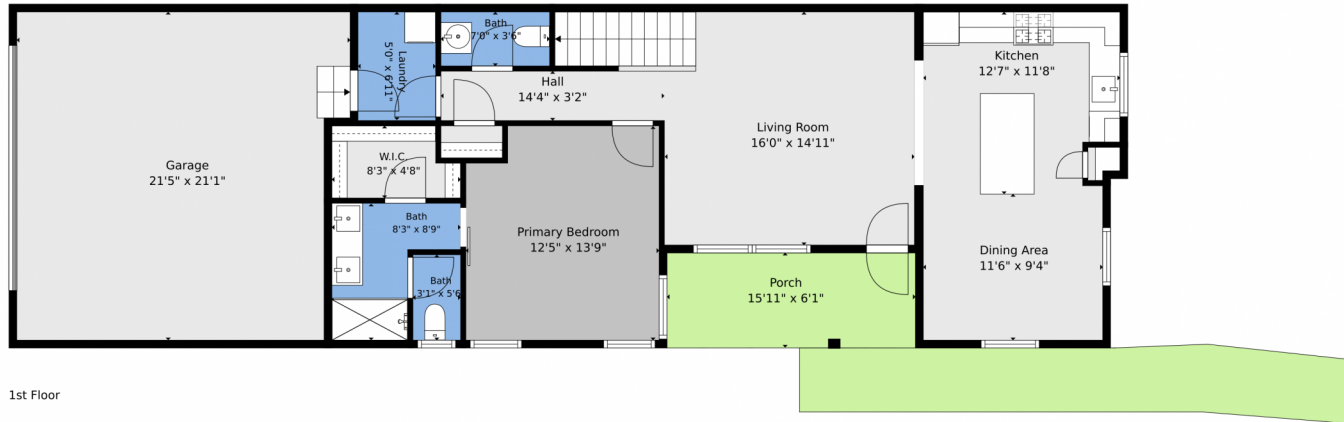
Erin Handlin
719-651-9683
erin.handlin.realtor@gmail.com
<https://erinhandlin.fathomrealty.com>



135 Mayflower St, Colorado Springs, CO 80905 – All Levels



2nd Floor



1st Floor

TOTAL: 1573 sq. ft
1st floor: 937 sq. ft, 2nd floor: 636 sq. ft
EXCLUDED AREAS: GARAGE: 426 sq. ft, PORCH: 97 sq. ft, OPEN TO BELOW: 34 sq. ft,
WALLS: 142 sq. ft

Floor Plan Created By V1photos.com. Measurements Deamed Highly Reliable But Not Guaranteed.



Disclaimer: Sizes and Dimensions are Approximate, Actual May Vary.



Erin Handlin
719-651-9683
erin.handlin.realtor@gmail.com
<https://erinhandlin.fathomrealty.com>



Scan code
for more
property
details

