



1471 Nemrick Place
 Castle Rock, CO 80109
 COMMUNITY: Red Hawk

MLS # 3419505
 PRICE \$409,900



Townhouse 1571 SQFT 3 Beds 2/1 Baths 2 Car

PROPERTY DETAILS

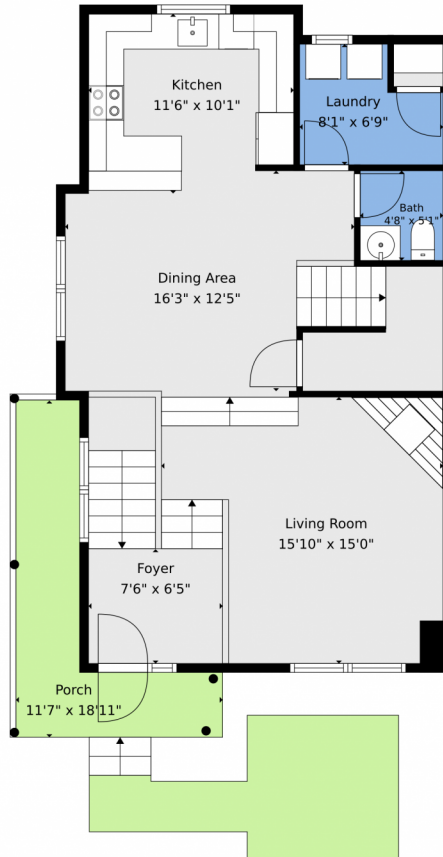
Rare chance to own a spacious 3-bedroom, 2.5-bath end-unit townhome in Castle Rock's Red Hawk community! This home faces a lovely park and combines space, location, and value. Recently updated with new carpet, paint, and A/C, it's move-in ready while allowing for future personalization. A walk-in crawlspace offers exceptional storage. The primary suite includes an ensuite bath and two walk-in closets. Additional features: private garage, small front yard, lower taxes, and a pet-friendly setting with professional management. HOA dues cover water, sewer, trash, and maintenance. This home is priced below similar units, making it a great value. Enjoy easy access to I-25, parks, dining, shopping, and good schools.



Milissa Everly
 303-915-3434
 milissa@homesbyshift.com



1471 Nemrick Place, Castle Rock, CO 80109 – Main



TOTAL: 1472 sq. ft
Basement: 36 sq. ft, 1st floor: 730 sq. ft, 2nd floor: 706 sq. ft
EXCLUDED AREAS: ROOM: 263 sq. ft, GARAGE: 386 sq. ft, PORCH: 200 sq. ft,
WALLS: 153 sq. ft

Floor Plan Created By V1photos.com. Measurements Deamed Highly Reliable But Not Guaranteed.



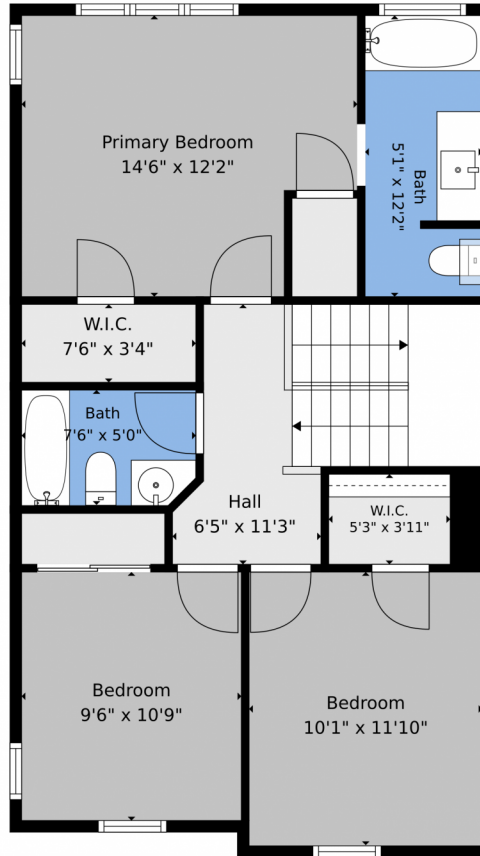
Disclaimer: Sizes and Dimensions are Approximate, Actual May Vary.



Milissa Everly
303-915-3434
milissa@homesbyshift.com



1471 Nemrick Place, Castle Rock, CO 80109 – 2nd Level



TOTAL: 1472 sq. ft
Basement: 36 sq. ft, 1st floor: 730 sq. ft, 2nd floor: 706 sq. ft
EXCLUDED AREAS: ROOM: 263 sq. ft, GARAGE: 386 sq. ft, PORCH: 200 sq. ft,
WALLS: 153 sq. ft

Floor Plan Created By V1photos.com. Measurements Deamed Highly Reliable But Not Guaranteed.



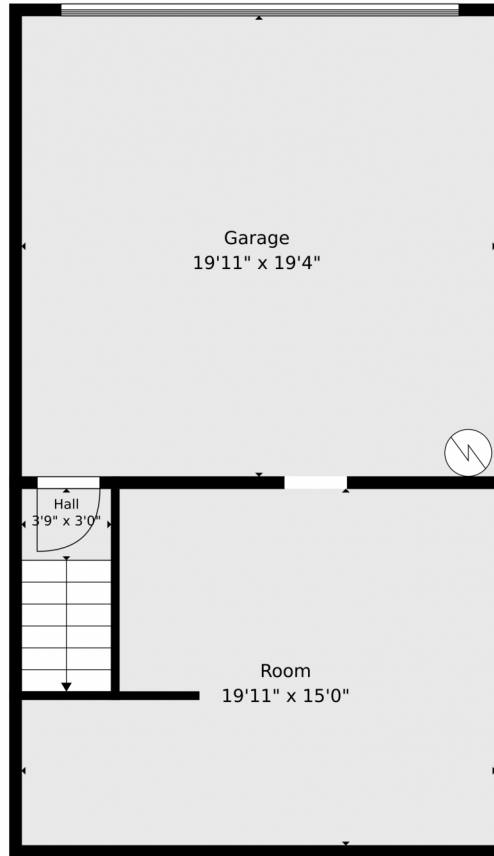
Disclaimer: Sizes and Dimensions are Approximate, Actual May Vary.



Milissa Everly
303-915-3434
milissa@homesbyshift.com



1471 Nemrick Place, Castle Rock, CO 80109 – Lower Level



TOTAL: 1472 sq. ft
Basement: 36 sq. ft, 1st floor: 730 sq. ft, 2nd floor: 706 sq. ft
EXCLUDED AREAS: ROOM: 263 sq. ft, GARAGE: 386 sq. ft, PORCH: 200 sq. ft,
WALLS: 153 sq. ft

Floor Plan Created By V1photos.com. Measurements Deamed Highly Reliable But Not Guaranteed.



Disclaimer: Sizes and Dimensions are Approximate, Actual May Vary.



Milissa Everly
303-915-3434
milissa@homesbyshift.com



1471 Nemrick Place, Castle Rock, CO 80109 – All Levels



Basement

1st Floor

2nd Floor

TOTAL: 1472 sq. ft
Basement: 36 sq. ft, 1st floor: 730 sq. ft, 2nd floor: 706 sq. ft
EXCLUDED AREAS: ROOM: 263 sq. ft, GARAGE: 386 sq. ft, PORCH: 200 sq. ft,
WALLS: 153 sq. ft

Floor Plan Created By V1photos.com. Measurements Deamed Highly Reliable But Not Guaranteed.



Disclaimer: Sizes and Dimensions are Approximate, Actual May Vary.



Milissa Everly
303-915-3434
milissa@homesbyshift.com



Scan code
for more
property
details

